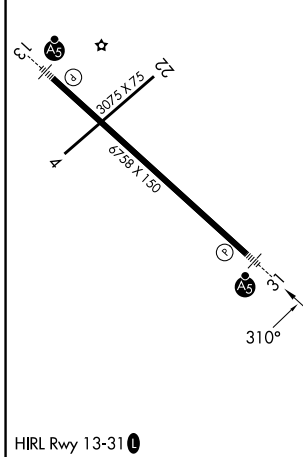
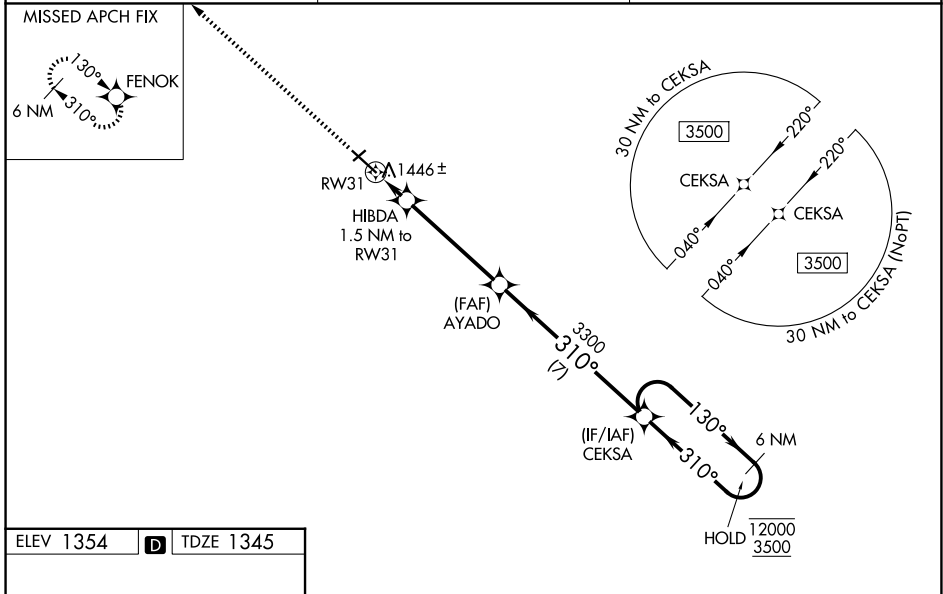


WAAS CH 65722 W31A	APP CRS 310°	Rwy Ldg TDZE 1345 Apt Elev 1354
--	------------------------	---

RNAV (GPS) RWY 31

RANGE RGNL (HIB)

RNP APCH - GPS.		MALSR 	MISSED APPROACH: Climb to 3500 direct FENOK and hold.
Baro-VNAV and VDP NA when using Eveleth altimeter setting. For uncompensated Baro-VNAV systems, LNAV/VNAV NA below -17°C or above 54°C. When local altimeter setting not received, use Eveleth altimeter setting and increase LPV DA to 1581 feet; increase LNAV/VNAV DA to 1643 feet; increase all MDAs 40 feet; and Circling visibility Cat C ¼ SM. For inop ALS, increase LNAV/VNAV all Cats visibility to ¾ SM, LNAV Cat C/D to 1 SM. For inop ALS when using Eveleth altimeter setting, increase LNAV/VNAV all Cats visibility to ¾ SM.			
ASOS 126.425	DULUTH APP CON 125.45 233.7	UNICOM 123.0 (CTAF) 0	



ELEV 1354	D	TDZE 1345																									
3500 FENOK VGSI and RNAV glidepath not coincident (VGSI Angle 2.90/TCH 62). HIBDA 1.5 NM to RW31 RW31 1 NM to RW31 AYADO 3300 CEKSA 6 NM Holding Pattern 130° → 12000 ← 310° 3500 GP 3.00° TCH 55	1 NM 0.5 4.5 NM 7 NM	12000 3500																									
<table border="1"> <thead> <tr> <th>CATEGORY</th> <th>A</th> <th>B</th> <th>C</th> <th>D</th> </tr> </thead> <tbody> <tr> <td>LPV DA</td> <td></td> <td>1545-½</td> <td>200 (200-½)</td> <td></td> </tr> <tr> <td>LNAV/VNAV DA</td> <td></td> <td>1607-½</td> <td>262 (300-½)</td> <td></td> </tr> <tr> <td>LNAV MDA</td> <td>1700-½</td> <td>355 (400-½)</td> <td>1700-⅝</td> <td>355 (400-⅝)</td> </tr> <tr> <td>CIRCLING</td> <td>1900-1</td> <td>546 (600-1)</td> <td>1920-1½ 566 (600-1½)</td> <td>1980-2 626 (700-2)</td> </tr> </tbody> </table>	CATEGORY	A	B	C	D	LPV DA		1545-½	200 (200-½)		LNAV/VNAV DA		1607-½	262 (300-½)		LNAV MDA	1700-½	355 (400-½)	1700-⅝	355 (400-⅝)	CIRCLING	1900-1	546 (600-1)	1920-1½ 566 (600-1½)	1980-2 626 (700-2)		
CATEGORY	A	B	C	D																							
LPV DA		1545-½	200 (200-½)																								
LNAV/VNAV DA		1607-½	262 (300-½)																								
LNAV MDA	1700-½	355 (400-½)	1700-⅝	355 (400-⅝)																							
CIRCLING	1900-1	546 (600-1)	1920-1½ 566 (600-1½)	1980-2 626 (700-2)																							

NC-1, 11 JUN 2026 to 09 JUL 2026

NC-1, 11 JUN 2026 to 09 JUL 2026