

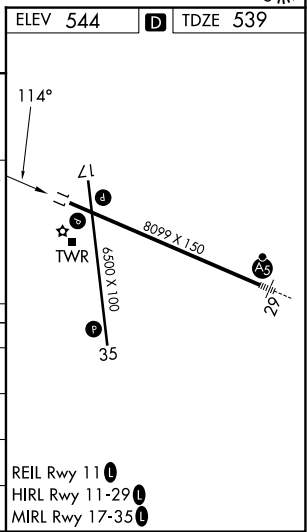
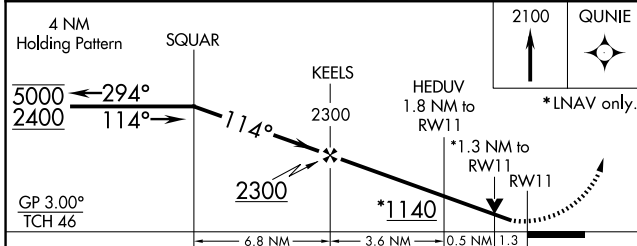
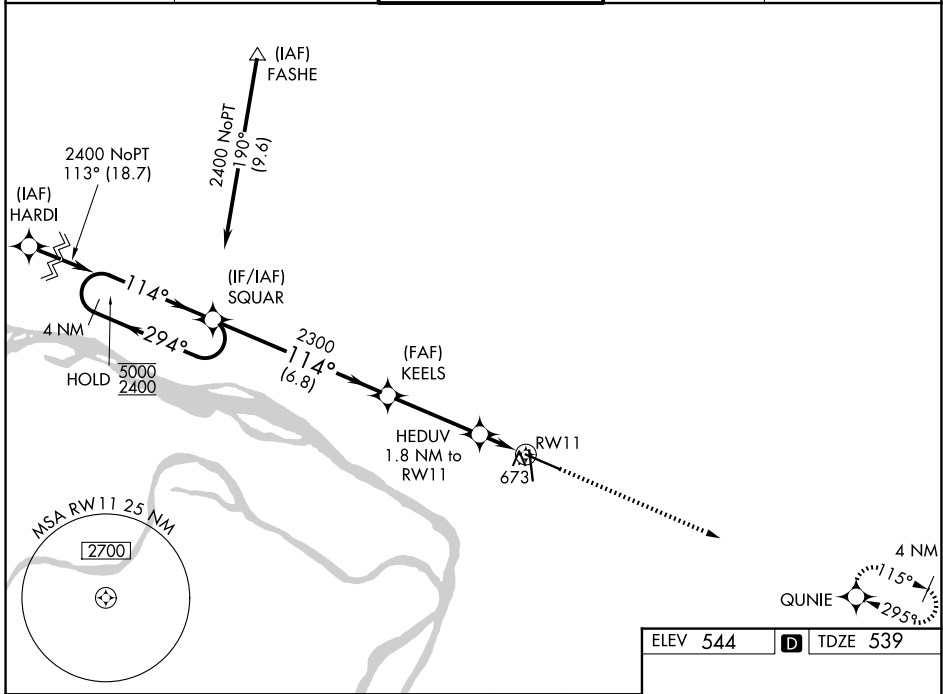
WAAS CH 90417 W11A	APP CRS 114°	Rwy Ldg TDZE Apt Elev	8099 539 544
--	------------------------	-----------------------------	---

RNAV (GPS) RWY 11

ST LOUIS RGNL (A.L.N)

RNP APCH.		MISSED APPROACH: Climb to 2100 direct QUNIE and hold.
<p>▽ Rwy 11 helicopter visibility reduction below ¼ SM NA. ▲ For uncompensated Baro-VNAV systems, LNAV/VNAV NA below -16°C or above 54°C.</p>		

ATIS 128.0	ST LOUIS APP CON 124.2 353.9	REGIONAL TOWER* 126.0 (CTAF) 0 239.0	GND CON 120.2	UNICOM 122.95
----------------------	--	--	-------------------------	-------------------------



CATEGORY	A	B	C	D
LPV DA	794-7/8		255 (300-7/8)	
LNAV/ VNAV DA	881-1 1/8		342 (400-1 1/8)	
LNAV MDA	980-1	441 (500-1)	980-1 3/8	441 (500-1 3/8)
CIRCLING	1000-1	456 (500-1)	1160-1 3/4	1200-2
			616 (700-1 3/4)	656 (700-2)

EC-3, 11 JUN 2026 to 09 JUL 2026

EC-3, 11 JUN 2026 to 09 JUL 2026