

WAAS CH 86537 W11A	APP CRS 116°	Rwy Ldg TDZE 718 Apt Elev 722
--	------------------------	---

RNAV (GPS) RWY 11

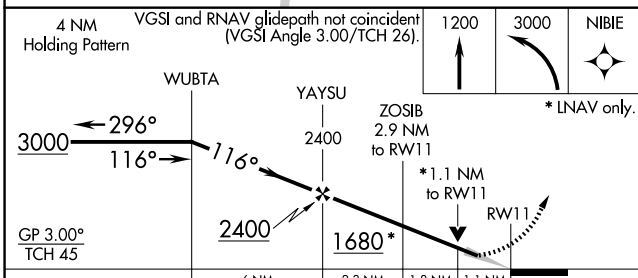
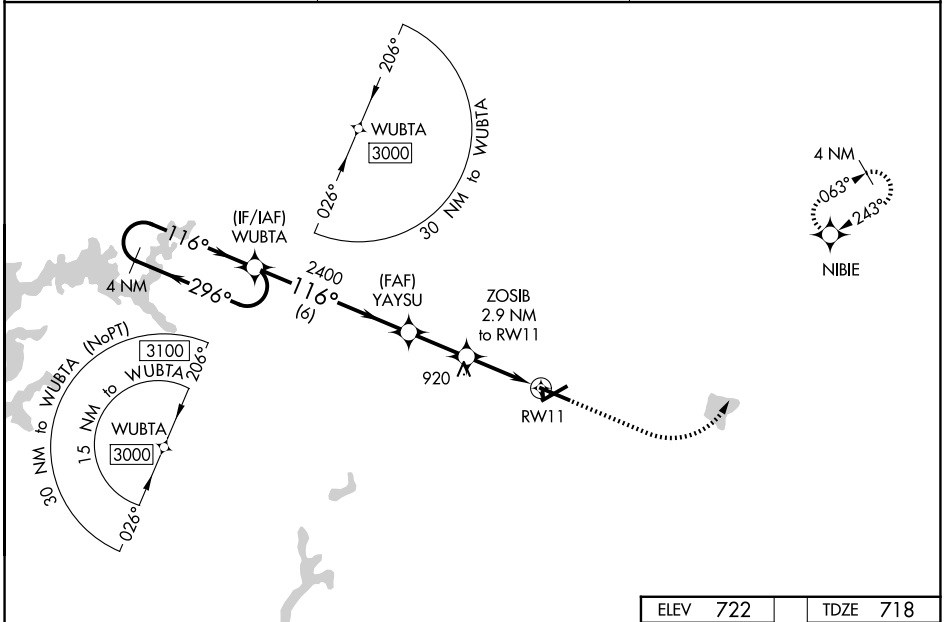
COLES COUNTY MEML (MTO)

RNP APCH.

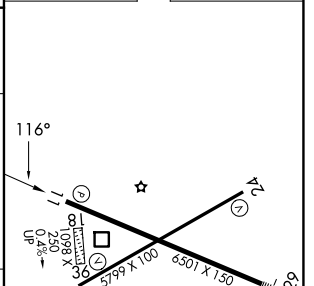
▼ When local altimeter setting not received, use Champaign/Urbana altimeter setting and increase all DA 82 feet, increase all MDA 100 feet, and increase LPV all Cats visibility $\frac{1}{8}$ mile, LNAV/VNAV all Cats visibility $\frac{3}{8}$ mile, LNAV Cats C and D and Circling Cat C visibility $\frac{1}{4}$ mile, and Circling D visibility $\frac{1}{2}$ mile. For uncompensated Baro-VNAV systems, LNAV/VNAV NA below -19°C or above 54°C . Baro-VNAV and VDP NA when using Champaign/Urbana altimeter setting. Circling NA to Rwy 18 and 36.

MISSED APPROACH: Climb to 1200 then climbing left turn to 3000 direct NIBIE and hold.

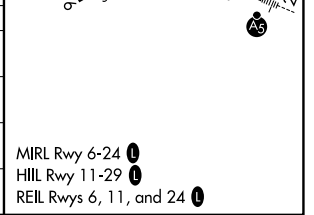
ASOS 118.475	CHAMPAIGN APP CON ★ 132.85 290,225	UNICOM 122.7 (CTAF) 0
------------------------	--	---------------------------------



ELEV 722	TDZE 718
----------	----------



CATEGORY	A	B	C	D
LPV DA	918- $\frac{3}{4}$ 200 (200- $\frac{3}{4}$)			
LNAV/VNAV DA	1175-1 $\frac{5}{8}$ 457 (500-1 $\frac{5}{8}$)			
LNAV MDA	1120-1	402 (400-1)	1120-1 $\frac{1}{8}$	402 (400-1 $\frac{1}{8}$)
CIRCLING	1160-1 438 (500-1)	1180-1 458 (500-1)	1240-1 $\frac{1}{2}$ 518 (600-1 $\frac{1}{2}$)	1380-2 658 (700-2)



EC-3, 11 JUN 2026 to 09 JUL 2026

EC-3, 11 JUN 2026 to 09 JUL 2026