

FORT RUCKER, ALABAMA

COPTER RNAV (GPS) RWY 17

[USA]

HANCHEY AHP (FORT RUCKER) (KHEY)

APCH CRS	Rwy Idg	476
176°	TDZE	318
	Arpt Elev	318

RNP APCH - GPS

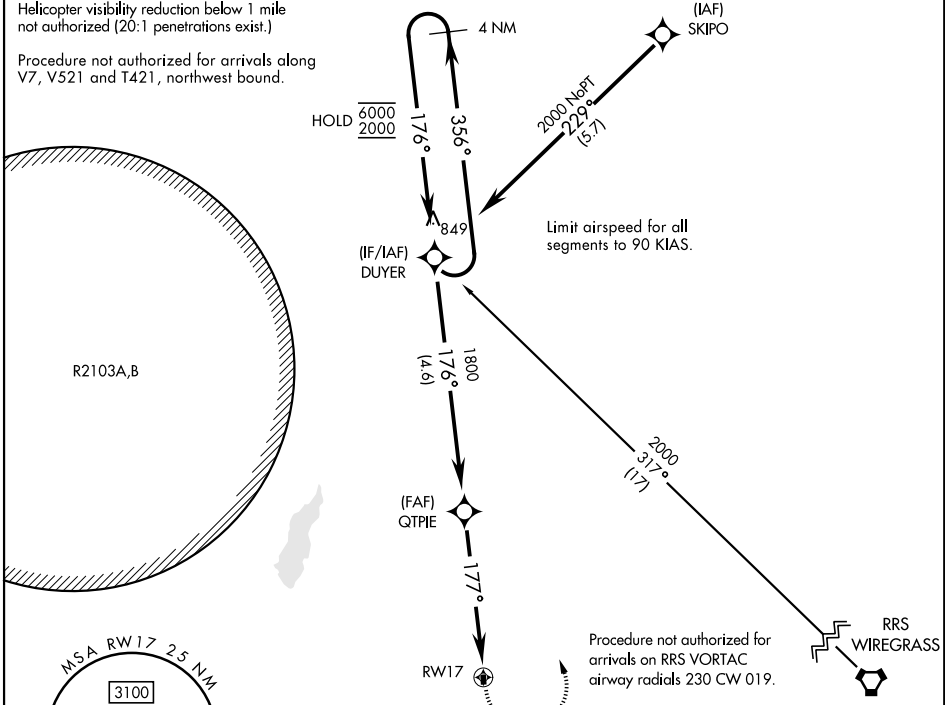
▼ Use CAIRNS altimeter setting, when not received, use LOWE altimeter setting.
▲ Procedure not authorized at night.

MISSED APPROACH: Climbing left turn to 2000 direct DUYER and hold.

ATIS ★	CAIRNS APP CON	TOWER ★	GND CON	CAIRNS CLNC DEL
141.375	125.4 327.125	140.5 387.85	142.55 225.575	118.075 380.1

Helicopter visibility reduction below 1 mile not authorized (20:1 penetrations exist.)

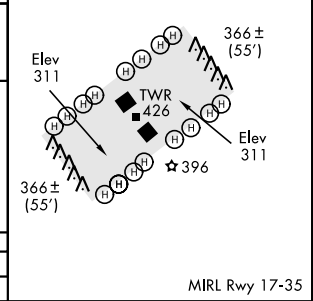
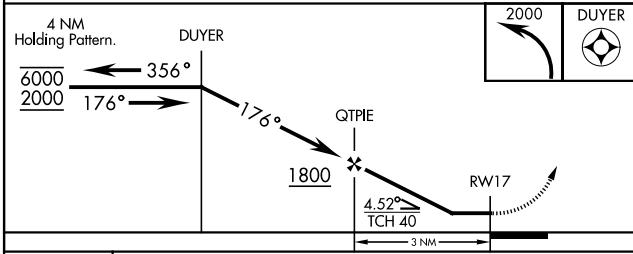
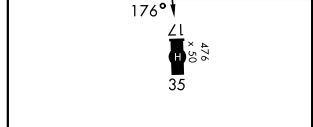
Procedure not authorized for arrivals along V7, V521 and T421, northwest bound.



SE-4, 11 JUN 2026 to 09 JUL 2026

SE-4, 11 JUN 2026 to 09 JUL 2026

ELEV	318	TDZE	318
------	-----	------	-----



CATEGORY	COPTER		
LNAV MDA	900-1	582	(600-1)

FORT RUCKER, ALABAMA

31° 21' N-85° 39' W

HANCHEY AHP (FORT RUCKER) (KHEY)

Amdt 3 10JUL25

COPTER RNAV (GPS) RWY 17