

LOC I-GRR 109.7	APP CRS 267°	Rwy Ldg TDZE Apt Elev	10001 790 794
---------------------------	------------------------	-----------------------------	--

ILS or LOC RWY 26L

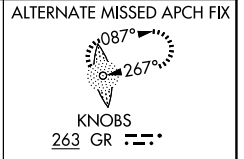
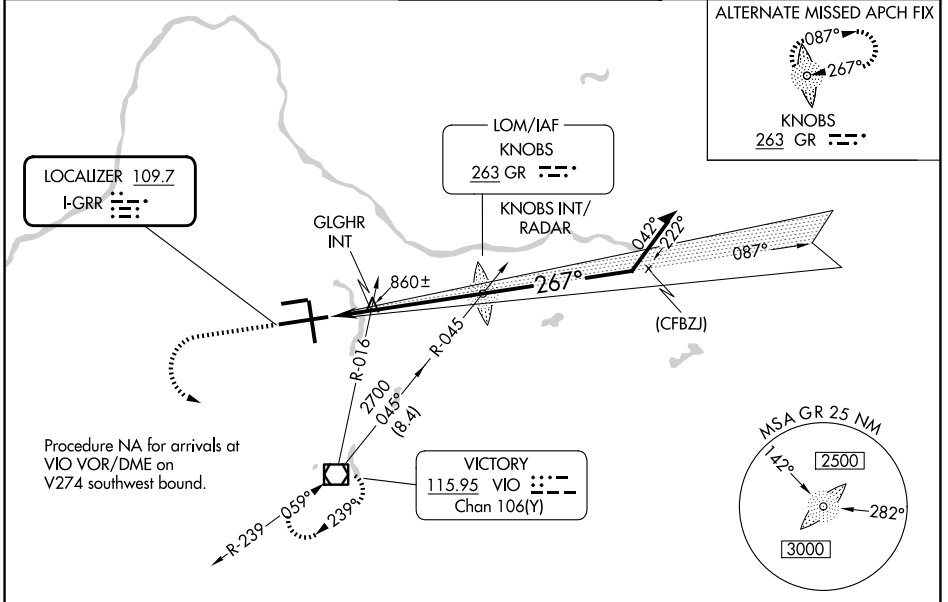
GERALD R FORD INTL (G.R.R)

⚠ For inop ALS increase S-LOC 26L Cat C/D visibility to 1½ SM.
* RVR 1800 authorized with use of FD or AP or HUD to DA.

MALSR

MISSED APPROACH: Climb to 1300 then climbing left turn to 3000 direct VIO VOR/DME and hold, continue climb in hold to 3000.

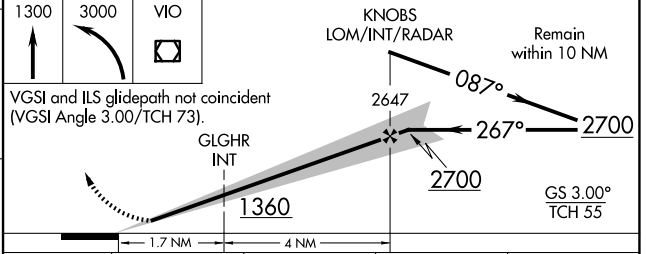
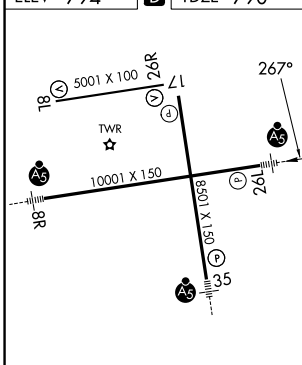
ATIS 118.725	GREAT LAKES APP CON* 128.4 257.6	GRAND RAPIDS TOWER* 135.65 (CTAF) 0 339.8	GND CON 121.8	UNICOM 122.95
------------------------	--	---	-------------------------	-------------------------



EC-1, 11 JUN 2026 to 09 JUL 2026

EC-1, 11 JUN 2026 to 09 JUL 2026

ELEV 794 **D** TDZE 790



CATEGORY	A	B	C	D
S-ILS 26L *	990/24 200 (200-½)			
S-LOC 26L	1360/24	570 (600-½)	1360-1¼	570 (600-1¼)
CIRCLING	1360-1	566 (600-1)	1360-1½ 566 (600-1½)	1380-2 586 (600-2)
GLGHR INT MINIMUMS (DUAL VOR RECEIVERS REQUIRED)				
S-LOC 26L	1120/24	330 (400-½)	1120/26	330 (400-½)
CIRCLING	1260-1	466 (500-1)	1340-1½ 546 (600-1½)	1380-2 586 (600-2)

MIRL Rwy 8L-26R **Ⓛ**
REIL Rwys 8L, 17 and 26R **Ⓛ**
HIRL Rwys 8R-26L and 17-35 **Ⓛ**

FAF to MAP 5.7 NM

Knots	60	90	120	150	180
Min:Sec	5:42	3:48	2:51	2:17	1:54