

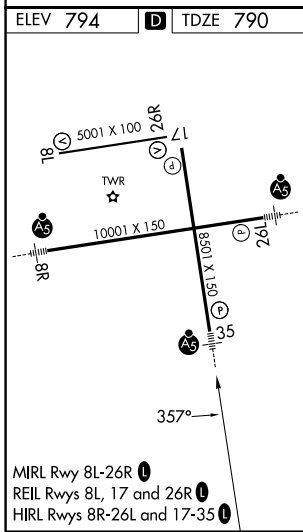
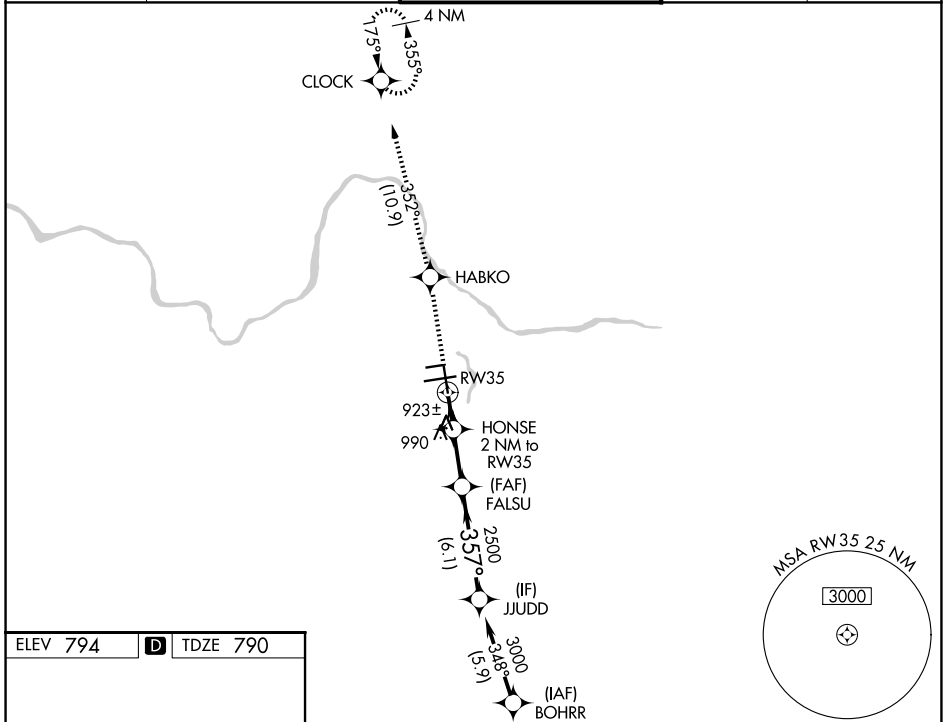
WAAS CH 87112 W35A	APP CRS 357°	Rwy Ldg 8501 TDZE 790 Apt Elev 794
--	------------------------	---

RNAV (GPS) RWY 35

GERALD R FORD INTL (G.R.R.)

RNP APCH - GPS.	MALSR	MISSED APPROACH: Climb to 3000 direct HABKO and on track 352° to CLOCK and hold.
RADAR required for procedure entry.		
<p>⚠ For uncompensated Baro-VNAV systems, LNAV/VNAV NA below -16°C or above 54°C. For inop ALS, increase LNAV Cat D visibility to RVR 6000. * RVR 1800 authorized with use of FD or AP or HUD to DA.</p>		

ATIS 118.725	GREAT LAKES APP CON* 128.4 257.6	GRAND RAPIDS TOWER* 135.65 (CTAF) 339.8	GND CON 121.8	UNICOM 122.95
------------------------	--	--	-------------------------	-------------------------



ELEV 794	D	TDZE 790		
3000	HABKO	CLOCK	VGSI and RNAV glidepath not coincident (VGSI Angle 3.00/TCH 74).	JJUDD
↑		tr 352°	FALSU	3000
	HONSE 2 NM to RW35	2500	357°	3000
	1 NM to RW35	1480	2500	GP 3.00° TCH 55
	1 NM	3.1 NM	6.1 NM	
CATEGORY	A	B	C	D
LPV DA*	990/24 200 (200-½)			
LNAV/VNAV DA	1236/50 446 (500-1)			
LNAV MDA	1180/24	390 (400-½)	1180/35 390 (400-¾)	1180/50 390 (400-1)
CIRCLING	1260-1	466 (500-1)	1340-1½ 546 (600-1½)	1360-2 566 (600-2)

EC-1, 11 JUN 2026 to 09 JUL 2026

EC-1, 11 JUN 2026 to 09 JUL 2026