

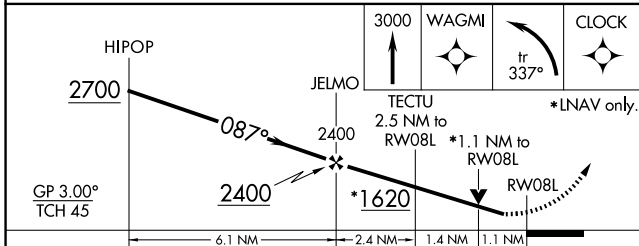
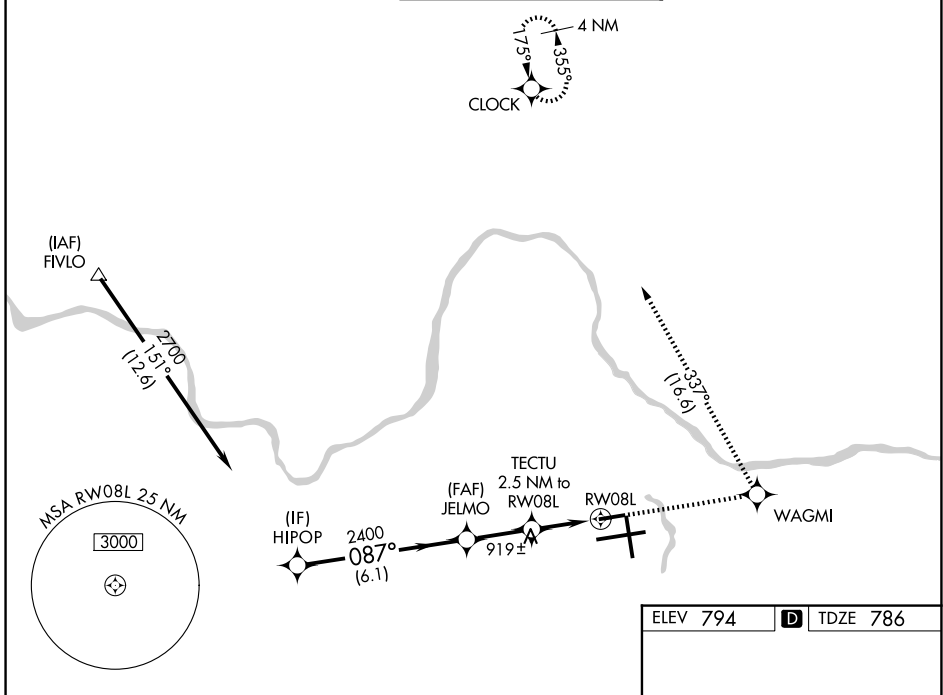
WAAS CH 40213 W08A	APP CRS 087°	Rwy Ldg TDZE Apt Elev	5001 786 794
--	------------------------	-----------------------------	---

RNAV (GPS) RWY 8L

GERALD R FORD INTL (G.R.R)

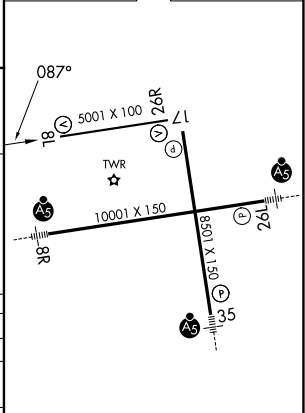
RNP APCH.	MISSED APPROACH: Climb to 3000 direct WAGMI and left turn on track 337° to CLOCK and hold.
<p>T Rwy 8L helicopter visibility reduction below ¾ SM NA. A For uncompensated Baro-VNAV systems, LNAV/VNAV NA below -16°C or above 54°C.</p>	

ATIS 118.725	GREAT LAKES APP CON★ 128.4 257.6	GRAND RAPIDS TOWER★ 135.65 (CTAF) 339.8	GND CON 121.8	UNICOM 122.95
------------------------	--	---	-------------------------	-------------------------



ELEV 794 **D** TDZE 786

CATEGORY	A	B	C	D
LPV DA	1036-1		250 (300-1)	
LNAV/VNAV DA	1203-1½		417 (500-1½)	
LNAV MDA	1180-1	394 (400-1)	1180-1¼ 394 (400-1½)	1180-1¼ 394 (400-1¼)
CIRCLING	1260-1	466 (500-1)	1340-1½ 546 (600-1½)	1360-2 566 (600-2)



MIRL Rwy 8L-26R **1**
 REIL Rws 8L, 17 and 26R **1**
 HIRL Rws 8R-26L and 17-35 **1**

EC-1, 11 JUN 2026 to 09 JUL 2026

EC-1, 11 JUN 2026 to 09 JUL 2026