

WAAS CH 40113 W08B	APP CRS 087°	Rwy Ldg 10001 TDZE 794 Apt Elev 794
--	------------------------	--

RNAV (GPS) RWY 8R

GERALD R FORD INTL (G.R.R.)

RNP APCH.

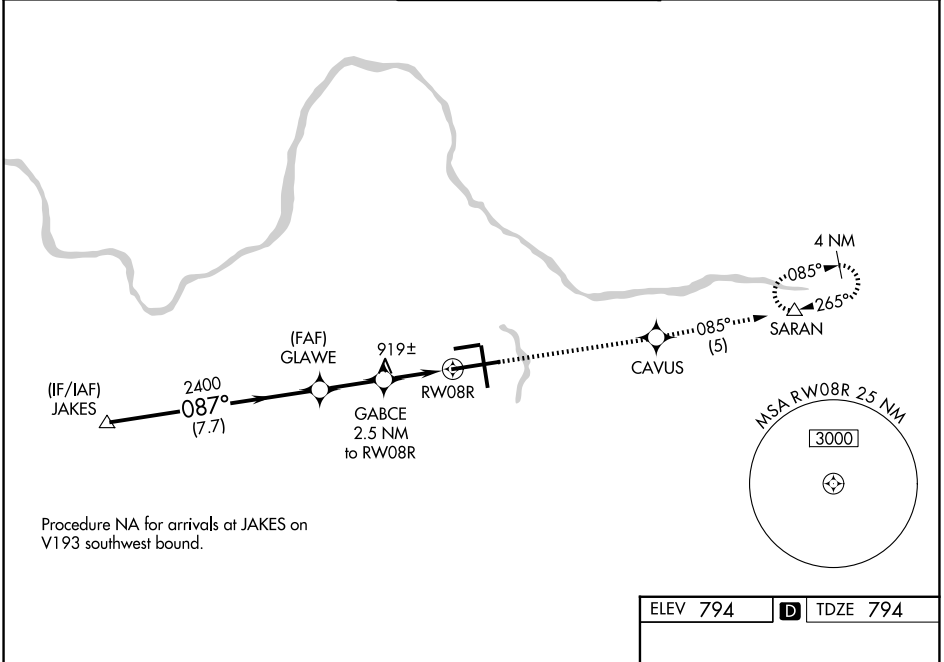
▼ For uncompensated Baro-VNAV systems, LNAV/VNAV NA below -16°C or above 47°C. For inop ALS, increase LNAV Cat D visibility to RVR 6000.
** RVR 1800 authorized with use of FD or AP or HUD to DA.

MALSR



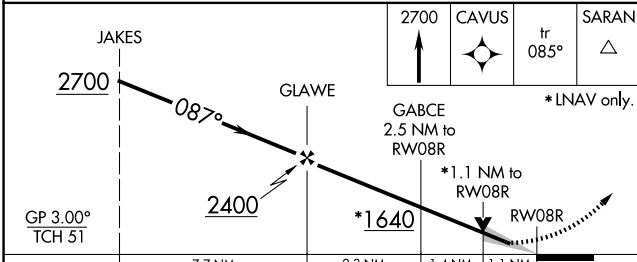
MISSED APPROACH:
Climb to 2700 direct
CAVUS and on track
085° to SARAN and
hold.

ATIS 118.725	GREAT LAKES APP CON* 128.4 257.6	GRAND RAPIDS TOWER* 135.65 (CTAF) 339.8	GND CON 121.8	UNICOM 122.95
------------------------	--	--	-------------------------	-------------------------



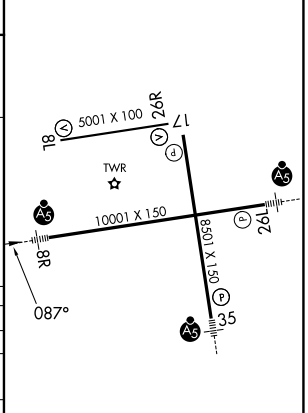
EC-1, 11 JUN 2026 to 09 JUL 2026

EC-1, 11 JUN 2026 to 09 JUL 2026



ELEV 794	D TDZE 794
----------	-------------------

CATEGORY	A	B	C	D
LPV DA **	994/24		200 (200-½)	
LNAV/VNAV DA	1297/50		503 (600-1)	
LNAV MDA	1180/24	386 (400-½)	1180/35	1180/50
			386 (400-¾)	386 (400-1)
CIRCLING	1260-1	466 (500-1)	1340-1½	1360-2
			546 (600-1½)	566 (600-2)



MIRL Rwy 8L-26R **1**
REIL Rws 8L, 17 and 26R **1**
HIRL Rws 8R-26L and 17-35 **1**