

LAUREL, MISSISSIPPI

AL-5185 (FAA)

25275

WAAS CH <b>86404</b> <b>W31A</b>	APP CRS <b>315°</b>	Rwy Ldg <b>5513</b> TDZE <b>238</b> Apt Elev <b>238</b>
--	------------------------	---

# RNAV (GPS) RWY 31

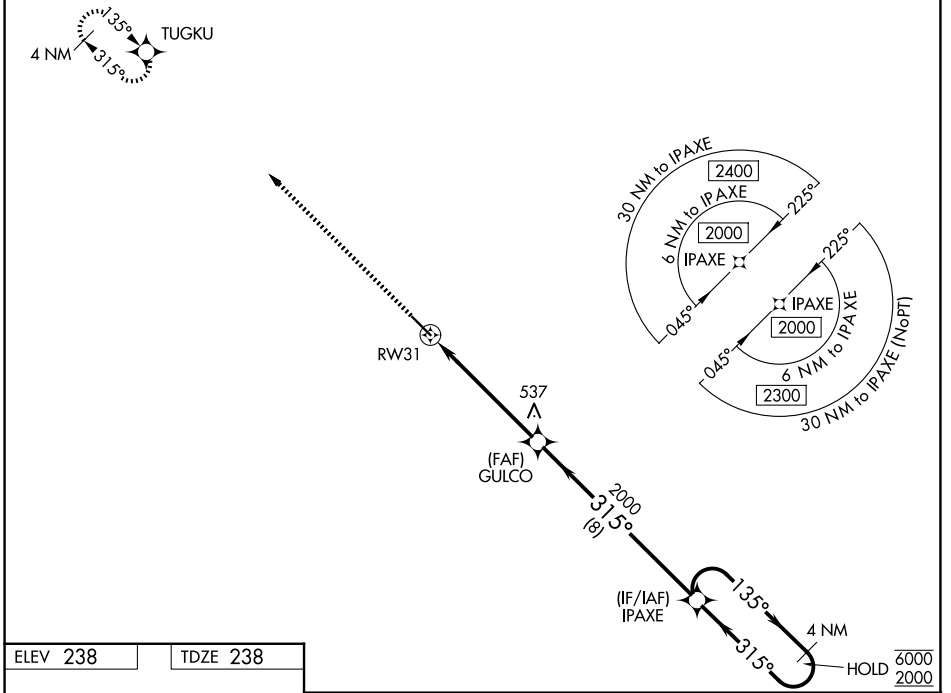
HESLER/NOBLE FLD (LUL)

RNP APCH - GPS.

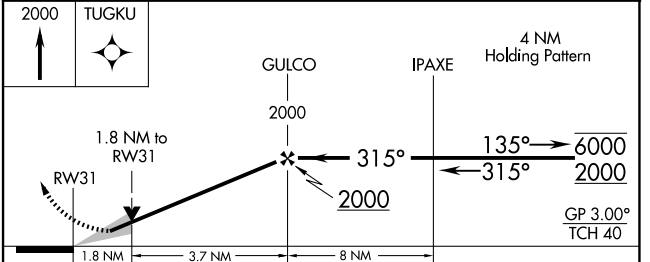
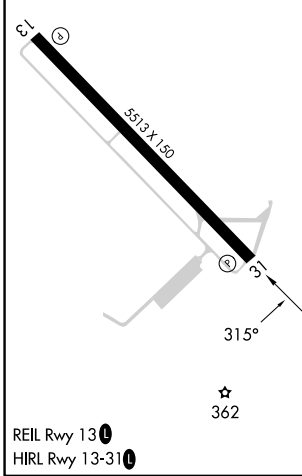
▼ For uncompensated Baro-VNAV systems, LNAV/VNAV NA below -15°C or above 54°C.

▲ MISSED APPROACH: Climb to 2000 direct TUGKU and hold.

AWOS-3PT <b>119.275</b>	HOUSTON CENTER <b>126.8 327.8</b>	UNICOM <b>123.05 (CTAF) 0</b>
----------------------------	--------------------------------------	----------------------------------



ELEV 238	TDZE 238
----------	----------



CATEGORY	A	B	C	D
LPV DA		524-1	286 (300-1)	
LNAV/VNAV DA		554-1	316 (400-1)	
LNAV MDA	840-1	602 (700-1)	840-1¾	602 (700-1¾)
CIRCLING	840-1	602 (700-1)	1040-2¼ 802 (900-2¼)	1060-2¾ 822 (900-2¾)

LAUREL, MISSISSIPPI  
Amdt 1D 02OCT25

31°40'N-89°10' W

# HESLER/NOBLE FLD (LUL) RNAV (GPS) RWY 31

SC-4, 11 JUN 2026 to 09 JUL 2026

SC-4, 11 JUN 2026 to 09 JUL 2026