

RNAV 1 - DME/DME/IRU or GPS required.
 RADAR required.

**TOP ALTITUDE:
 ASSIGNED BY ATC**

TAKEOFF MINIMUMS
 Rwys 16, 34: Standard.

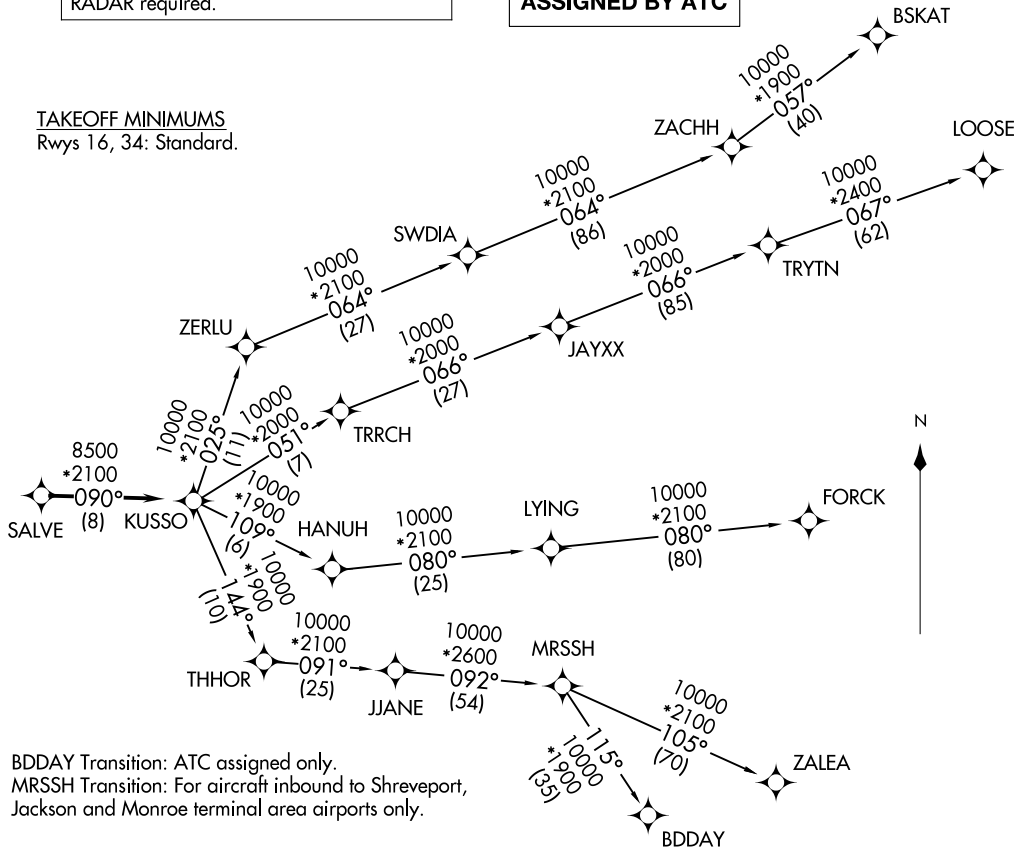
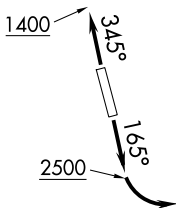
LONE STAR DEP CON
 135.975 379.9
 CLNC DEL
 121.875
 CLNC DEL (When twr closed)
 118.85
 GND CON
 121.875
 ARLINGTON TOWER ★
 128.625 (CTAF)

KUSSO THREE DEPARTURE (RNAV)
 (KUSSO3.KUSSO) 14MAY26

(KUSSO3.KUSSO) 26134
KUSSO THREE DEPARTURE (RNAV)

AL-5189 (FAA)

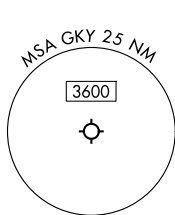
ARLINGTON MUNI (GKY)
 ARLINGTON, TEXAS



NOTE: BDDAY Transition: ATC assigned only.
 NOTE: MRSSH Transition: For aircraft inbound to Shreveport, Jackson and Monroe terminal area airports only.

(CONTINUED ON FOLLOWING PAGE)

NOTE: Chart not to scale.



ARLINGTON, TEXAS
 ARLINGTON MUNI (GKY)

KUSSO THREE DEPARTURE (RNAV)



DEPARTURE ROUTE DESCRIPTION

TAKEOFF RUNWAY 16: Climb on heading 165° to 2500 before turning left.

TAKEOFF RUNWAY 34: Climb on heading 345° to 1400 before turning southeast bound.

When entering controlled airspace, fly heading assigned by ATC, expect RADAR vectors to SALVE, then on track 090° to KUSSO, then on assigned transition. Maintain ATC assigned altitude, expect filed altitude 10 minutes after departure.

BDDAY TRANSITION (KUSSO3.BDDAY)

BSKAT TRANSITION (KUSSO3.BSKAT)

FORCK TRANSITION (KUSSO3.FORCK)

LOOSE TRANSITION (KUSSO3.LOOSE)

MRSSH TRANSITION (KUSSO3.MRSSH)

ZALEA TRANSITION (KUSSO3.ZALEA)

SC-2, 11 JUN 2026 to 09 JUL 2026

SC-2, 11 JUN 2026 to 09 JUL 2026