

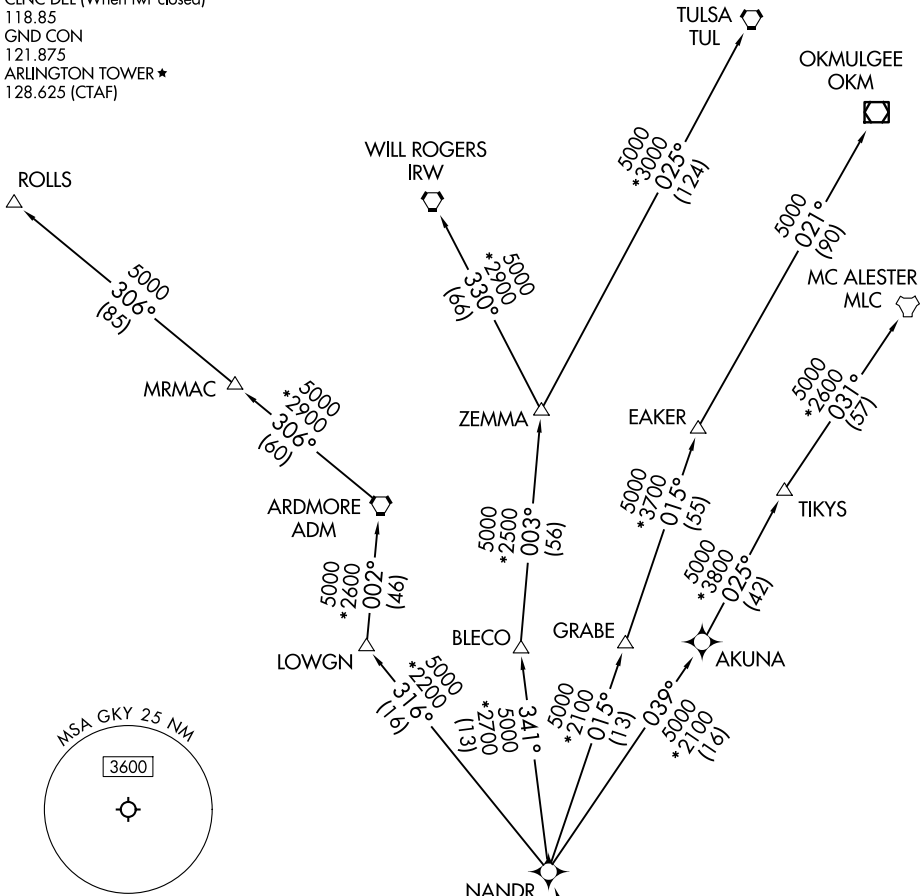
# NANDR FOUR DEPARTURE (RNAV)

ARLINGTON, TEXAS

LONE STAR DEP CON  
 135.975 379.9  
 CLNC DEL  
 121.875  
 CLNC DEL (When twr closed)  
 118.85  
 GND CON  
 121.875  
 ARLINGTON TOWER ★  
 128.625 (CTAF)

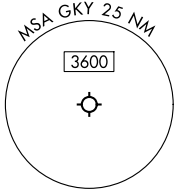
RNAV 1 - DME/DME/IRU or GPS required.  
 RADAR required.

**TOP ALTITUDE:  
 ASSIGNED BY ATC**



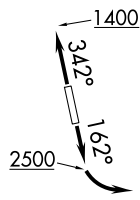
SC-2, 11 JUN 2026 to 09 JUL 2026

SC-2, 11 JUN 2026 to 09 JUL 2026



TAKEOFF MINIMUMS  
 Rwy's 16, 34: Standard.

- NOTE: EAKER Transition: For TUL terminal arrivals only.
- NOTE: TULSA Transition: For all aircraft overflying TUL VORTAC.
- NOTE: Aircraft arriving to the Oklahoma City terminal area, file and expect the ZEMMA enroute transition.



NOTE: Chart not to scale.

(CONTINUED ON FOLLOWING PAGE)

# NANDR FOUR DEPARTURE (RNAV)

(NANDR4.NANDR) 14MAY26

ARLINGTON, TEXAS  
ARLINGTON MUNI (GKY)

# NANDR FOUR DEPARTURE (RNAV)



## DEPARTURE ROUTE DESCRIPTION

TAKEOFF RUNWAY 16: Climb on heading 162° to 2500 before turning left or as assigned by ATC, thence. . .

TAKEOFF RUNWAY 34: Climb on heading 342° to 1400 before turning southeast bound or as assigned by ATC, thence. . .

. . . expect RADAR vectors to cross CUZNO at or above 3000, then on track 357° to cross NANDR at or below 13000, then on assigned transition. Maintain ATC assigned altitude, expect filed altitude 10 minutes after departure.

EAKER TRANSITION (NANDR4.EAKER)

MC ALESTER TRANSITION (NANDR4.MLC)

OKMULGEE TRANSITION (NANDR4.OKM)

ROLLS TRANSITION (NANDR4.ROLLS)

TULSA TRANSITION (NANDR4.TUL)

WILL ROGERS TRANSITION (NANDR4.IRW)

ZEMMA TRANSITION (NANDR4.ZEMMA)

SC-2, 11 JUN 2026 to 09 JUL 2026

SC-2, 11 JUN 2026 to 09 JUL 2026