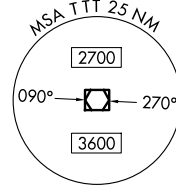


RADAR and DME required.

**TOP ALTITUDE:
ASSIGNED BY ATC**

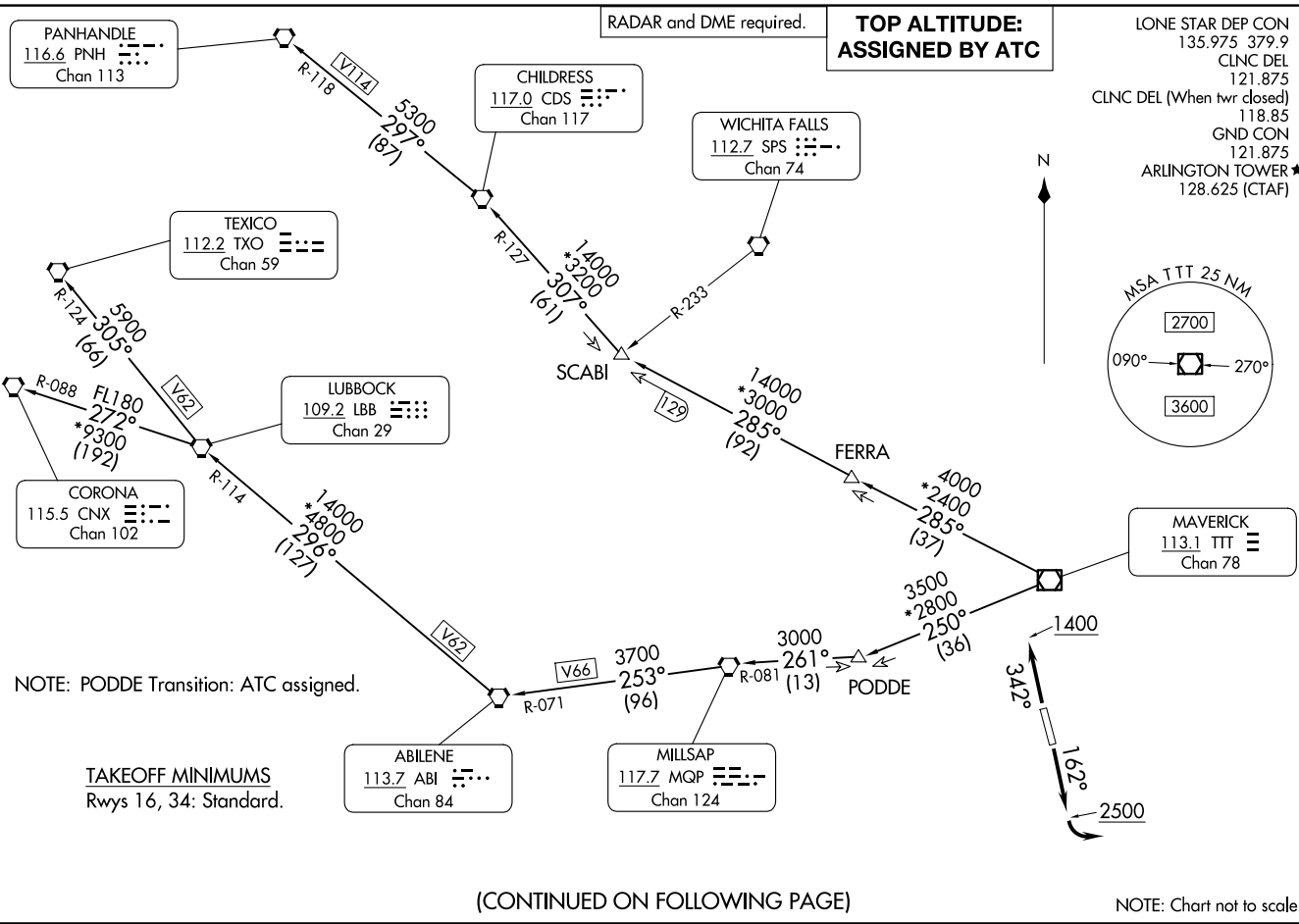
LONE STAR DEP CON
135.975 379.9
CLNC DEL
121.875
CLNC DEL (When twr closed)
118.85
GND CON
121.875
ARLINGTON TOWER★
128.625 (CTAF)



(WORTH1.TTT) 24305
WORTH ONE DEPARTURE

AL-5189 (FAA)

ARLINGTON MUNI (GKY)
ARLINGTON, TEXAS



PANHANDLE
116.6 PNH
Chan 113

CHILDRESS
117.0 CDS
Chan 117

WICHITA FALLS
112.7 SPS
Chan 74

TEXICO
112.2 TXO
Chan 59

LUBBOCK
109.2 LBB
Chan 29

CORONA
115.5 CNX
Chan 102

MAVERICK
113.1 TTT
Chan 78

ABILENE
113.7 ABI
Chan 84

MILLSAP
117.7 MQP
Chan 124

NOTE: PODDE Transition: ATC assigned.

TAKEOFF MINIMUMS
Rwys 16, 34: Standard.

(CONTINUED ON FOLLOWING PAGE)

NOTE: Chart not to scale.

WORTH ONE DEPARTURE
(WORTH1.TTT) 251AN24

ARLINGTON, TEXAS
ARLINGTON MUNI (GKY)

WORTH ONE DEPARTURE



DEPARTURE ROUTE DESCRIPTION

TAKEOFF RUNWAY 16: Climb on heading 162° to 2500 before turning left.

TAKEOFF RUNWAY 34: Climb on heading 342° to 1400 before turning southeast bound.

When entering controlled airspace, fly assigned heading for RADAR vectors to appropriate route. Maintain ATC assigned altitude.

ABILENE TRANSITION (WORTH1.ABI): From over TTT VOR/DME on TTT R-250 to PODDE, then on MQP R-081 to MQP VORTAC, then on MQP R-253 and ABI R-071 to ABI VORTAC.

CHILDRESS TRANSITION (WORTH1.CDS): From over TTT VOR/DME on TTT R-285 to SCABI, then on CDS R-127 to CDS VORTAC.

CORONA TRANSITION (WORTH1.CNX): From over TTT VOR/DME on TTT R-250 to PODDE, then on MQP R-081 to MQP VORTAC, then on MQP R-253 and ABI R-071 to ABI VORTAC, then on ABI R-296 and LBB R-114 to LBB VORTAC, then on LBB R-272 and CNX R-088 to CNX VORTAC.

LUBBOCK TRANSITION (WORTH1.LBB): From over TTT VOR/DME on TTT R-250 to PODDE, then on MQP R-081 to MQP VORTAC, then on MQP R-253 and ABI R-071 to ABI VORTAC, then on ABI R-296 and LBB R-114 to LBB VORTAC.

PANHANDLE TRANSITION (WORTH1.PNH): From over TTT VOR/DME on TTT R-285 to SCABI, then on CDS R-127 to CDS VORTAC, then on CDS R-297 and PNH R-118 to PNH VORTAC.

PODDE TRANSITION (WORTH1.PODDE): From over TTT VOR/DME on TTT R-250 to PODDE.

TEXICO TRANSITION (WORTH1.TXO): From over TTT VOR/DME on TTT R-250 to PODDE, then on MQP R-081 to MQP VORTAC, then on MQP R-253 and ABI R-071 to ABI VORTAC, then on ABI R-296 and LBB R-114 to LBB VORTAC, then on LBB R-305 and TXO R-124 to TXO VORTAC.

SC-2, 11 JUN 2026 to 09 JUL 2026

SC-2, 11 JUN 2026 to 09 JUL 2026