

WAAS CH <b>99636</b> <b>W34A</b>	APP CRS <b>342°</b>	Rwy Ldg TDZE Apt Elev	<b>4002</b> <b>820</b> <b>821</b>
--	------------------------	-----------------------------	---

# RNAV (GPS) RWY 34

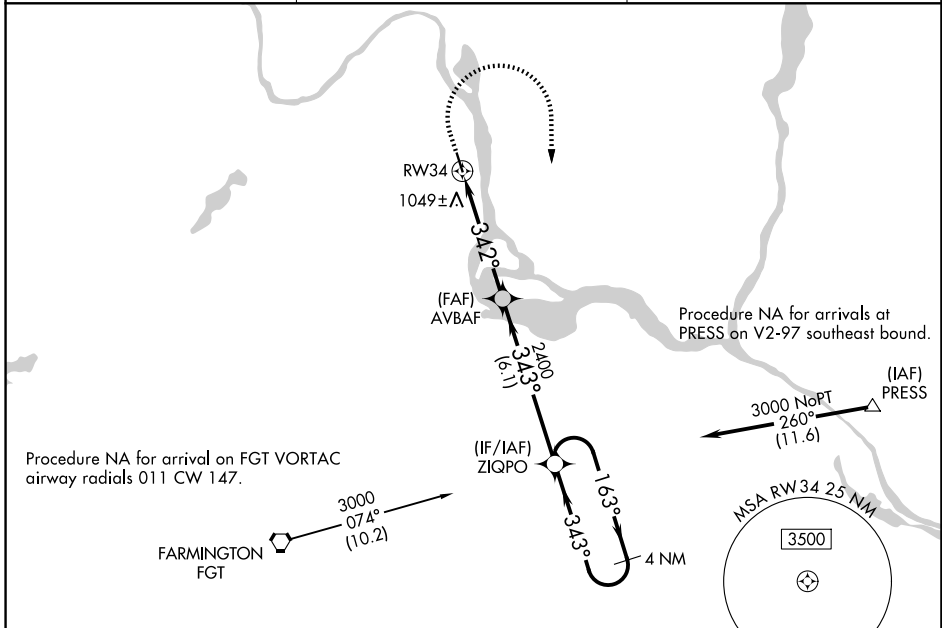
SOUTH ST PAUL MUNI/RICHARD E FLEMING FLD (SGS)

RNP APCH - GPS.

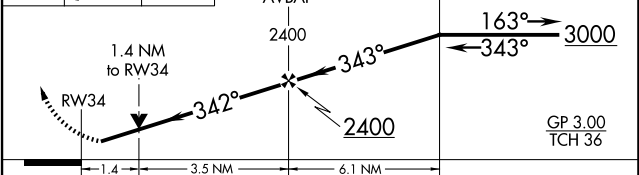
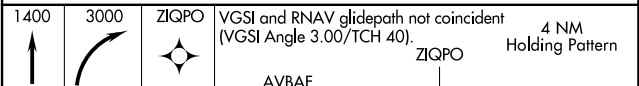
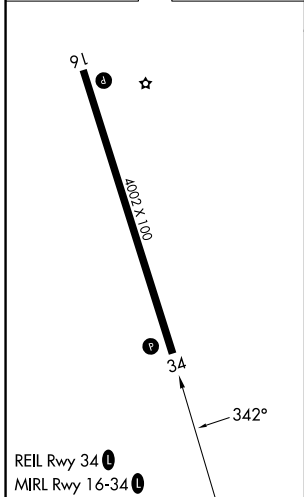
⚠ For uncompensated Baro-VNAV systems, LNAV-VNAV NA below -22°C or above 54°C. Rwy 34 helicopter visibility reduction below ¼ SM NA.

MISSED APPROACH: Climb to 1400 then climbing right turn to 3000 direct ZIQPO and hold.

AWOS-3 <b>119.425</b>	MINNEAPOLIS APP CON <b>121.2 335.65</b>	UNICOM <b>122.7 (CTAF) 0</b>
--------------------------	--	---------------------------------



ELEV 821	TDZE 820
----------	----------



CATEGORY	A	B	C	D
LPV DA		1102-1	282 (300-1)	
LNAV/VNAV DA		1378-1½	558 (600-1½)	
LNAV MDA	1300-1	480 (500-1)	1300-1½	480 (500-1½)
CIRCLING	1400-1 579 (600-1)	1540-1 719 (800-1)	1540-2 719 (800-2)	1620-2 ½ 799 (800-2½)