

WAAS CH 90301 W07A	APP CRS 066°	Rwy Ldg TDZE Apt Elev	5500 515 529
--	------------------------	-----------------------------	---

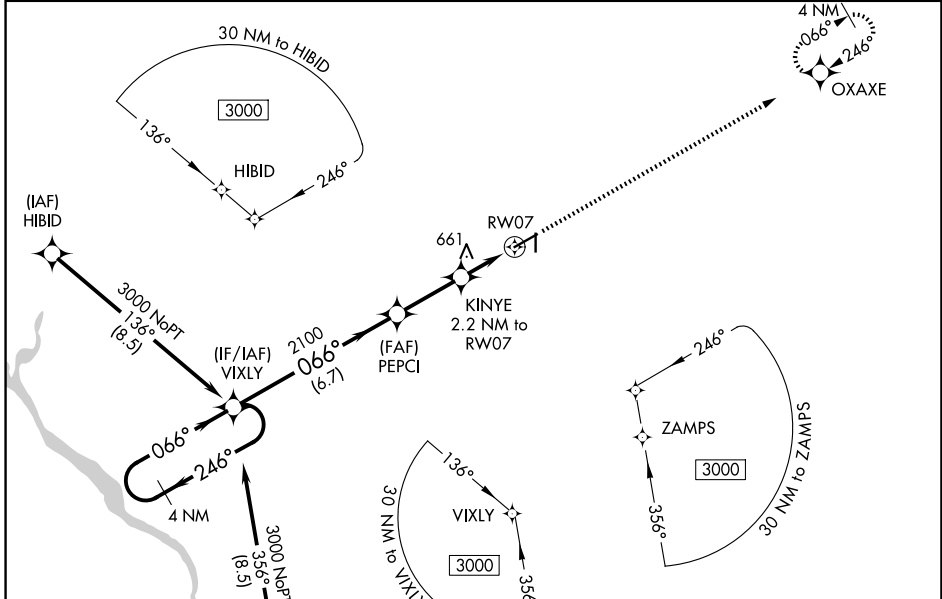
RNAV (GPS) RWY 7

AIKEN RGNL (AIK)

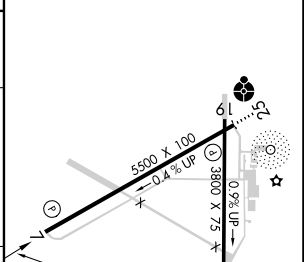
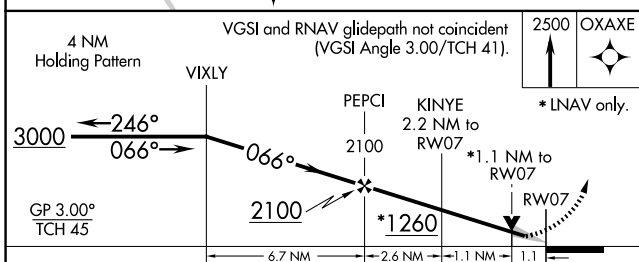
⚠ Baro-VNAV NA when using Augusta Rgnl at Bush Fld altimeter setting. For uncompensated Baro-VNAV NA systems, LNAV/VNAV NA below -1.6°C (4°F) or above 40°C (104°F). DME/DME RNP-0.3 NA. VDP NA with Augusta Rgnl at Bush Fld altimeter setting. When local altimeter setting not received, use Augusta Rgnl at Bush Fld altimeter setting; increase LPV all Cats DAs to 819 feet and all Cats visibility ¼ SM, increase LNAV/VNAV all Cats DAs to 890 feet and all Cats visibility ⅓ SM; increase all MDAs 120 feet and LNAV Cats C/D visibility ⅓ SM and Circling Cat C visibility ¼ SM. Circling Rwy 1, 19 NA at night.

MISSED APPROACH: Climb to 2500 direct OXAXE and hold.

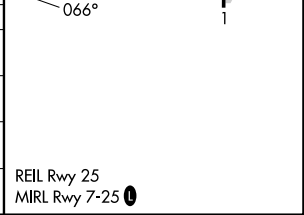
AWOS-3PT 118.025	AUGUSTA APP CON★ 119.15 284.625	UNICOM 122.8 (CTAF) 0
----------------------------	---	---------------------------------



ELEV	529	TDZE	515
------	-----	------	-----



CATEGORY	A	B	C	D
LPV DA		715-¾	200 (200-¾)	
LNAV/VNAV DA		786-⅞	271 (300-⅞)	
LNAV MDA	920-1	405 (400-1)	920-1⅛	405 (400-1⅛)
CIRCLING	980-1 451 (500-1)	1000-1 471 (500-1)	1140-1¾ 611 (700-1¾)	1420-3 891 (900-3)



SE-2, 11 JUN 2026 to 09 JUL 2026

SE-2, 11 JUN 2026 to 09 JUL 2026