

WAAS CH <b>70636</b> <b>W04A</b>	APP CRS <b>037°</b>	Rwy Ldg TDZE <b>1116</b> Apt Elev <b>1119</b>
--	------------------------	---

# RNAV (GPS) RWY 4

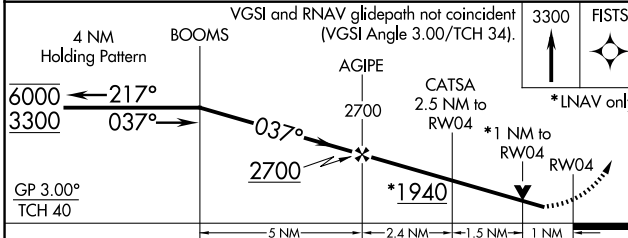
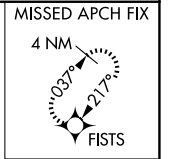
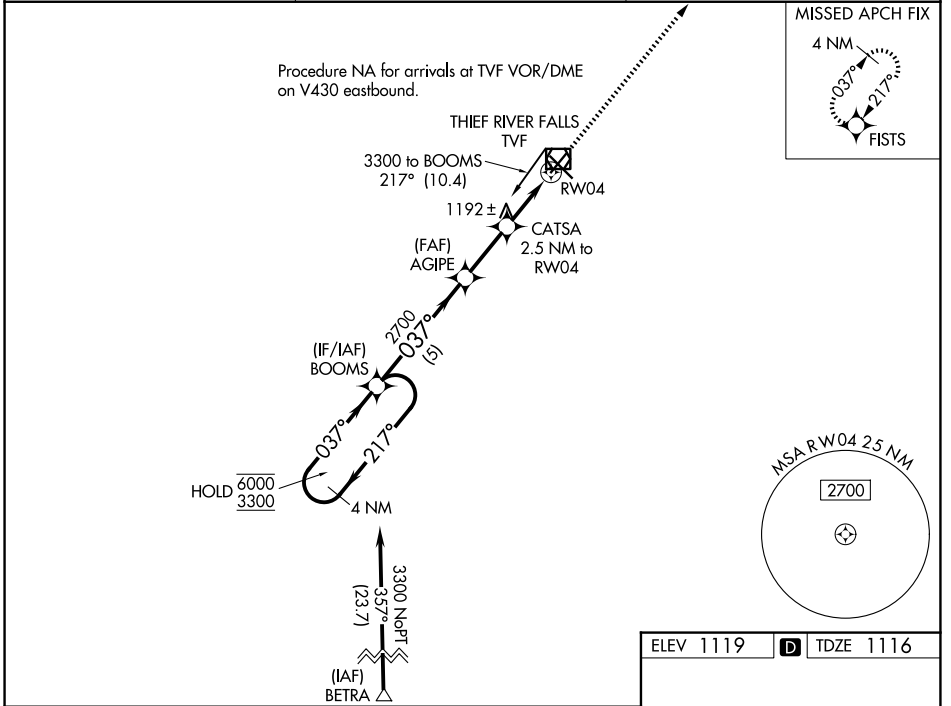
THIEF RIVER FALLS RGNL (TVF)

RNP APCH.

**▽** Rwy 4 helicopter visibility reduction below 3/4 SM NA. For uncompensated Baro-VNAV systems, LNAV/VNAV NA below -17°C or above 54°C.

MISSED APPROACH: Climb to 3300 direct FISTS and hold.

AWOS-3PT <b>119.025</b>	MINNEAPOLIS CENTER <b>132.15 269.6</b>	UNICOM <b>122.8(CTAF) 0</b>
----------------------------	---	--------------------------------



ELEV 1119 **D** TDZE 1116

RWY 4

RWY 13

RWY 22

6502 x 150

6977 x 17

037°

HIRL Rwy 13-31 **0**

MIRL Rwy 4-22 **0**

REIL Rws 4, 13 and 22 **0**

CATEGORY	A	B	C	D
LPV DA	1366-1	250 (300-1)		NA
LNAV/VNAV DA	1366-1	250 (300-1)		NA
LNAV MDA	1460-1	344 (400-1)		NA
CIRCLING	1540-1 421 (500-1)	1580-1 461 (500-1)		NA

NC-1, 11 JUN 2026 to 09 JUL 2026

NC-1, 11 JUN 2026 to 09 JUL 2026