

APP CRS	Rwy Ldg	4855
179°	TDZE	912
	Apt Elev	912

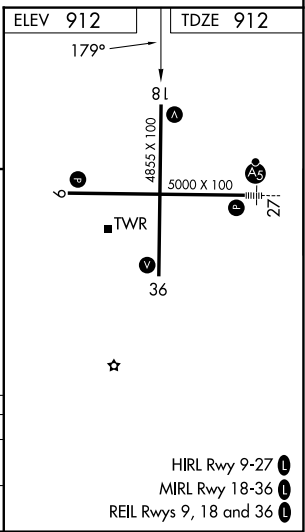
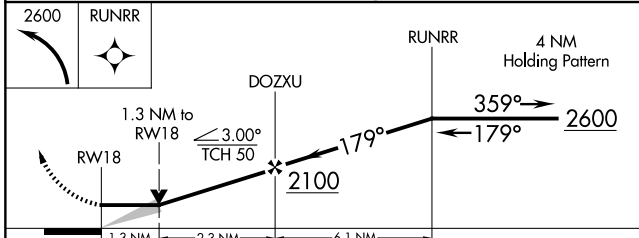
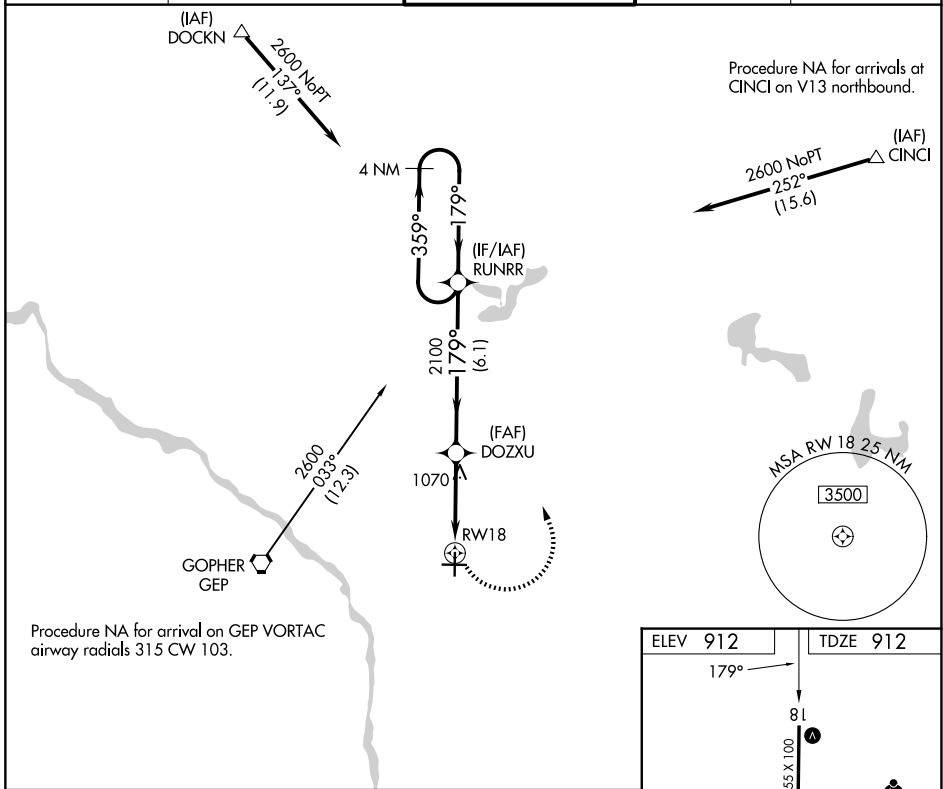
RNAV (GPS) RWY 18
 ANOKA COUNTY/BLAINE (JANES FLD) (A.N.E.)

RNP APCH - GPS.

▼ When local altimeter setting not received, use Crystal altimeter setting and increase all MDA 40 feet and Circling Cat D visibility ¼ SM. VDP NA when using Crystal altimeter setting.

MISSED APPROACH: Climbing left turn to 2600 direct RUNRR and hold.

ATIS 120.625	MINNEAPOLIS APP CON 126.5 335.65	ANOKA TOWER★ 132.4 (CTAF) 0	GND CON 121.85	UNICOM 122.95
------------------------	--	---------------------------------------	--------------------------	-------------------------



CATEGORY	A	B	C	D
LNVA MDA	1380-1 468 (500-1)		1380-1 3/8 468 (500-1 3/8)	
CIRCLING	1400-1 488 (500-1)		1460-1 1/2 548 (600-1 1/2)	1580-2 668 (700-2)

NC-1, 11 JUN 2026 to 09 JUL 2026

NC-1, 11 JUN 2026 to 09 JUL 2026