

(RST1.RST) 23334

# ROCHESTER ONE DEPARTURE

ANOKA COUNTY/BLAINE (JANES FLD) (A.N.E.)

AL-5202 (FAA)

MINNEAPOLIS, MINNESOTA

MINNEAPOLIS DEP CON

126.5 335.65

ATIS

120.625

CLNC DEL

121.3

CLNC DEL

121.85 (when twr closed)

ANOKA TOWER\*

132.4



**TOP ALTITUDE:**  
**(JETS) 7000/**  
**(PROPS) 5000**

### TAKEOFF MINIMUMS

Rwy 9: Standard with minimum climb of 341' per NM to 3000.

Rwy 18: Standard with minimum climb of 371' per NM to 3000.

Rwy 27: Standard with minimum climb of 260' per NM to 2800.

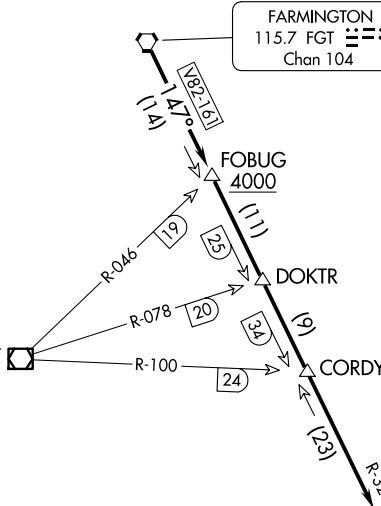
Rwy 36: Standard with minimum climb of 259' per NM to 2800.

FLYING CLOUD  
117.7 FCM   
Chan 124

FARMINGTON  
115.7 FGT   
Chan 104

NOTE: RADAR required.

HALFWAY  
111.2 FOW   
Chan 49



ROCHESTER  
112.0 RST   
Chan 57

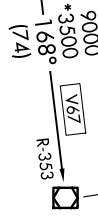


### DEPARTURE ROUTE DESCRIPTION

**TAKEOFF ALL RUNWAYS:** Fly assigned heading and altitude for RADAR vectors to FGT VORTAC then on FGT R-147 and RST R-329 to RST VOR/DME. Cross FOBUG INT/FGT 14 DME at or above 4000, thence . . . .

. . . .on assigned transition or assigned route. Expect clearance to filed altitude/flight level 10 (ten) minutes after departure.

**WATERLOO TRANSITION (RST1.ALO):** From over RST VOR/DME on RST R-168 and ALO R-353 to ALO VOR/DME.



WATERLOO  
112.2 ALO   
Chan 59

NOTE: Chart not to scale.

# ROCHESTER ONE DEPARTURE

(RST1.RST) 13SEP18

MINNEAPOLIS, MINNESOTA

ANOKA COUNTY/BLAINE (JANES FLD) (A.N.E.)

NC-1, 11 JUN 2026 to 09 JUL 2026

NC-1, 11 JUN 2026 to 09 JUL 2026