

9202 UNR 60 01 2026 NRUR 11 1-CN

(WLSTN7.WLSTN) 23334

# WLSTN SEVEN DEPARTURE

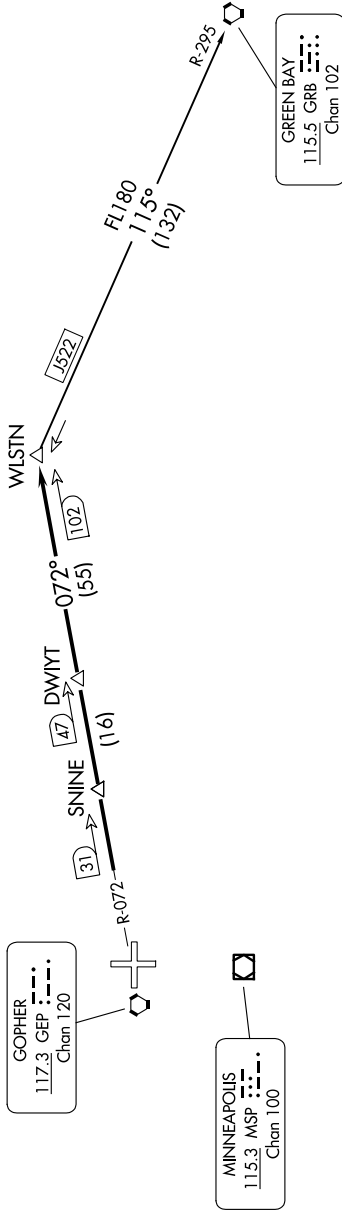
AL-5202 (FAA)

MINNEAPOLIS, MINNESOTA

MINNEAPOLIS DEP CON  
126.5 335.65  
ATIS  
120.625  
CLNC DEL  
121.3  
CLNC DEL  
121.3  
121.85 (when hvr closed)  
ANOKA TOWER ★  
132.4

**TOP ALTITUDE:  
(JETS) 7000/  
(PROPS) 5000**

**TAKEOFF MINIMUMS**  
Rwy 9: Standard with minimum climb of 341' per NM to 3000.  
Rwy 18: Standard with minimum climb of 371' per NM to 3000.  
Rwy 27: Standard with minimum climb of 259' per NM to 2800.  
Rwy 36: Standard with minimum climb of 259' per NM to 2800.



## DEPARTURE ROUTE DESCRIPTION

**TAKEOFF ALL RUNWAYS:** Fly assigned heading and altitude for RADAR vectors to GEP R-072 to Wlstn/GEP 102 DME. Thence . . . .

. . . . on assigned transition or assigned route. Expect clearance to filed altitude/flight level 10 (ten) minutes after departure.

**GREEN BAY TRANSITION (WLSTN7.GRB):** From over Wlstn on GRB R-295 to GRB VORTAC.

**NOTE: RADAR required.**  
NOTE: Chart not to scale.

(WLSTN7.WLSTN) 17AUG17

MINNEAPOLIS, MINNESOTA  
ANOKA COUNTY/BLAINE (JANES FLD) (ANE)