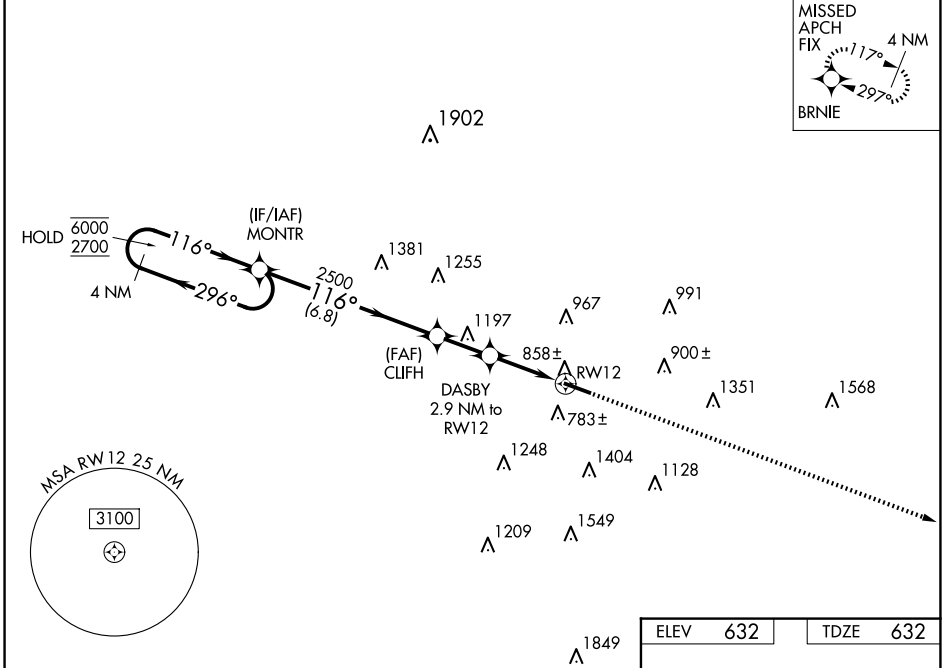


WAAS CH 56600 W12A	APP CRS 116°	Rwy Idg TDZE 5500 632	Apt Elev 632
--	------------------------	---	------------------------

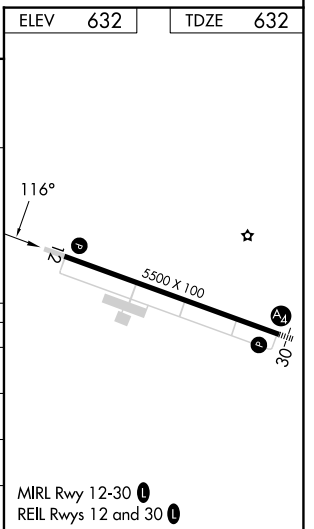
RNAV (GPS) RWY 12

BUTLER COUNTY RGNL/HOGAN FLD (HAO)

RNP APCH - GPS.			MISSED APPROACH: Climb to 3000 direct BRNIE and hold.
ASOS 121.425	CINCINNATI APP CON 121.0 254.25	CLNC DEL 126.25	UNICOM 123.05 (CTAF)



4 NM Holding Pattern		VGSI and RNAV glidepath not coincident (VGSI Angle 3.50/TCH 27).		3000	BRNIE
MONTR		CLIFH 2500	DASBY 2.9 NM to RWY 12		
6000 ← 296°	2700 → 116°	116°			
GP 3.50° TCH 40		2500	1740	1.4 NM to RWY 12	
		6.8 NM	2 NM	1.6 NM	1.4 NM
CATEGORY	A	B	C	D	
LPV DA		1020-1½	388 (400-1½)		
LNAV/VNAV DA		1108-1¾	476 (500-1¾)		
LNAV MDA	1160-1	528 (600-1)	1160-1½	528 (600-1½)	
CIRCLING	1280-1	648 (700-1)	1300-1¾ 668 (700-1¾)	1760-3 1128 (1200-3)	



EC-2, 11 JUN 2026 to 09 JUL 2026

EC-2, 11 JUN 2026 to 09 JUL 2026