

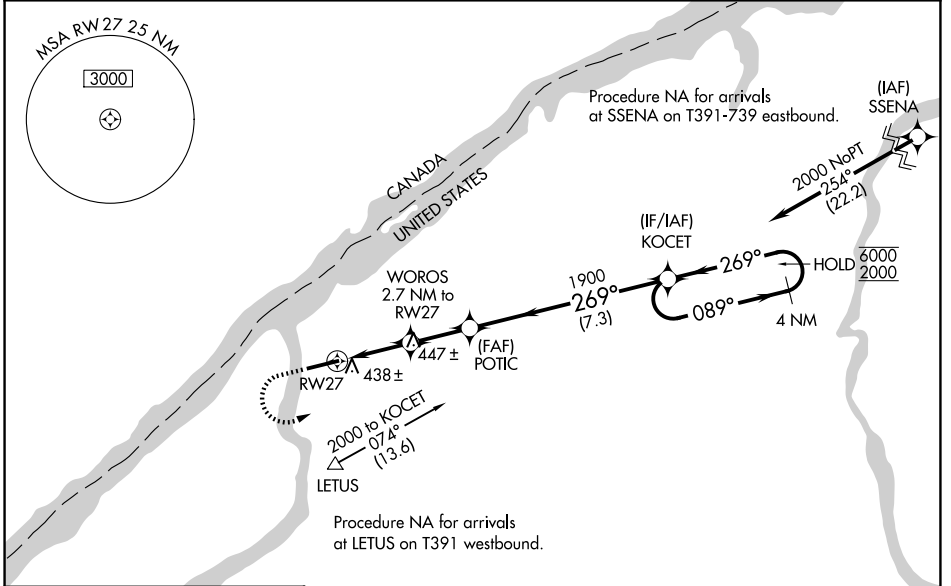
WAAS CH 40041 W27A	APP CRS 269°	Rwy Ldg TDZE Apt Elev	6035 302 302
--	------------------------	-----------------------------	---

RNAV (GPS) RWY 27

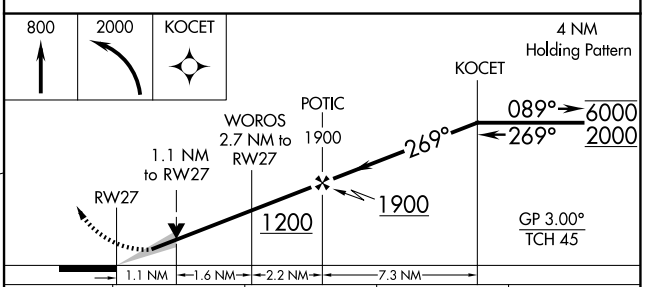
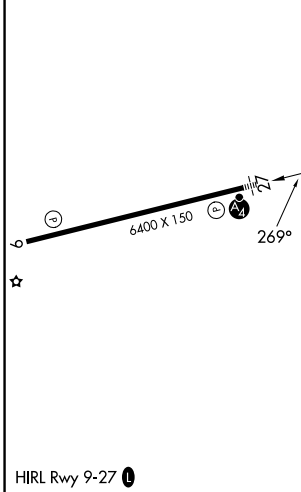
OGDENSBURG INTL (OGS)

RNP APCH - GPS.	MALSF	MISSED APPROACH: Climb to 800 then climbing left turn to 2000 direct KOCET and hold.
<p>For uncompensated Baro-VNAV systems, LNAV/VNAV NA below -15°C or above 54°C. Inop table does not apply LPV, for inop ALS increase LNAV/VNAV all Cats to 1½ SM.</p>		

AWOS-3 118.525	BOSTON CENTER 135.25 377.1	UNICOM 122.8 (CTAF) 0
--------------------------	--------------------------------------	---------------------------------



ELEV 302	D	TDZE 302
----------	----------	----------



CATEGORY	A	B	C	D
LPV DA		552-¾	250 (300-¾)	
LNAV/VNAV DA		717-1½	415 (500-1½)	
LNAV MDA	700-1	398 (400-1)	700-1½	398 (400-1½)
CIRCLING	760-1 458 (500-1)	1000-1 698 (700-1)	1000-2 698 (700-2)	1000-2¼ 698 (700-2¼)

NE-2, 11 JUN 2026 to 09 JUL 2026

NE-2, 11 JUN 2026 to 09 JUL 2026