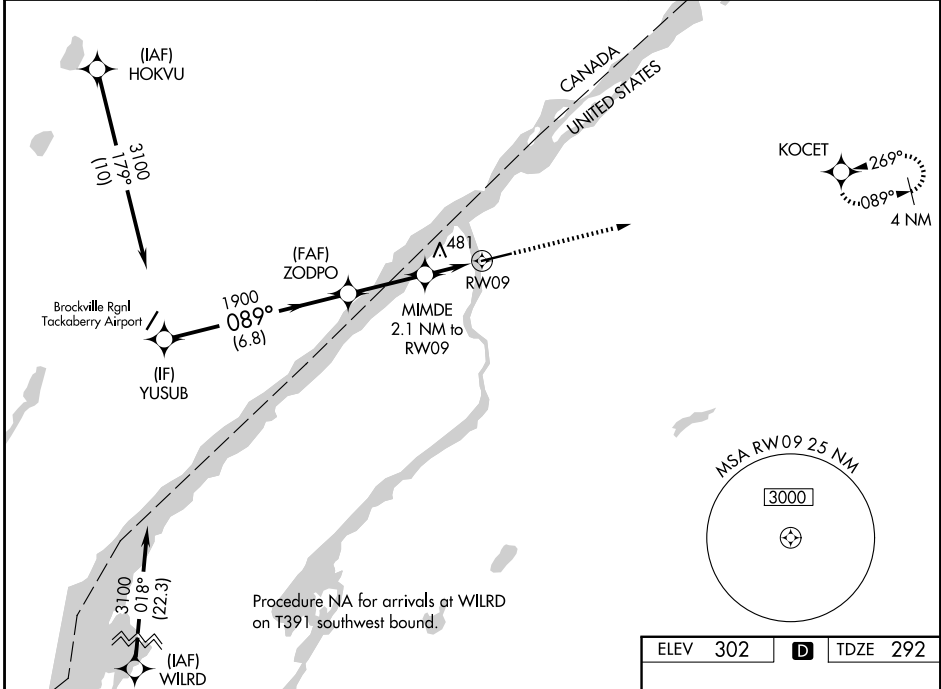


WAAS CH 69528 W09A	APP CRS 089°	Rwy Ldg 6006 TDZE 292 Apt Elev 302
--	------------------------	---

RNAV (GPS) RWY 9

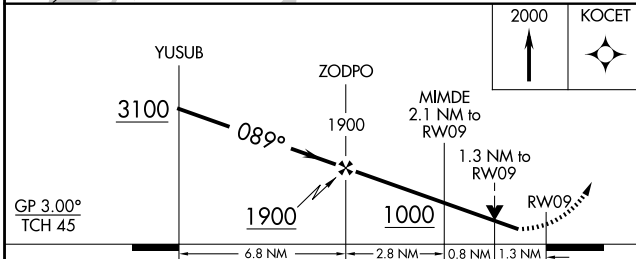
OGDENSBURG INTL (OGS)

RNP APCH - GPS.		MISSED APPROACH: Climb to 2000 direct KOCET and hold.
<p>▽ Rwy 9 helicopter visibility reduction below 3/4 SM NA. For uncompensated Baro-VNAV systems, LNAV/VNAV NA below -15°C or above 54°C.</p> <p>▲</p>		
AWOS-3 118,525	BOSTON CENTER 135.25 377.1	UNICOM 122.8 (CTAF) 0



NE-2, 11 JUN 2026 to 09 JUL 2026

NE-2, 11 JUN 2026 to 09 JUL 2026



ELEV 302	D	TDZE 292		
<p>GP 3.00° TCH 45</p>				
CATEGORY	A	B	C	D
LPV DA	543-3/4		251 (300-3/4)	
LNAV/VNAV DA	781-13/8		489 (500-13/8)	
LNAV MDA	740-1	448 (500-1)	740-13/8	448 (500-13/8)
CIRCLING	760-1 458 (500-1)	1000-1 698 (700-1)	1000-2 698 (700-2)	1000-21/4 698 (700-21/4)
HIRL Rwy 9-27 0				