

FORT EUSTIS, VIRGINIA

# COPTER RNAV (GPS) RWY 14

APCH CRS	Rwy Idg	3025
139°	TDZE	12
	Arprt Elev	12

[USA]

FELKER AAF (KFAP)

RNP APCH - GPS



MISSED APPROACH: Climbing left turn to 2000 direct OGTOE and hold.

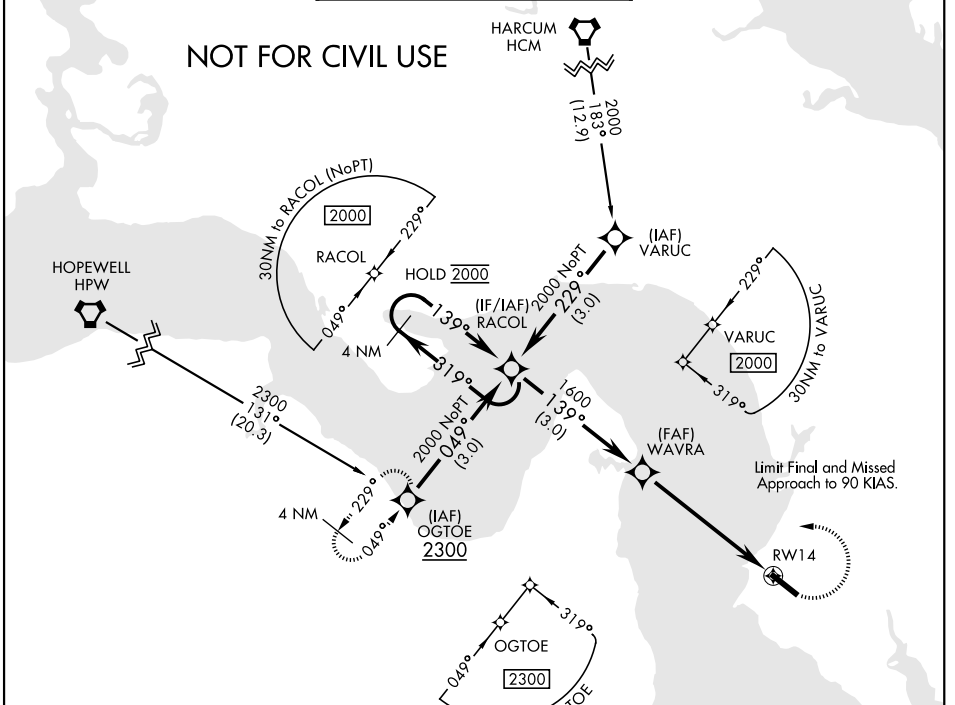
\* When ALS inop, increase CAT A vis to 1 mile.  
 When local altimeter setting not received, use Newport News/Williamsburg Intl altimeter setting.  
 VDP NA when using Newport News/Williamsburg Intl altimeter setting.

NORFOLK APP CON  
**125.7 335.625**

FELKER TOWER ★  
**126.3 (CTAF) 0 269.25**

GND CON  
**121.35 229.4**

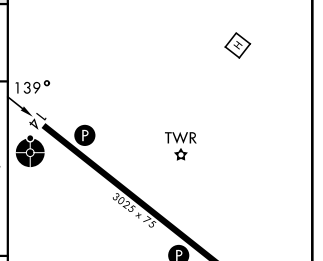
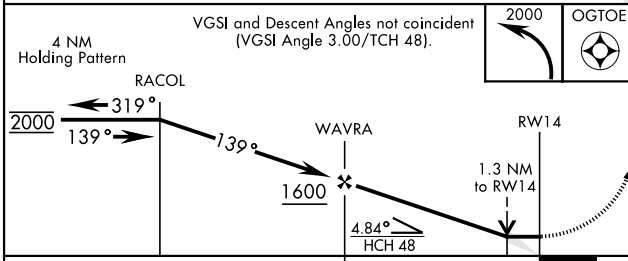
## NOT FOR CIVIL USE



NE-3, 11 JUN 2026 to 09 JUL 2026

NE-3, 11 JUN 2026 to 09 JUL 2026

ELEV	12	TDZE	12
------	----	------	----



CATEGORY	A		BCD	
LNAV MDA*	460-¾	448 (500-¾)	NOT AUTHORIZED	
NEWPORT NEWS / WILLIAMSBURG INTL ALTIMETER				
LNAV MDA*	480-¾	468 (500-¾)	NOT AUTHORIZED	

HIRL Rwy 14-32

FORT EUSTIS, VIRGINIA

37°08'N-76°37'W

FELKER AAF (KFAP)

Orig 16APR26

# COPTER RNAV (GPS) RWY 14