

RNAV (GPS) RWY 14

| | | |
|----------|-----------|------|
| APCH CRS | Rwy Idg | 3025 |
| 139° | TDZE | 12 |
| | Arpt Elev | 12 |

[USA]

FELKER AAF (KFAF)

RNP APCH - GPS

ODALS

MISSED APPROACH: Climbing left turn to 2000 direct HUMAL and hold.

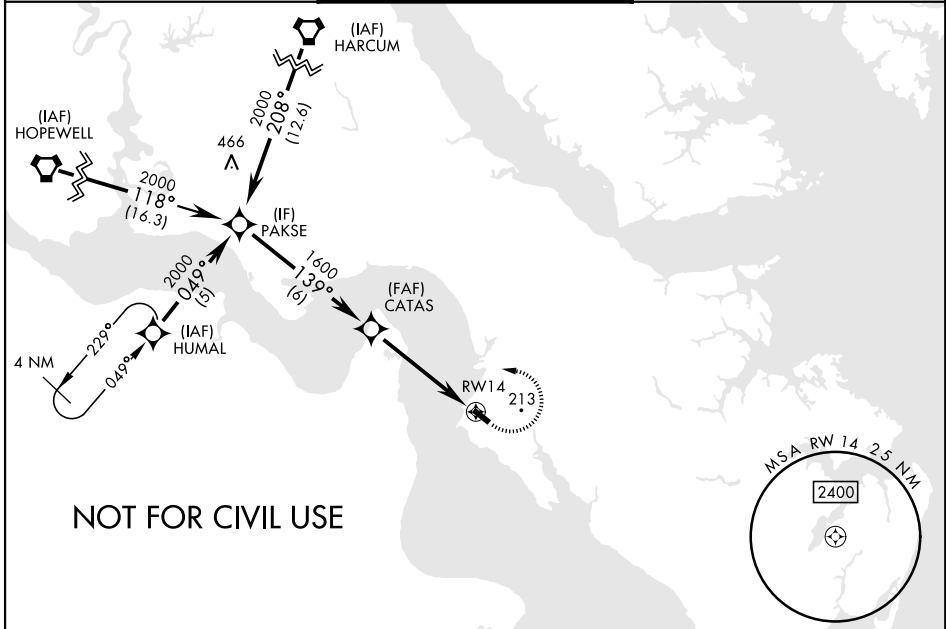
*When ALS inop increase CAT AB vis to 1 mile.

When local altimeter setting not received, use Newport News/Williamsburg Intl altimeter setting. Rwy 14 helicopter visibility reduction below 1 mile NA.

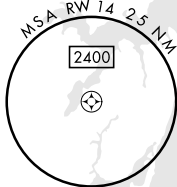
NORFOLK APP CON
125.7 335.625

TOWER ★
126.3 (CTAF) 0 269.25

GND CON
121.35 229.4



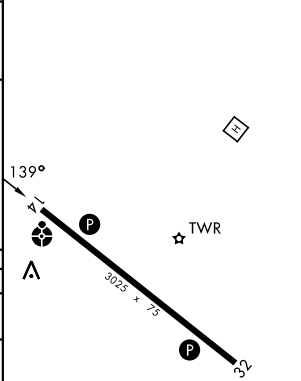
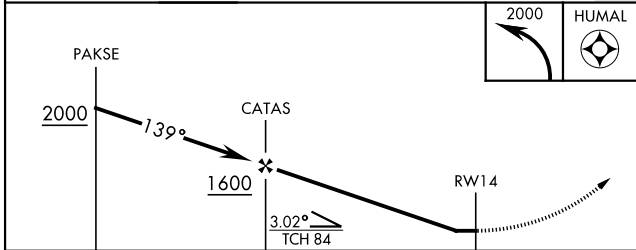
NOT FOR CIVIL USE



NE-3, 11 JUN 2026 to 09 JUL 2026

NE-3, 11 JUN 2026 to 09 JUL 2026

| | | | |
|------|----|------|----|
| ELEV | 12 | TDZE | 12 |
|------|----|------|----|



| CATEGORY | A | B | C | D |
|---|--|-------------------|---|----|
| LNAV MDA * | 500- $\frac{3}{4}$ 488 (500- $\frac{3}{4}$) | | | NA |
| CIRCLING | 520-1 508 (600-1) | 560-1 548 (600-1) | | NA |
| NEWPORT NEWS /WILLIAMSBURG INTL ALTIMETER | | | | |
| LNAV MDA | 520- $\frac{3}{4}$ 508 (600- $\frac{3}{4}$) | | | NA |
| CIRCLING | 540-1 528 (600-1) | 580-1 568 (600-1) | | NA |

HIRL Rwy 14-32 0

RNAV (GPS) RWY 14