

WAAS CH 56347 W28A	APP CRS 284°	Rwy Ldg 3000 TDZE 150 Apt Elev 150
--	------------------------	---

RNAV (GPS) RWY 28

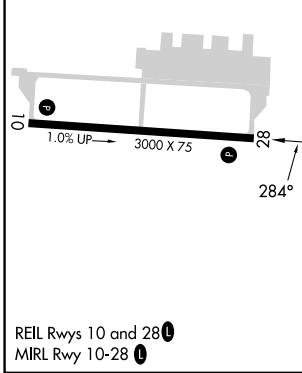
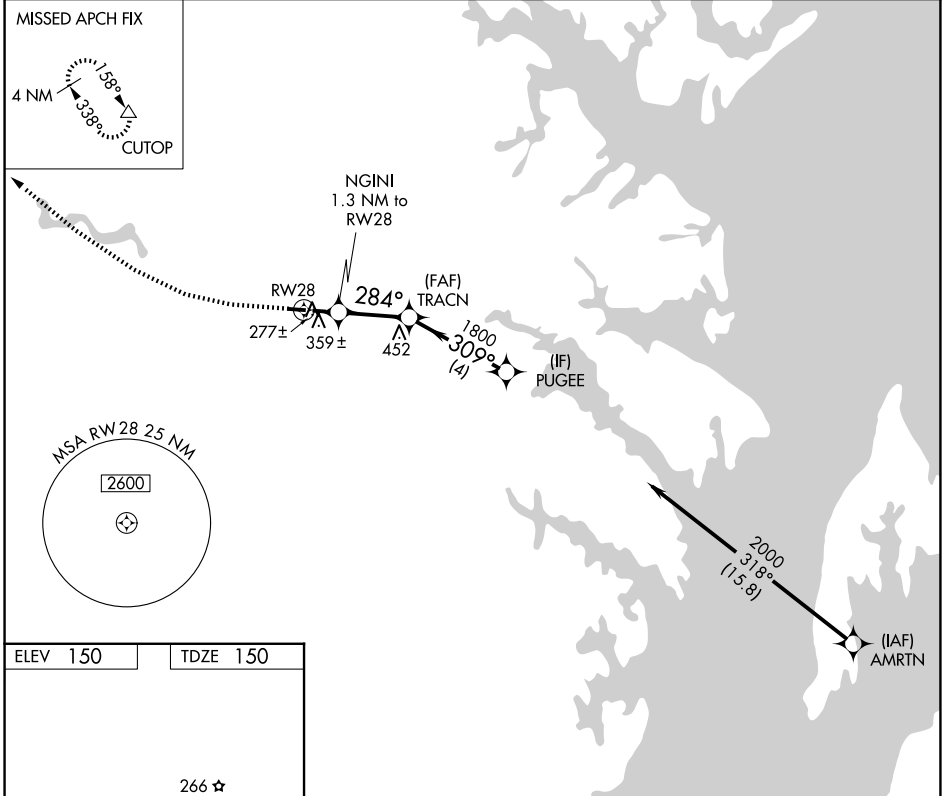
FORT MEADE EXEC (FME)

RNP APCH - GPS.

⚠ Rwy 28 helicopter visibility reduction below 3/4 SM NA. Circling Rwy 10 NA at night.

MISSED APPROACH: Climb to 570 then climbing right turn to 2000 direct CUTOP and hold.

AWOS-3 123.925	POTOMAC APP CON 119.7 290.475	UNICOM 123.05 (CTAF) 0
--------------------------	---	----------------------------------



570	2000	CUTOP	VGSI and descent angles not coincident (VGSI Angle 4.00/TCH 57).	PUGEE
↑	↷	△	NGINI 1.3 NM to RW28	TRACN
			RW28	284°
			720	1800
			≤ 4.00° TCH 40°	309°
			1.3 NM	2.5 NM
			4 NM	2000
CATEGORY	A	B	C	D
LP MDA	540-1	390 (400-1)	NA	
LNAV MDA	620-1	470 (500-1)	NA	
CIRCLING	820-1 670 (700-1)	960-1 810 (900-1)	NA	

NE-3, 11 JUN 2026 to 09 JUL 2026

NE-3, 11 JUN 2026 to 09 JUL 2026