

CAMP RIPLEY, MINNESOTA

ILS or LOC RWY 31

LOC I-RYM 111.1 Chan 48	APCH CRS 312°	Rwy Idg TDZE 1146 Arprt Elev 1150
---	-------------------------	---

[USA]

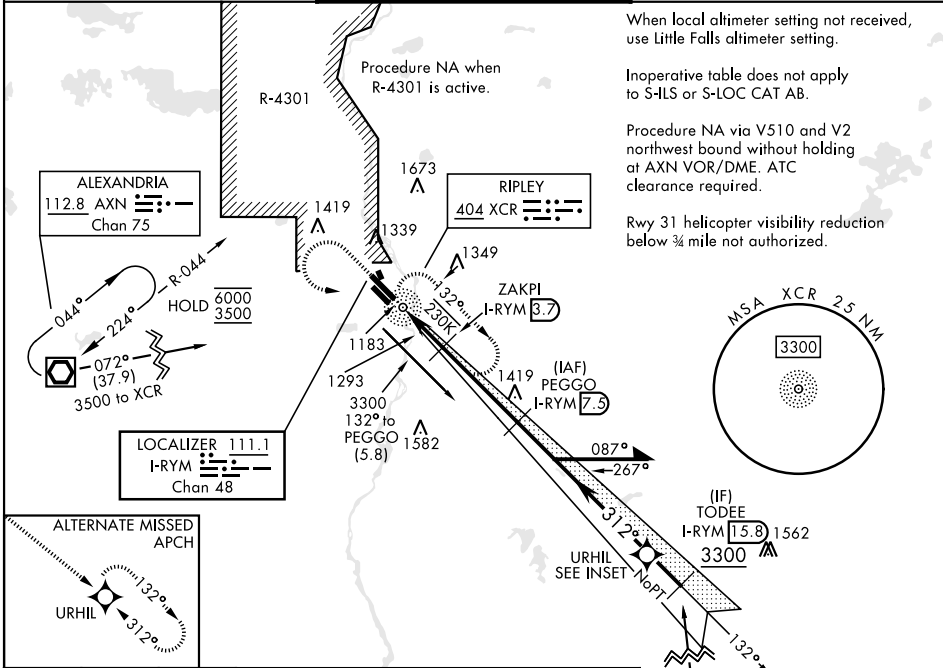
RAY S. MILLER AAF (KRYM)

ADF, DME required. RADAR required for entry at STC VOR/DME.

* When ALS inop, increase CAT CD vis to 1/4 miles.
 ** When ALS inop, increase CAT CD vis to 1/8 miles.

MISSED APPROACH: Climb to 2000, then climbing left turn to 3500 direct XCR NDB and hold. Continue climb in hold to 3500.

MINNEAPOLIS CENTER 118.05 239.0	MILLER TOWER ★ 126.2 0 254.4	CLNC DEL 126.2
---	--	--------------------------



When local altimeter setting not received, use Little Falls altimeter setting.

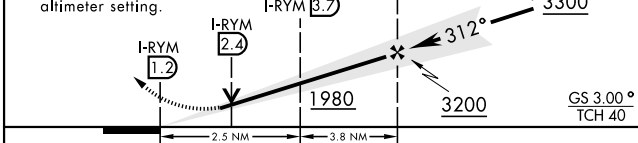
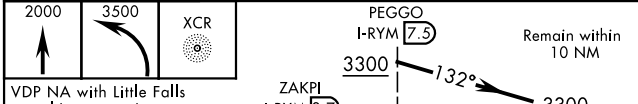
Inoperative table does not apply to S-ILS or S-LOC CAT AB.

Procedure NA via V510 and V2 northwest bound without holding at AXN VOR/DME. ATC clearance required.

Rwy 31 helicopter visibility reduction below 3/4 mile not authorized.

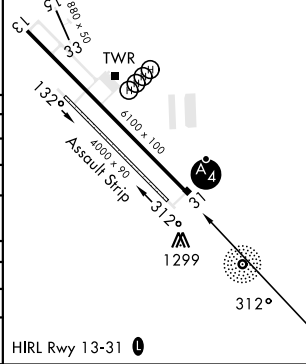
NC-1, 11 JUN 2026 to 09 JUL 2026

NC-1, 11 JUN 2026 to 09 JUL 2026



CATEGORY	A	B	C	D
S-ILS 31		1396-1	250 (300-1)	
S-LOC 31*		1580-1	434 (500-1)	
CIRCLING	1640-1	1660-1	1720-1½	2080-3
	490 (500-1)	510 (600-1)	570 (600-1½)	930 (1000-3)
LITTLE FALLS ALTIMETER SETTING MINIMUMS				
S-ILS 31		1420-1	274 (300-1)	
S-LOC 31**	1620-1	474 (500-1)	1620-1½	474 (500-1½)
	530 (600-1)	550 (600-1)	610 (700-1¾)	970 (1000-3)

ELEV 1150	TDZE 1146
-----------	-----------



CAMP RIPLEY, MINNESOTA
Amdt 7 05OCT23

46°05'N-94°22'W

RAY S. MILLER AAF (KRYM)

ILS or LOC RWY 31