

RNAV (GPS) RWY 13

APCH CRS **132°** Rwy ldg **6100**
 TDZE **1150**
 Arpt Elev **1150**

[USA]

RAY S. MILLER AAF (KRYM)

RNP APCH-GPS

RADAR required for procedure entry at STC VOR/DME.

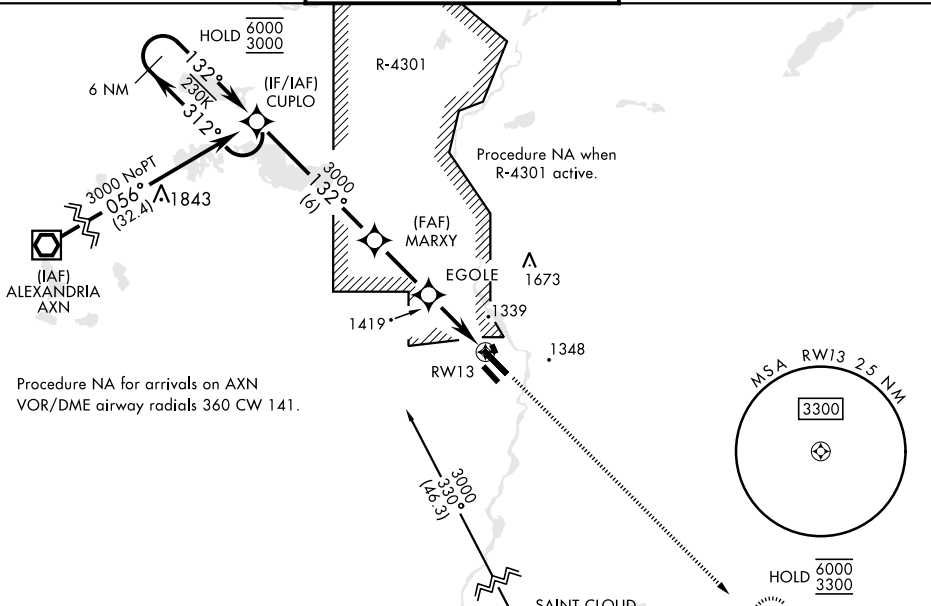


MISSED APPROACH: Climb to 3300 direct URHIL and hold.

MINNEAPOLIS CENTER
118.05 239.0

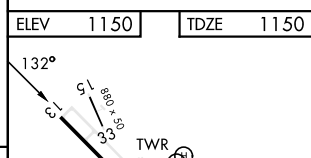
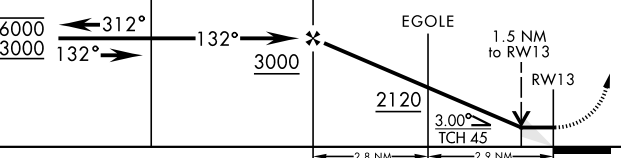
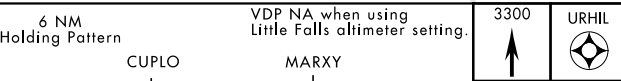
MILLER TOWER ★
126.2 254.4

CLNC DEL
126.2



Procedure NA for arrivals on AXN
 VOR/DME airway radials 360 CW 141.

When local altimeter setting not received,
 use Little Falls altimeter setting.



| CATEGORY | A | | B | | C | | D | |
|--------------------------------|--------|-------------|---------|--------------|---------|--------------|--------|--------------|
| RNAV MDA | 1680-1 | 530 (600-1) | 1680-1½ | 530 (600-1½) | | | | |
| C CIRCLING | 1680-1 | 530 (600-1) | 1720-1½ | 570 (600-1½) | 1720-1½ | 570 (600-1½) | 2080-3 | 930 (1000-3) |
| LITTLE FALLS ALTIMETER SETTING | | | | | | | | |
| RNAV MDA | 1720-1 | 570 (600-1) | 1720-1½ | 570 (600-1½) | 1720-1½ | 570 (600-1½) | 2120-3 | 970 (1000-3) |
| C CIRCLING | 1720-1 | 570 (600-1) | 1760-1¾ | 610 (700-1¾) | 1760-1¾ | 610 (700-1¾) | 2120-3 | 970 (1000-3) |

| | | | |
|----------------|------|------|------|
| ELEV | 1150 | TDZE | 1150 |
| HIRL Rwy 13-31 | | | |

NC-1, 11 JUN 2026 to 09 JUL 2026

NC-1, 11 JUN 2026 to 09 JUL 2026

RNAV (GPS) RWY 13