

# RNAV (GPS) RWY 31

APCH CRS <b>312°</b>	Rwy Idg <b>6100</b>
	THRE <b>1146</b>
	Arprt Elev <b>1150</b>

[USA]

RAY S. MILLER AAF (KRYM)

RNP APCH - GFS



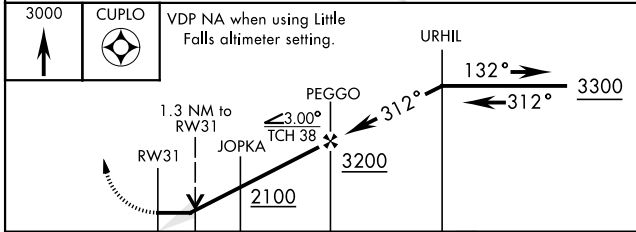
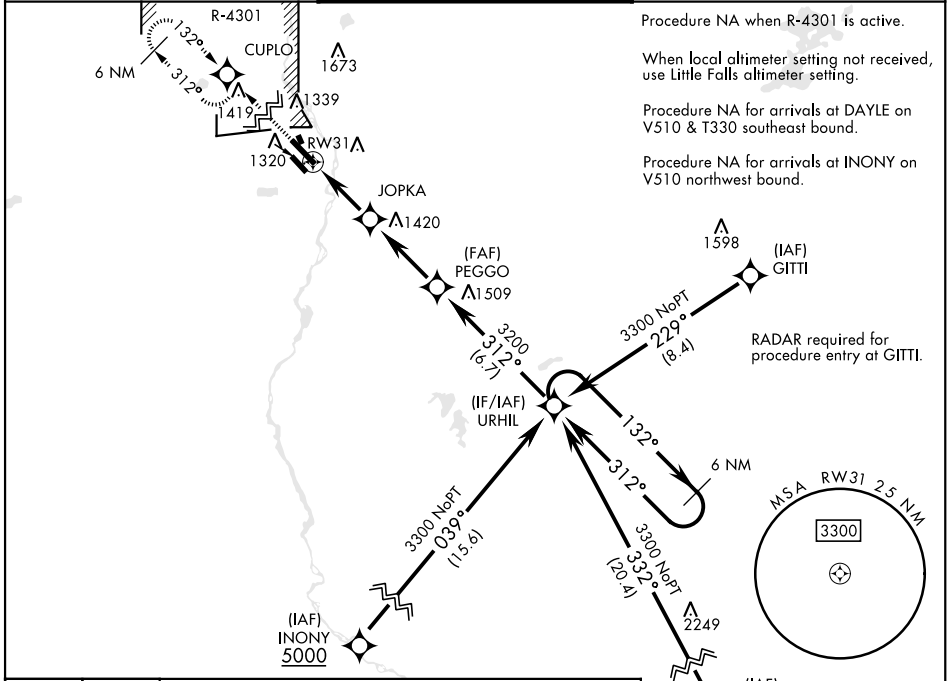
MISSED APPROACH: Climb to 3000 direct CUPLO and hold.

- ▼ \*When ALS inop, increase CAT AB vis to 1 mile; CAT CD vis to 1¼ miles.
- ▲ \*\*When ALS inop, increase CAT AB vis to 1 mile; CAT CD vis to 1½ miles.

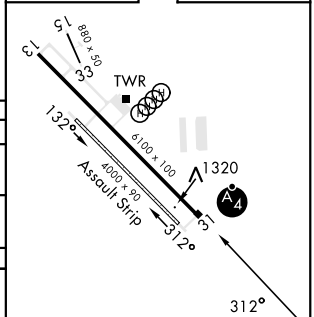
MINNEAPOLIS CENTER  
**118.05 239.0**

MILLER TOWER ★  
**126.2 0 254.4**

GND CON  
**126.2**



ELEV	1150	THRE	1146
------	------	------	------



CATEGORY	A		B		C		D	
RNAV MDA *	1580-¾	434	(500-¾)		1580-1	434	(500-1)	
CIRCLING	1640-1		1660-1		1720-1½		2080-3	
	490 (500-1)		510 (600-1)		570 (600-1½)		930 (1000-3)	
LITTLE FALLS MORRISON CO LINDBERGH FLD ALTIMETER SETTING MINIMUMS								
RNAV MDA **	1620-¾	474	(500-¾)		1620-1⅛	474	(500-1⅛)	
CIRCLING	1680-1		1700-1		1760-1¾		2120-3	
	530 (600-1)		550 (600-1)		610 (700-1¾)		970 (1000-3)	

# RNAV (GPS) RWY 31

NC-1, 11 JUN 2026 to 09 JUL 2026

NC-1, 11 JUN 2026 to 09 JUL 2026