

WAAS CH <b>99638</b> <b>W18A</b>	APP CRS <b>184°</b>	Rwy Ldg TDZE Apt Elev	<b>5941</b> <b>791</b> <b>808</b>
--	------------------------	-----------------------------	---

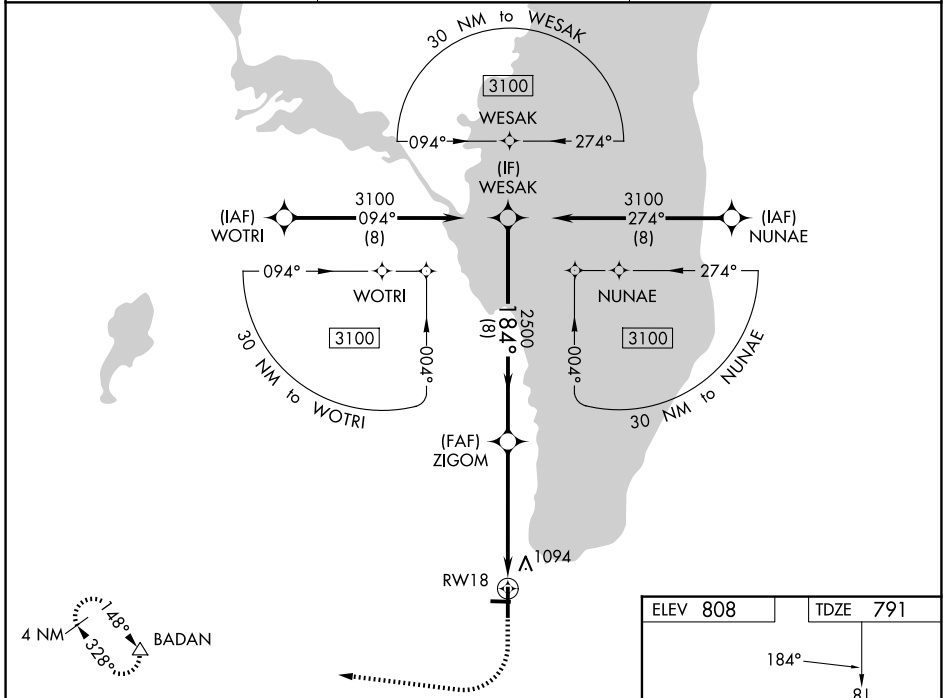
# RNAV (GPS) RWY 18

FOND DU LAC COUNTY (F.L.D)

**⚠** Night landing: Rwy 9, 27 NA. Baro-VNAV NA when using Oshkosh altimeter setting. For uncompensated Baro-VNAV systems, LNAV/VNAV NA below -21°C (-5°F) or above 54°C (130°F). DME/DME RNP-0.3 NA. When local altimeter setting not received, use Oshkosh altimeter setting; increase LPV DA to 1072 feet and LNAV/VNAV DA to 1314 feet and all MDA 60 feet; increase LPV visibility all Cats, LNAV/VNAV visibility all Cats and LNAV Cat C/D visibility 1/8 mile; increase Circling Cat D visibility 1/4 mile.

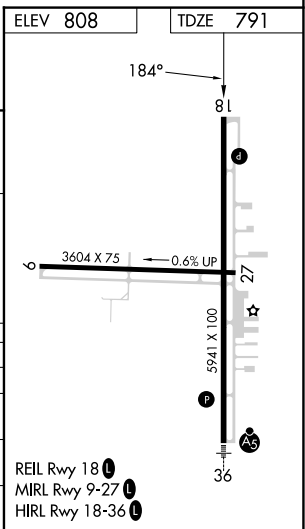
**MISSED APPROACH:**  
Climb to 1300 then climbing right turn 3000 direct BADAN and hold.

ASOS <b>134.0</b>	MILWAUKEE APP CON <b>127.0 263.075</b>	UNICOM <b>123.05 (CTAF) 0</b>
----------------------	---	----------------------------------



VGSI and RNAV glidepath not coincident (VGSI Angle 3.00/TCH 35).

	WESAK	ZIGOM	BADAN
	3100	2500	3000
	184°	2500	1300
	GP 3.00°	*1.6 NM to RW18	*LNAV only
	TCH 45	2500	3000
	8 NM	3.7 NM	1.6 NM
CATEGORY	A	B	C
LPV DA		1041-7/8	250 (300-7/8)
LNAV/VNAV DA		1283-13/4	492 (500-13/4)
LNAV MDA	1320-1	529 (600-1)	1320-1 1/2
CIRCLING	1400-1	592 (600-1)	1520-2
			712 (800-2)



REIL Rwy 18 **0**  
MIRL Rwy 9-27 **1**  
HIRL Rwy 18-36 **1**

EC-3, 11 JUN 2026 to 09 JUL 2026

EC-3, 11 JUN 2026 to 09 JUL 2026