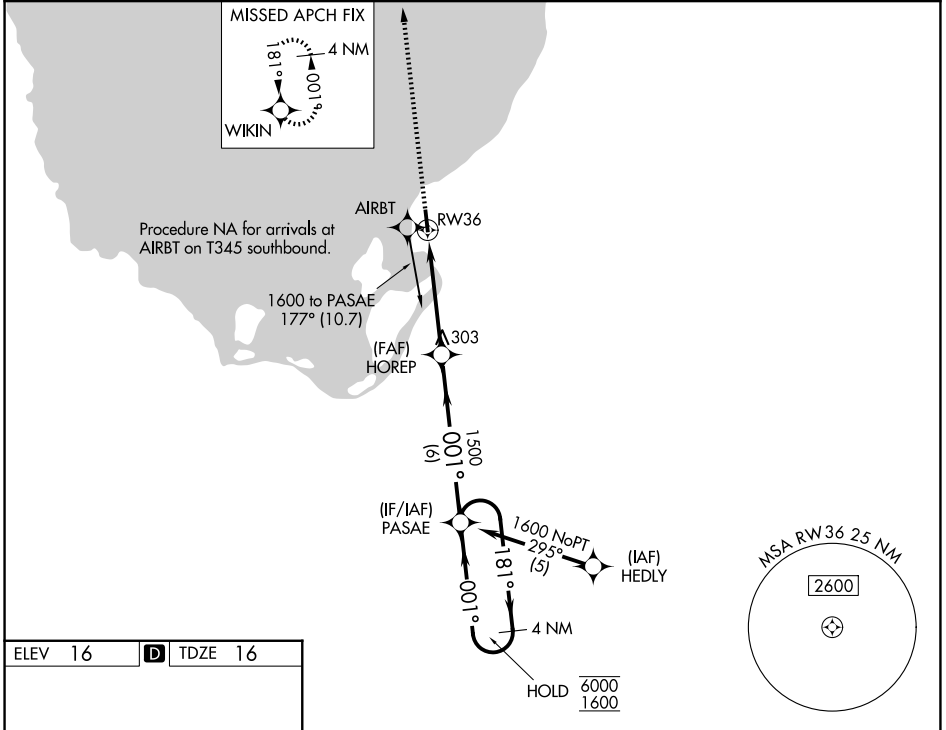


WAAS CH 56408 W36A	APP CRS 001°	Rwy Ldg 4069 TDZE 16 Apt Elev 16
----------------------------------------	------------------------	-------------------------------------------------------------

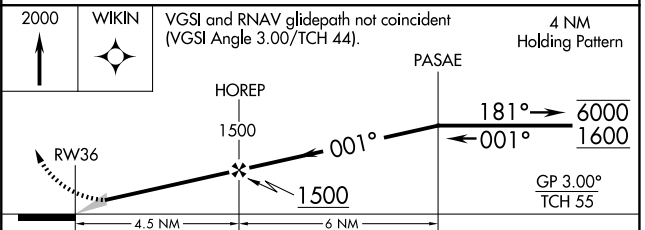
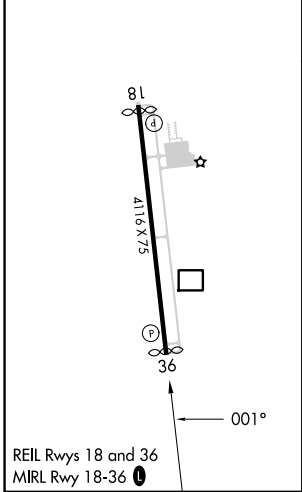
RNAV (GPS) RWY 36

PALM BEACH COUNTY GLADES (PHK)

RNP APCH - GPS.		MISSED APPROACH: Climb to 2000 direct WIKIN and hold.
▼ Baro-VNAV NA. ▲ NA Use PBI altimeter setting; when not received, procedure NA.		
PBI ASOS 123.75	PALM BEACH APP CON 125.2 317.4	UNICOM 122.8 (CTAF) 0



ELEV 16	D	TDZE 16
---------	----------	---------



CATEGORY	A	B	C	D
LPV DA	471-1 $\frac{3}{8}$ 455 (500-1 $\frac{1}{8}$)			
LNAV/VNAV DA	429-1 $\frac{1}{8}$ 413 (500-1 $\frac{1}{8}$)			
LNAV MDA	540-1 524 (600-1)		540-1 $\frac{1}{2}$ 524 (600-1 $\frac{1}{2}$)	
CIRCLING	580-1 564 (600-1)		760-2 $\frac{1}{4}$ 744 (800-2 $\frac{1}{4}$) 760-2 $\frac{1}{2}$ 744 (800-2 $\frac{1}{2}$)	

SE-3, 11 JUN 2026 to 09 JUL 2026

SE-3, 11 JUN 2026 to 09 JUL 2026