

WAAS CH 99702 W32A	APP CRS 321°	Rwy Ldg TDZE Apt Elev	5600 950 953
--	------------------------	-----------------------------	---

RNAV (GPS) RWY 32

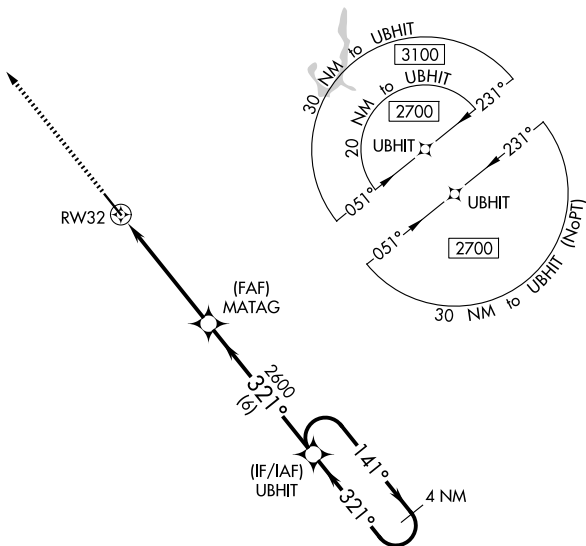
NEWTON MUNI-EARL JOHNSON FLD (TNU)

⚠ For uncompensated Baro-VNAV systems, LNAV/VNAV NA below -19°C (2°F) or above 54°C (130°F). DME/DME RNP-0.3 NA.
⚠ For inop MALS, increase LNAV/VNAV all Cats visibility to ¾ SM.

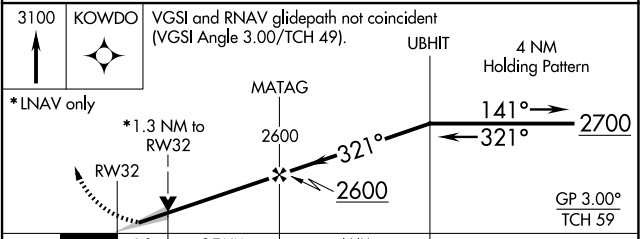
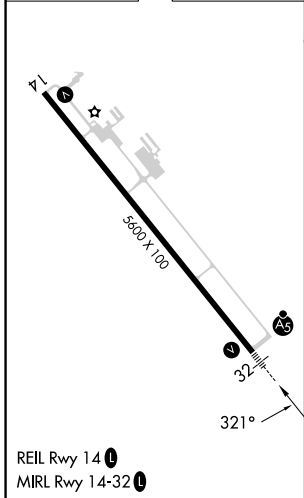


MISSED APPROACH: Climb to 3100 direct KOWDO and hold.

AWOS-3 132.275	DES MOINES APP CON 123.9 307.15	CLNC DEL 126.3	UNICOM 122.8 (CTAF) 0
--------------------------	---	--------------------------	---------------------------------



ELEV 953	TDZE 950
----------	----------



CATEGORY	A	B	C	D
LPV DA	1150-½		200 (200-½)	
LNAV/VNAV DA	1202-½		252 (300-½)	
LNAV MDA	1400-½ 450 (500-½)		1400-⅞ 450 (500-⅞)	
CIRCLING	1420-1 467 (500-1)	1440-1 487 (500-1)	1520-1½ 567 (600-1½)	1600-2 647 (700-2)

NC-3, 11 JUN 2026 to 09 JUL 2026

NC-3, 11 JUN 2026 to 09 JUL 2026