

WAAS CH 86938 W18A	APP CRS 176°	Rwy Ldg TDZE Apt Elev	5513 1298 1304
--	------------------------	-----------------------------	---

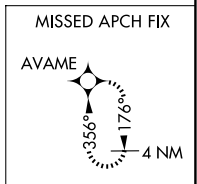
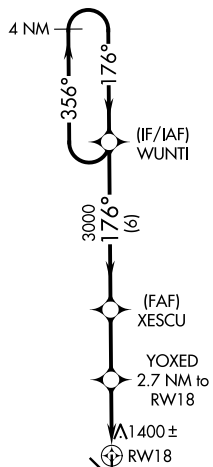
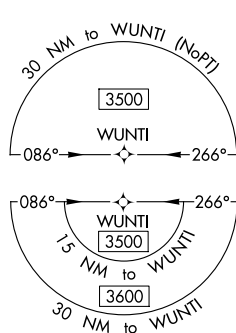
RNAV (GPS) RWY 18

MITCHELL MUNI (MHE)

⚠ For uncompensated Baro-VNAV systems, LNAV/VNAV NA below -20°C (-4°F) or above 54°C (130°F). DME/DME RNP-0.3 NA. When local altimeter setting not received use Huron Rgnl altimeter setting and increase LPV DA to 1637, LNAV/VNAV DA to 1685 and increase all MDA 100 feet. Increase LPV visibility all Cats to 1½ mile, LNAV/VNAV visibility all Cats to 1¾ mile and LNAV Cats C/D to 1¾ mile. Increase Circling Cat C visibility to 1¾ mile. Baro VNAV and VDP NA when using Huron Rgnl altimeter setting.

MISSED APPROACH: Climb to 3500 direct AVAME and hold.

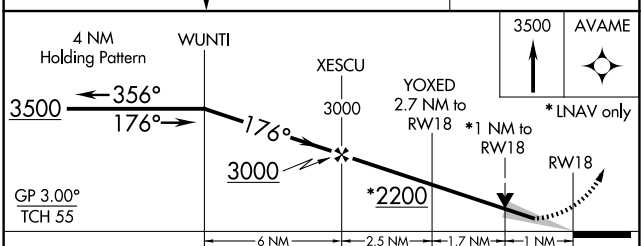
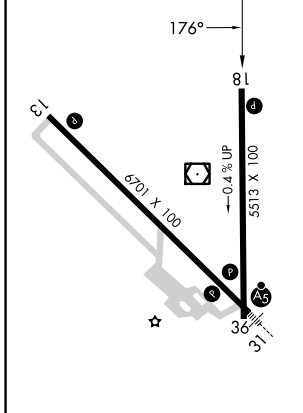
ASOS 124.175	MINNEAPOLIS CENTER 126.25 339.8	UNICOM 122.8 (CTAF) 0
------------------------	---	---------------------------------



NC-1, 11 JUN 2026 to 09 JUL 2026

NC-1, 11 JUN 2026 to 09 JUL 2026

ELEV 1304	TDZE 1298
------------------	------------------



CATEGORY	A	B	C	D
LPV DA		1548-1	250 (300-1)	
LNAV/VNAV DA		1596-1	298 (300-1)	
LNAV MDA		1660-1	362 (400-1)	
CIRCLING	1740-1	1760-1	1820-1½	1860-2
	436 (500-1)	456 (500-1)	516 (600-1½)	556 (600-2)

HIRL Rwy 13-31 **0**
MIRL Rwy 18-36 **0**
REIL Rwy 13 and 18 **0**