

LOC/DME I-SOP 111.5 Chan 52	APP CRS 054°	Rwy Ldg TDZE Apt Elev	5502 455 459
---	------------------------	-----------------------------	---

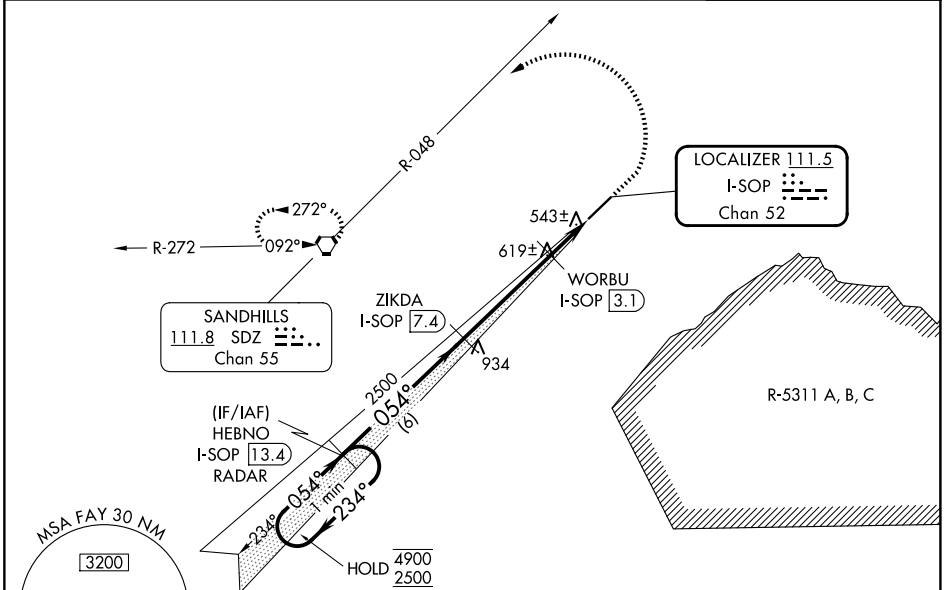
ILS Z or LOC Z RWY 5

MOORE COUNTY(SOP)

DME required.
RADAR required for procedure entry.

MALSR
MISSED APPROACH: Climb to 1400 then climbing left turn to 3300 on heading 300° and on SDZ VORTAC R-048 to SDZ VORTAC and hold.

AWOS-3PT 127.575	FAYETTEVILLE APP CON 127.8 343.725	UNICOM 123.05(CTAF)
----------------------------	--	-------------------------------

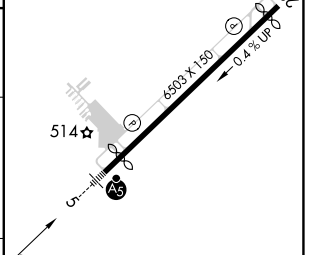
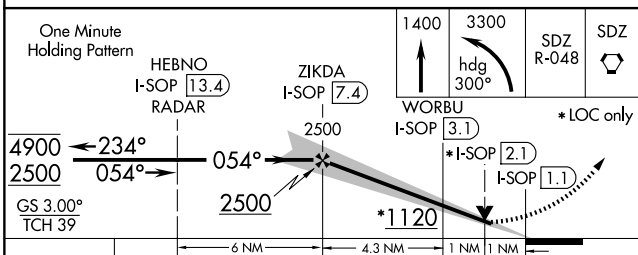


SE-2, 11 JUN 2026 to 09 JUL 2026

SE-2, 11 JUN 2026 to 09 JUL 2026



ELEV 459	D	TDZE 455
----------	---	----------



CATEGORY	A	B	C	D
S-ILS 5	655-1/2 200 (200-1/2)			
S-LOC 5	800-1/2	345 (400-1/2)	800-5/8	345 (400-5/8)
CIRCLING	880-1 421 (500-1)	920-1 461 (500-1)	1100-1 1/4 641 (700-1 3/4)	1360-3 901 (1000-3)

REIL Rwy 23
HIRL Rwy 5-23