

WAAS CH <b>61309</b> W24A	APP CRS <b>244°</b>	Rwy Idg TDZE Apt Elev	<b>6701</b> <b>1218</b> <b>1231</b>
---------------------------------	------------------------	-----------------------------	---

# RNAV (GPS) RWY 24

STATE COLLEGE RGNL (UNV)

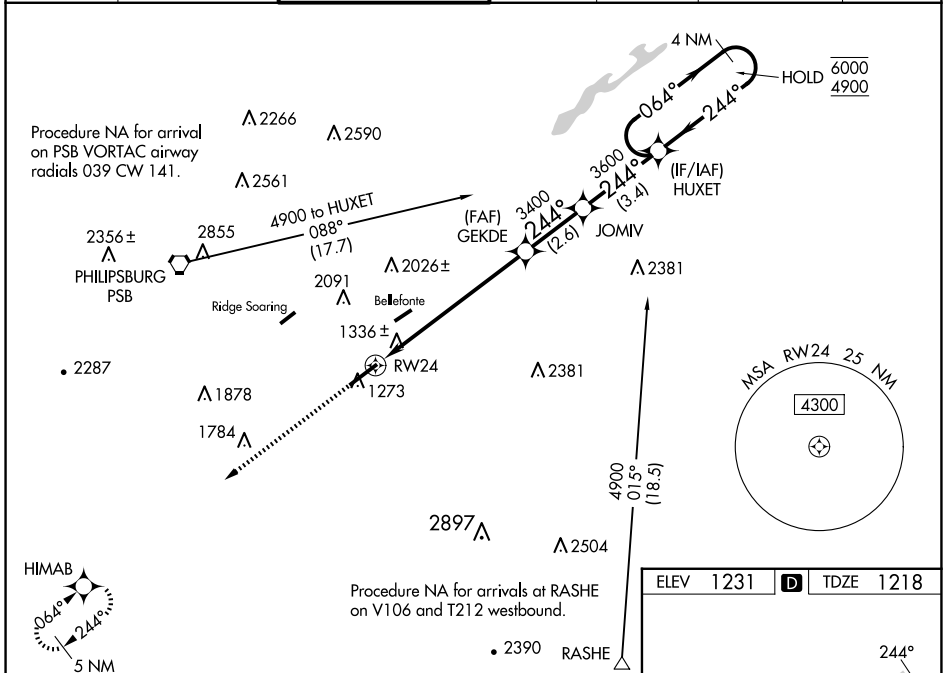
RNP APCH - GPS.

**⚠** Circling NA northwest of Rwy 6-24. For uncompensated Baro-VNAV systems, LNAV/VNAV NA below -17°C or above 54°C.  
 For inop ALS, increase LNAV/VNAV all Cats visibility to RVR 6000.  
 \*RVR 1800 authorized with use of FD or AP or HUD to DA (NA when using Clearfield altimeter setting)



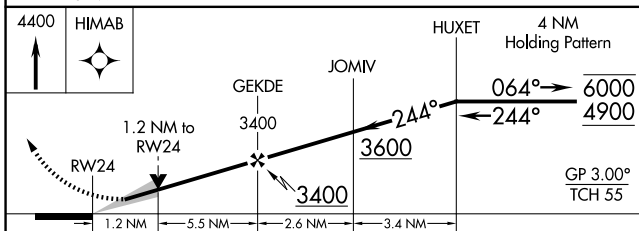
**MISSED APPROACH:**  
 Climb to 4400 direct HIMAB and hold, continue climb-in-hold to 4400.

D-ATIS <b>127.65</b>	NEW YORK CENTER <b>134.8 338.3</b>	<b>UNIVERSITY PARK TOWER *</b> <b>128.475</b> (CTAF) <b>0</b>	GND CON <b>125.725</b>	CLNC DEL <b>125.725</b>	CLNC DEL <b>118.55</b> (When twr closed)	UNICOM <b>122.95</b>
-------------------------	---------------------------------------	--	---------------------------	----------------------------	--	-------------------------

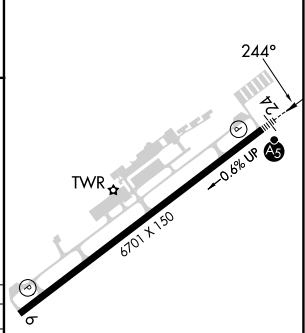


NE-4, 11 JUN 2026 to 09 JUL 2026

NE-4, 11 JUN 2026 to 09 JUL 2026



ELEV 1231	<b>D</b>	TDZE 1218
-----------	----------	-----------



CATEGORY	A	B	C	D
LPV DA*		1418/24	200 (200-½)	
LNAV/VNAV DA		1619/40	401 (400-¾)	
LNAV MDA	1640/24	422 (500-½)	1640/40	422 (500-¾)
CIRCLING	1640-1 409 (500-1)	1700-1 469 (500-1)	1980-2¼ 749 (800-2¼)	2560-3 1329 (1400-3)

REIL Rwy 6 **0**  
 HIRL Rwy 6-24 **0**