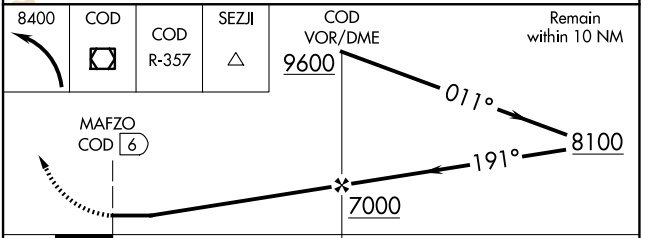
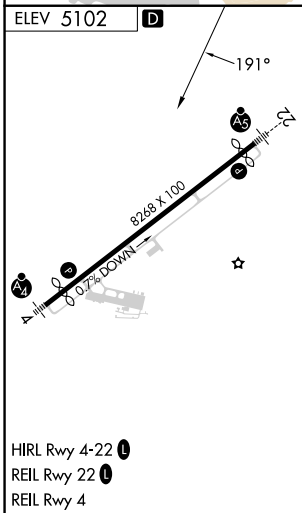
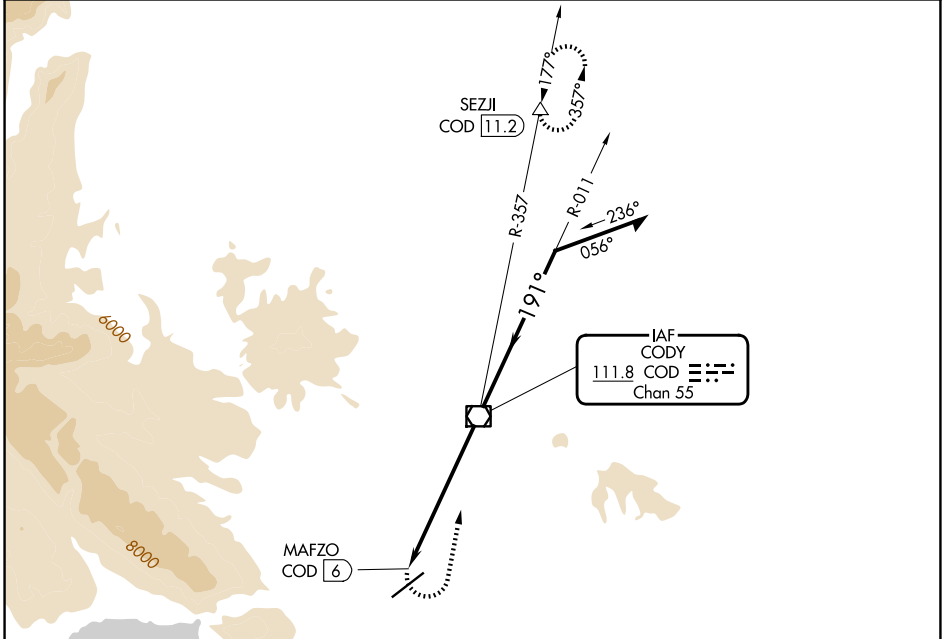


VOR/DME COD <b>111.8</b> Chan <b>55</b>	APP CRS <b>191°</b>	Rwy Ldg TDZE Apt Elev <b>5102</b>	N/A N/A
---	------------------------	--------------------------------------	------------

**VOR-A**  
YELLOWSTONE RGNL (COD)

DME required.		MISSED APPROACH: Climbing left turn to 8400 direct COD VOR/DME and on COD VOR/DME R-357 to SEZJI/COD 11.2 DME and hold.

AWOS-3PT <b>135.075</b>	SALT LAKE CENTER <b>127.75 351.9</b>	UNICOM <b>122.8 (CTAF)</b>
----------------------------	---	-------------------------------



CATEGORY	A	B	C	D
CIRCLING	5780-1 678 (700-1)	5920-1¼ 818 (900-1¼)	5940-2½ 838 (900-2½)	7000-3 1898 (1900-3)

NW-1, 11 JUN 2026 to 09 JUL 2026

NW-1, 11 JUN 2026 to 09 JUL 2026