

LOC I-HSP <b>108.7</b>	APP CRS <b>247°</b>	Rwy Ldg <b>5600</b> TDZE <b>3773</b> Apt Elev <b>3793</b>
---------------------------	------------------------	---

# ILS or LOC RWY 25

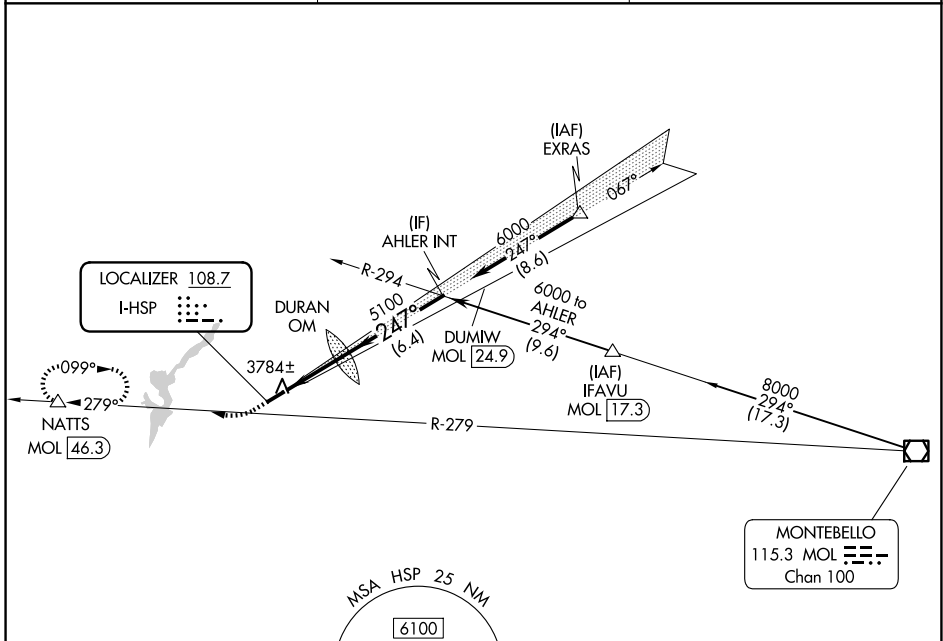
INGALLS FLD (HSP)

DME required.

▼ Circling to Rwy 7 NA at night.  
▲ NA Circling NA southeast of Rwy 7-25.

MISSED APPROACH: Climb to 4360, then climbing right turn to 6200 on heading 270° and MOL R-279 to NATTS/MOL 46.3 DME and hold. (DME required).

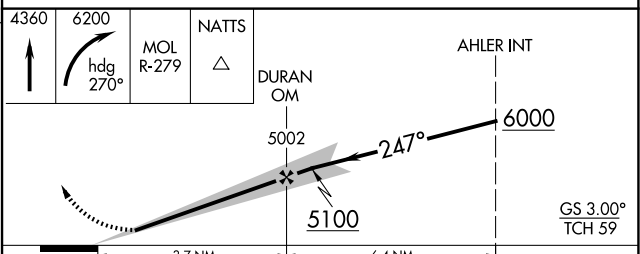
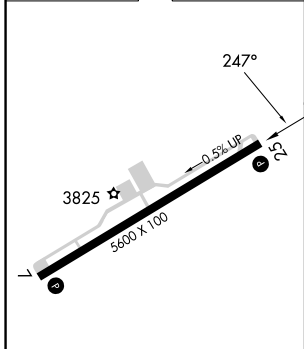
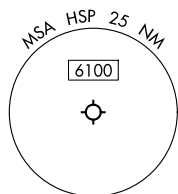
AWOS-3 <b>118.8</b>	WASHINGTON CENTER <b>134.4 353.9</b>	UNICOM <b>123.0 (CTAF) 0</b>
------------------------	---	---------------------------------



NE-3, 11 JUN 2026 to 09 JUL 2026

NE-3, 11 JUN 2026 to 09 JUL 2026

ELEV <b>3793</b>	TDZE <b>3773</b>
------------------	------------------



REIL Rwy 25 <b>0</b>					
HIRL Rwy 7-25 <b>0</b>					
FAF to MAP 3.7 NM					
Knots	60	90	120	150	180
Min:Sec	3:42	2:28	1:51	1:29	1:14
CATEGORY	A	B	C	D	
S-ILS 25	4073- <sup>7</sup> / <sub>8</sub>		300 (300- <sup>7</sup> / <sub>8</sub> )		
S-LOC 25	4240-1	467 (500-1)	4240-1 <sup>3</sup> / <sub>8</sub>	467 (500-1 <sup>3</sup> / <sub>8</sub> )	
CIRCLING	4440-1 647 (700-1)	4480-1 687 (700-1)	4480-2 687 (700-2)	4480-2 <sup>1</sup> / <sub>4</sub> 687 (700-2 <sup>1</sup> / <sub>4</sub> )	