

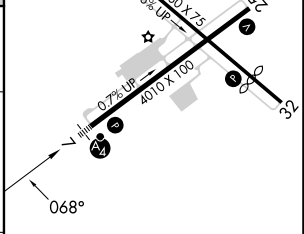
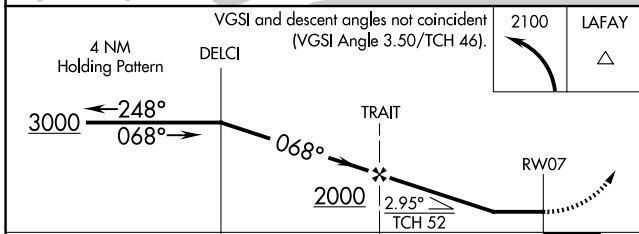
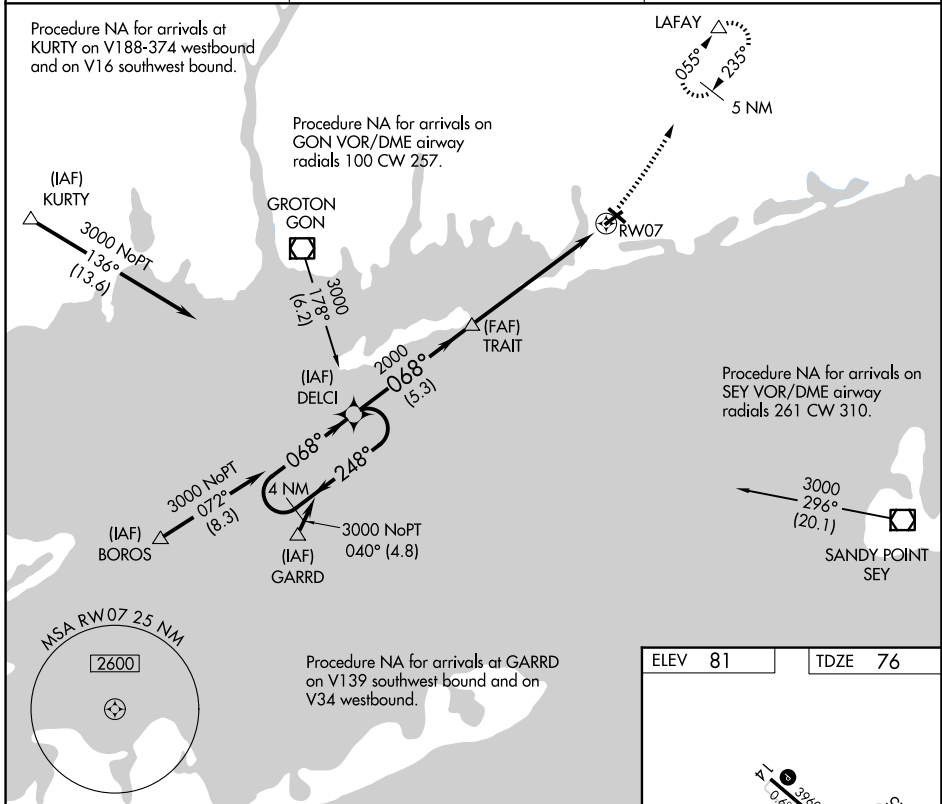
APP CRS 068°	Rwy Ldg TDZE Apt Elev	4010 76 81
------------------------	-----------------------------	---------------------------------------

RNAV (GPS) RWY 7

WESTERLY STATE (WST)

<p>▼ Inoperative table does not apply. DME/DME RNP-0.3 NA. ▲ NA Rwy 7 Straight-in and Circling and Circling Rwy 14 and 32 NA at night.</p>	<p>MALSF </p>	<p>MISSED APPROACH: Climbing left turn to 2100 direct LAFAY and hold.</p>
---	---------------------------	--

<p>ASOS 132.375</p>	<p>PROVIDENCE APP CON ★ 119.45 319.2</p>	<p>UNICOM 123.0 (CTAF) 0</p>
--------------------------------	---	---



CATEGORY	A	B	C	D
LNVA MDA	520-1	444 (500-1)	520-1½ 444 (500-1½)	520-1½ 444 (500-1½)
CIRCLING	580-1	499 (500-1)	720-1¾ 639 (700-1¾)	760-2¼ 679 (700-2¼)

REIL Rwy 14, 25 and 32 **0**
MRL Rwy 7-25 and 14-32 **0**

NE-1, 11 JUN 2026 to 09 JUL 2026

NE-1, 11 JUN 2026 to 09 JUL 2026