

POTOMAC DEP CON
120.45 306.925
AWOS-3
124.85
CLNC DEL
126.15
UNICOM
122.975 (CTAF)

**TOP ALTITUDE:
3000**

TAKEOFF MINIMUMS

Rwy 14: Standard
Rwy 32: Standard with minimum climb
of 240' per NM to 1900.



DEPARTURE ROUTE DESCRIPTION

TAKEOFF RUNWAY 14: Climb on heading 144° or as assigned by ATC.
Expect RADAR vectors to HAFNR, then on track 225° to JDUBB, thence. . . .

TAKEOFF RUNWAY 32: Climb on heading 324° or as assigned by ATC.
Expect RADAR vectors to HAFNR, then on track 225° to JDUBB, thence. . . .

. . . . on assigned transition. Maintain 3000. Expect clearance
to filed altitude within ten (10) minutes after departure.

MELTN TRANSITION (JDUBB4.MELTN)

RRSIN TRANSITION (JDUBB4.RRSIN)

P-56B

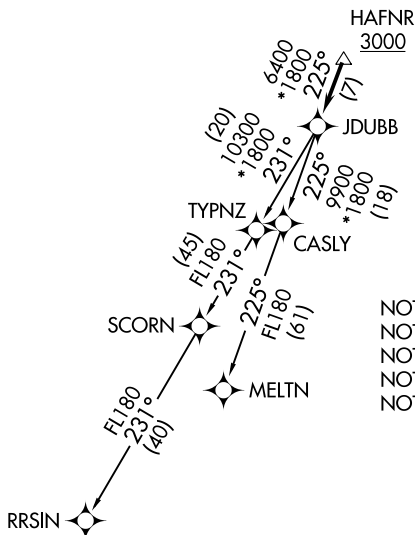


P-56A



NE-3, 11 JUN 2026 to 09 JUL 2026

NE-3, 11 JUN 2026 to 09 JUL 2026



- NOTE: RNAV 1.
- NOTE: RADAR required.
- NOTE: DME/DME/IRU or GPS required.
- NOTE: Turbo-jets only.
- NOTE: Takeoff Rwy 32 requires a climb to 2500 on heading 341° before proceeding on the ATC assigned heading for obstacle avoidance.

NOTE: Chart not to scale.