

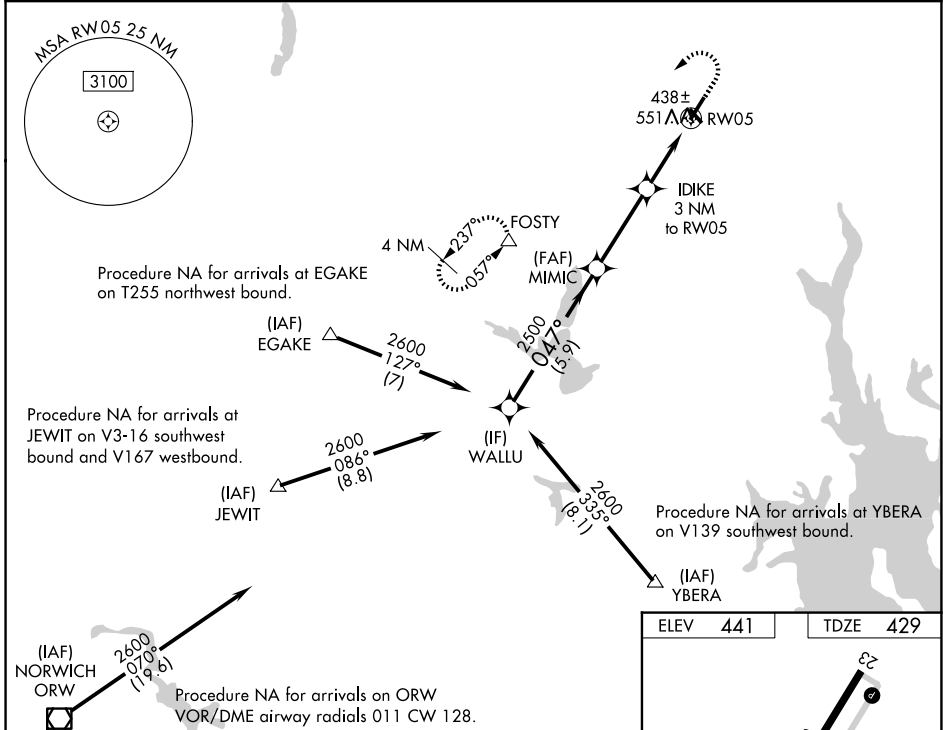
WAAS CH <b>50231</b> <b>W05A</b>	APP CRS <b>047°</b>	Rwy Ldg TDZE Apt Elev	<b>5000</b> <b>429</b> <b>441</b>
--	------------------------	-----------------------------	---

# RNAV (GPS) RWY 5

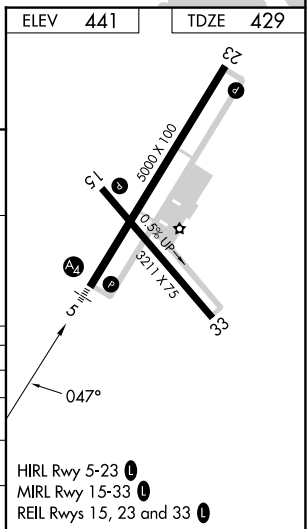
NORTH CENTRAL STATE (SFZ)

RNP APCH - GPS.		MALS	MISSED APPROACH: Climb to 2000 then climbing left turn to 2500 direct FOSTY and hold.
<p>⚠ Circling Rwy 15, 33 NA at night. For inoperative MALS, increase LPV all Cats visibility to 3/8 mile. For inop ALS, increase LPV all Cats visibility to 3/8 SM and LNAV/VNAV all Cats visibility to 1 1/8 SM. For uncompensated Baro-VNAV systems, LNAV/VNAV NA below -15°C or above 54°C.</p>			

AWOS-3PT <b>120.775</b>	PROVIDENCE APP CON * <b>123.675 244.875</b>	CLNC DEL <b>124.35</b>	UNICOM <b>123.075 (CTAF) 0</b>
----------------------------	--	---------------------------	-----------------------------------



WALLU		MIMIC		IDIKE		FOSTY	
2600		2500		2500		2500	
0.47°		0.47°		1.1 NM to RW05		△	
GP 3.00°		*1420		3.4 NM			
TCH 52				1.9 NM			
				1.1			
5.9 NM		3.4 NM		1.9 NM		1.1	
CATEGORY	A	B	C	D			
LPV DA	700-3/4		271 (300-3/4)		NA		
LNAV/VNAV DA	835-1		406 (400-1)		NA		
LNAV MDA	820-3/4		391 (400-3/4)		820-7/8		NA
					391 (400-7/8)		
CIRCLING	900-1		459 (500-1)		900-1 1/2		NA
					459 (500-1 1/2)		



NE-1, 11 JUN 2026 to 09 JUL 2026

NE-1, 11 JUN 2026 to 09 JUL 2026