

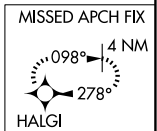
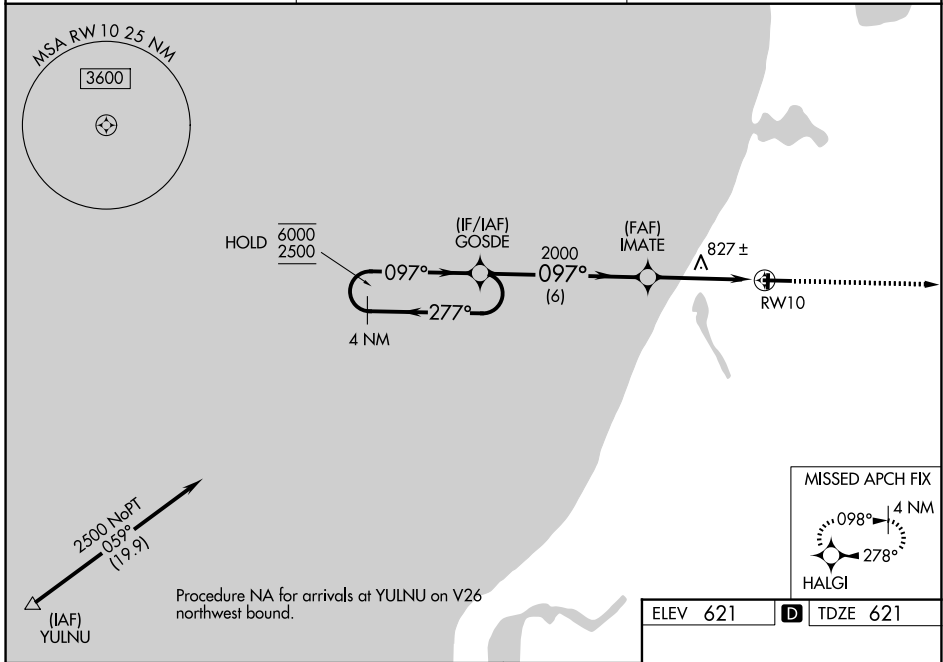
WAAS CH 60933 W10A	APP CRS 097°	Rwy Ldg 5501 TDZE 621 Apt Elev 621
--	------------------------	---

RNAV (GPS) RWY 10

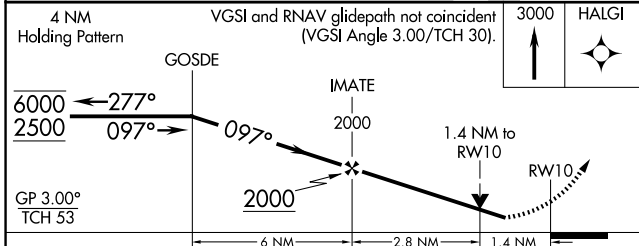
MANISTEE COUNTY/BLACKER (MBL)

RNP APCH - GPS.	MISSED APPROACH: Climb to 3000 direct HALGI and hold.
<p>⚠ Circling Rwy 1, 19 NA at night. Rwy 10 helicopter visibility reduction below 3/4 SM NA. For uncompensated Baro-VNAV systems, LNAV/VNAV NA below -16°C or above 54°C.</p>	

AWOS-3PT 118.825	MINNEAPOLIS CENTER 120.85 322.35	UNICOM 122.8 (CTAF) Ⓛ
----------------------------	--	--



ELEV 621	D TDZE 621
----------	-------------------



<p>HIRL Rwy 10-28 Ⓛ</p> <p>MIRL Rwy 1-19 Ⓛ</p> <p>REIL Rwy 10 Ⓛ</p>

EC-1, 11 JUN 2026 to 09 JUL 2026

EC-1, 11 JUN 2026 to 09 JUL 2026