

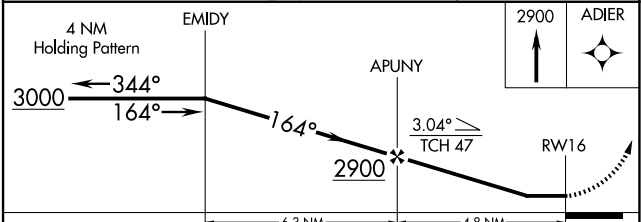
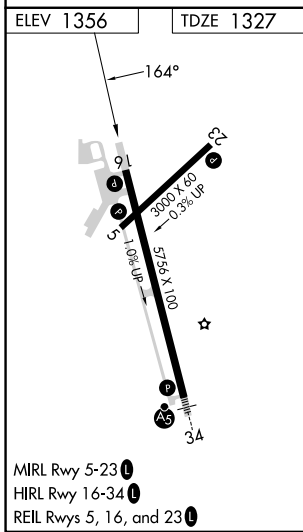
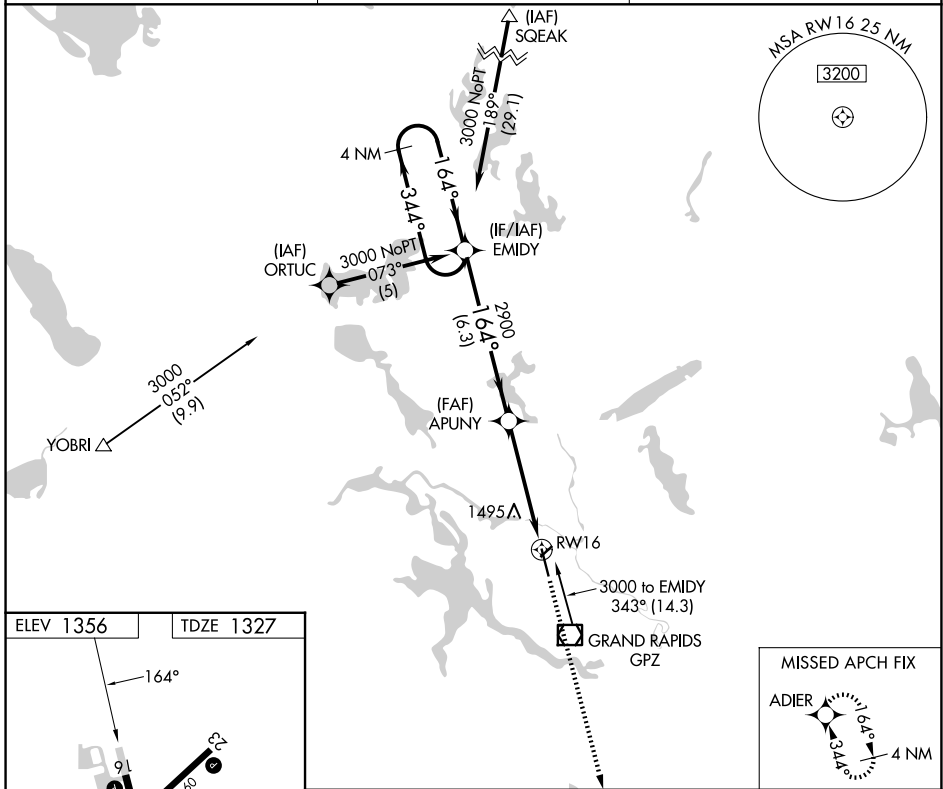
APP CRS	Rwy Ldg	<b>5756</b>
<b>164°</b>	TDZE	<b>1327</b>
	Apt Elev	<b>1356</b>

# RNAV (GPS) RWY 16

GRAND RAPIDS/ITASCA COUNTY-GORDON NEWSTROM FLD (GPZ)

RNP APCH.	MISSED APPROACH: Climb to 2900 direct ADIER and hold.
<p><b>▼</b> Circling Rwy 5 NA at night. Circling NA for Cat D east of Rwy 16-34.</p> <p><b>▲</b> When local altimeter setting not received, use Hibbing altimeter setting and increase all MDAs 80 feet, increase LNAV Cat C visibility 1/8 SM and Circling Cats C/D visibility 1/4 SM.</p>	

AWOS-3PT <b>118.425</b>	MINNEAPOLIS CENTER <b>127.9 281.45</b>	UNICOM <b>122.8 (CTAF) 0</b>
----------------------------	---	---------------------------------



CATEGORY	A	B	C	D
LNAV MDA	1760-1	433 (500-1)	1760-1¼ 433 (500-1¼)	1760-1½ 433 (500-1½)
CIRCLING	1900-1	544 (600-1)	1900-1½ 544 (600-1½)	2000-2 644 (700-2)

NC-1, 11 JUN 2026 to 09 JUL 2026

NC-1, 11 JUN 2026 to 09 JUL 2026