

WAAS CH 56206 W17A	APP CRS 175°	Rwy Ldg 8006 TDZE 213 Apt Elev 214
--	------------------------	---

RNAV (GPS) RWY 17

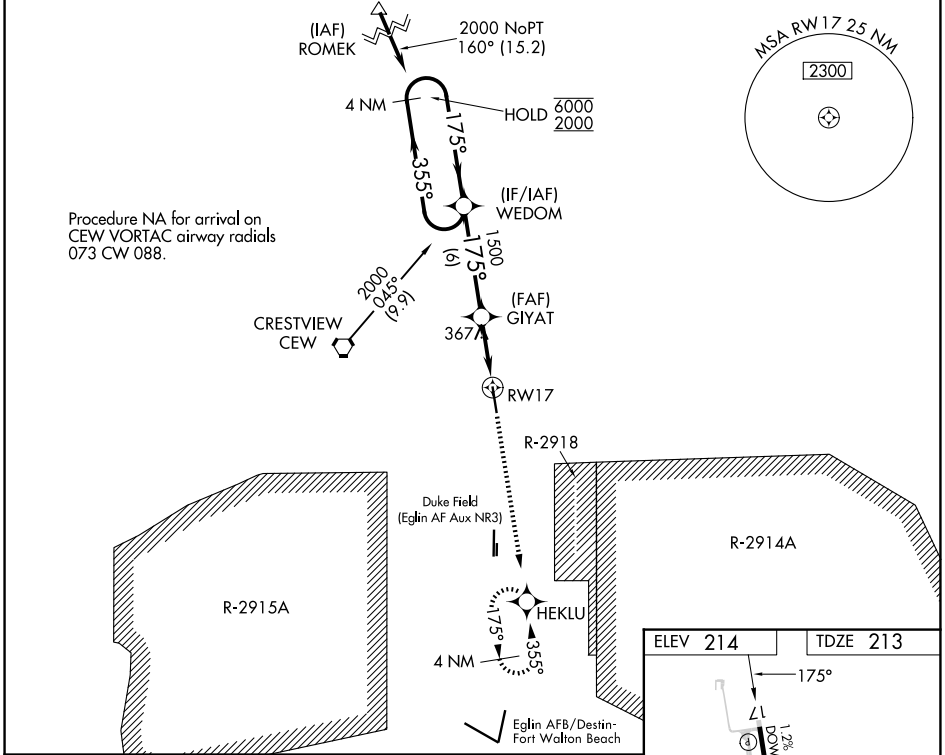
BOB SIKES (CEW)

RNP APCH.

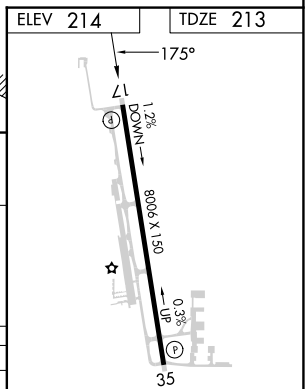
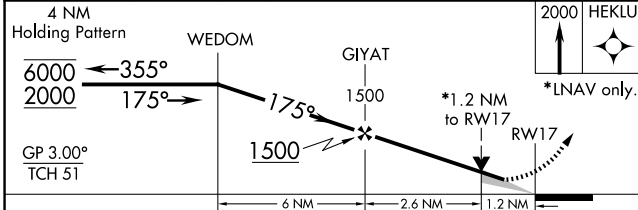
⚠ Circling NA for Cat D west of Rwy 17-35. Baro-VNAV and VDP NA when using EGLIN AFB altimeter setting. When local altimeter setting not received, use Eglin AFB altimeter setting and increase LPV DA to 529, LNAV/VNAV DA to 699 and all MDA 60 feet. For uncompensated Baro-VNAV systems, LNAV/VNAV NA below -5°C or above 54°C.

MISSED APPROACH: Climb to 2000 direct HEKLU and hold.

ASOS 119.275	EGLIN APP CON 124.05 284.65	UNICOM 123.075 (CTAF) 0
------------------------	---------------------------------------	-----------------------------------



Procedure NA for arrival on CEW VORTAC airway radials 073 CW 088.



CATEGORY	A	B	C	D
LPV DA	470-1 257 (300-1)			
LNAV/VNAV DA	640-1½ 427 (500-1½)			
LNAV MDA	660-1 447 (500-1)	660-1¼ 447 (500-1¼)	660-1½ 447 (500-1½)	660-1¾ 447 (500-1¾)
CIRCLING	700-1 486 (500-1)	820-1¾ 606 (700-1¾)	840-2 626 (700-2)	

HIRL Rwy 17-35 0

SE-3, 11 JUN 2026 to 09 JUL 2026

SE-3, 11 JUN 2026 to 09 JUL 2026