

WAAS CH 40208 W35A	APP CRS 355°	Rwy Ldg 8006 TDZE 163 Apt Elev 214
--	------------------------	--

RNAV (GPS) RWY 35

BOB SIKES (CEW)

RNP APCH.

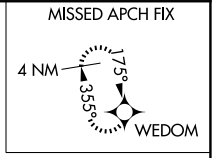
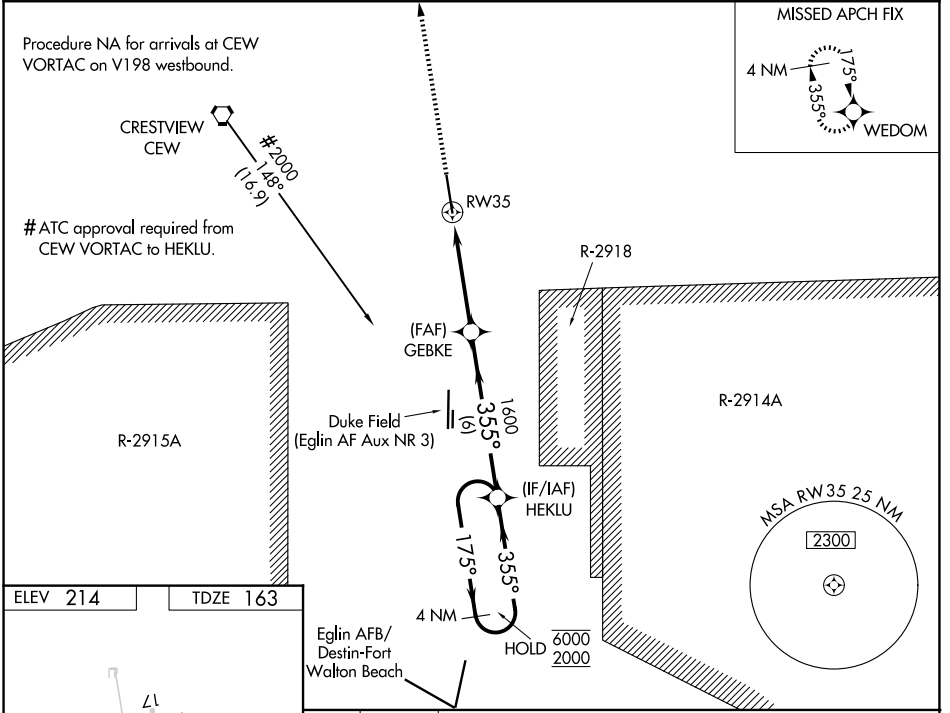
⚠ Baro-VNAV and VDP NA when using Eglin AFB altimeter setting. Rwy 35 helicopter visibility reduction below $\frac{3}{4}$ SM NA. For uncompensated Baro-VNAV systems, LNAV/VNAV NA below -5°C or above 54°C. When local altimeter setting not received, use Eglin AFB altimeter setting and increase LPV DA to 509, LNAV/VNAV DA to 550, and all MDA 60 feet, increase LNAV Cat C/D visibility $\frac{1}{2}$ SM.

MISSED APPROACH: Climb to 2000 direct WEDOM and hold.

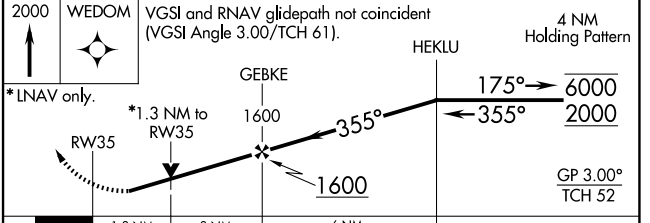
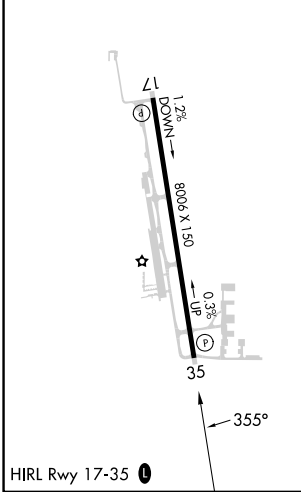
ASOS
119.275

EGLIN APP CON
124.05 284.65

UNICOM
123.075 (CTAF) **0**



ELEV 214 TDZE 163



CATEGORY	A	B	C	D
LPV DA	450-1 287 (300-1)			
LNAV/VNAV DA	491-1 $\frac{1}{4}$ 328 (300-1 $\frac{1}{4}$)			
LNAV MDA	640-1 477 (500-1)		640-1 $\frac{3}{8}$ 477 (500-1 $\frac{3}{8}$)	

SE-3, 11 JUN 2026 to 09 JUL 2026

SE-3, 11 JUN 2026 to 09 JUL 2026