

WAAS CH <b>65806</b> <b>W23A</b>	APP CRS <b>230°</b>	Rwy Ldg TDZE <b>6200</b> <b>262</b> Apt Elev <b>262</b>
--	------------------------	--

# RNAV (GPS) RWY 23

JONESBORO MUNI (JBR)

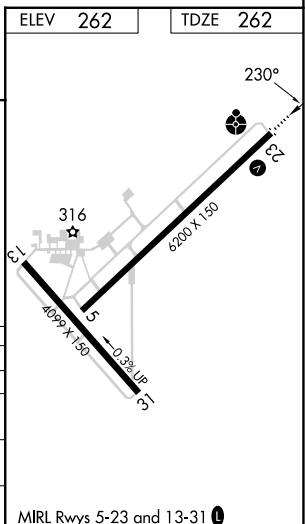
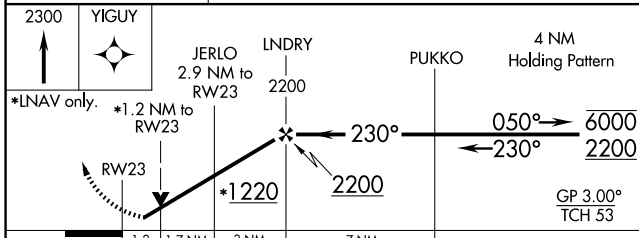
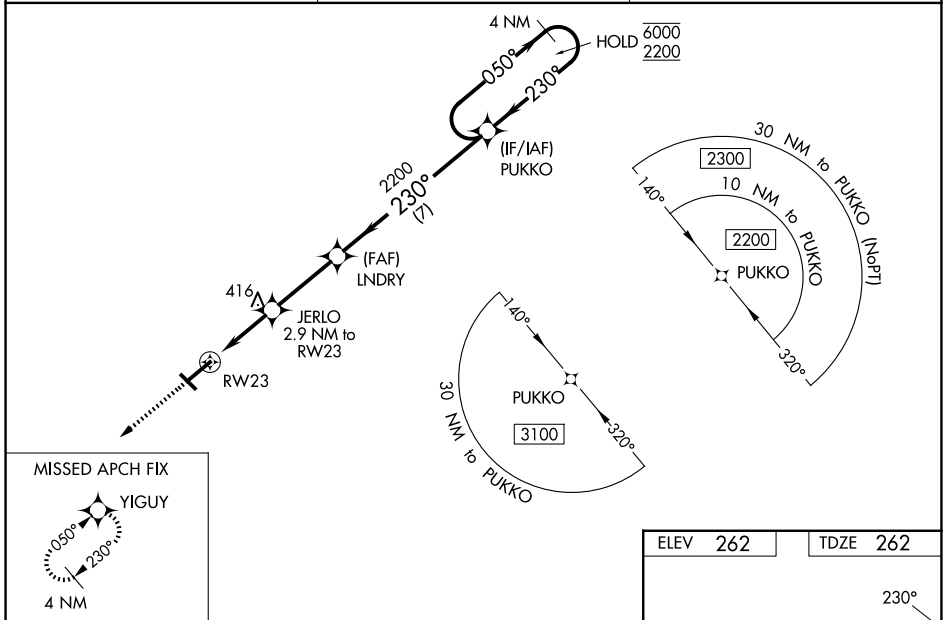
RNP APCH.

⚠ Circling NA northwest of Rwy 5-23. Circling Rwy 31 NA at night. Baro-VNAV and VDP NA when using Walnut Ridge altimeter setting. Rwy 23 helicopter visibility reduction below 3/4 SM NA. For uncompensated Baro-VNAV systems, LNAV/VNAV NA below -12°C or above 54°C. For inop ALS, increase LPV Cat A/B visibility to 1/2 SM. Inop table does not apply to LNAV/VNAV. For inop ALS when using Walnut Ridge altimeter setting, increase LPV Cat A/B visibility to 1 SM. When using Walnut Ridge altimeter setting, inop table does not apply to LNAV/VNAV. When local altimeter setting not received, use Walnut Ridge altimeter setting: increase LPV DA to 600 feet, LNAV/VNAV DA to 630 feet and all visibilities 1/2 SM; increase all MDAs 60 feet and LNAV Cat C/D and Circling Cat C visibility 1/4 SM.

ODALS

MISSED APPROACH:  
Climb to 2300 direct YIGUY and hold.

ASOS <b>118.525</b>	MEMPHIS CENTER <b>120.075 289.4</b>	UNICOM <b>123.0</b> (CTAF)
------------------------	--	-------------------------------



CATEGORY	A	B	C	D
LPV DA	546-3/4 284 (300-3/4)			
LNAV/VNAV DA	576-7/8 314 (400-2/3)			
LNAV MDA	680-3/4 418 (500-3/4)		680-1 418 (500-1)	
CIRCLING	740-1 478 (500-1)		820-1 1/2 558 (600-1 1/2)	1080-2 3/4 818 (900-2 3/4)

MIRL Rwy 5-23 and 13-31

SC-1, 11 JUN 2026 to 09 JUL 2026

SC-1, 11 JUN 2026 to 09 JUL 2026