

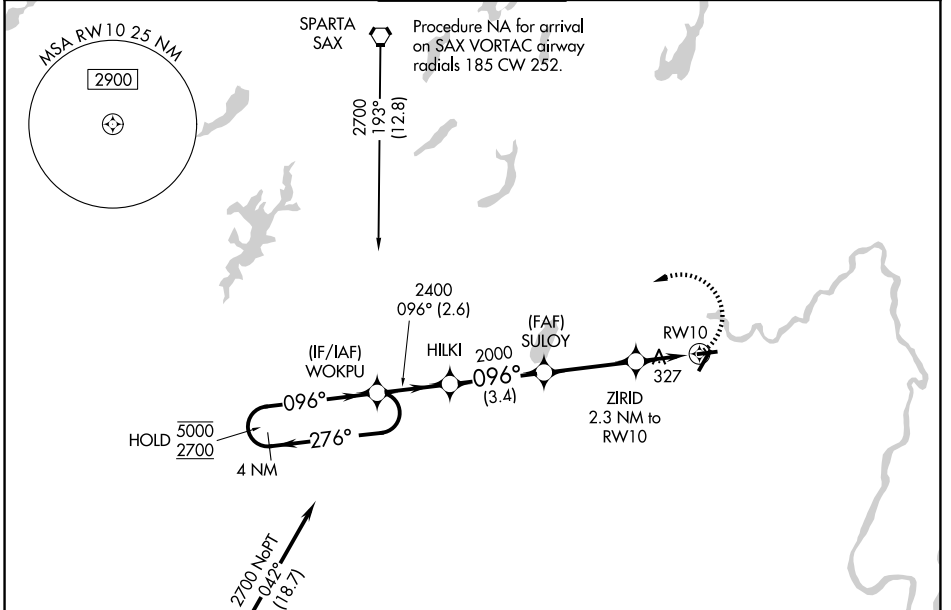
WAAS CH 81922 W10A	APP CRS 096°	Rwy Ldg TDZE Apt Elev	2822 172 172
--	------------------------	-----------------------------	---

RNAV (GPS) RWY 10

ESSEX COUNTY (CDW)

RNP APCH.		MISSED APPROACH: Climbing left turn to 2700 direct WOKPU and hold.		
▽	Procedure NA at night.			
▲	Rwy 10 helicopter visibility reduction below 1 SM NA.			

ATIS 135.5	NEWARK APP CON 127.6 379.9	CALDWELL TOWER ★ 119.8 (CTAF) 0	GND CON 121.9	UNICOM 122.95
----------------------	--------------------------------------	---	-------------------------	-------------------------



4 NM Holding Pattern WOKPU		Visual Segment - Obstacles.		2700 WOKPU			
5000 ← 276°		HILKI					
2700 → 096°		SULYO					
2400		ZIRID 2.3 NM to RW10					
2000		RW10					
940							
← 2.6 NM		← 3.4 NM		← 3.3 NM		← 2.3 NM	
CATEGORY	A	B	C	D			
LP MDA	600-1	428 (500-1)	600-1¼	428 (500-1¼)			
LNAV MDA	740-1	568 (600-1)	740-1½	568 (600-1½)			
CIRCLING	960-1 788 (800-1)	1040-1¼ 868 (900-1¼)	1100-2¾ 928 (1000-2¾)	1400-3 1228 (1300-3)			

REIL Rwy 22 0
MIRL Rwy 10-28 0
HIRL Rwy 4-22 0

NE-2, 11 JUN 2026 to 09 JUL 2026

NE-2, 11 JUN 2026 to 09 JUL 2026