

WAAS CH 58022 W22A	APP CRS 223°	Rwy Ldg TDZE Apt Elev	4042 172 172
--	------------------------	-----------------------------	---

RNAV (GPS) RWY 22

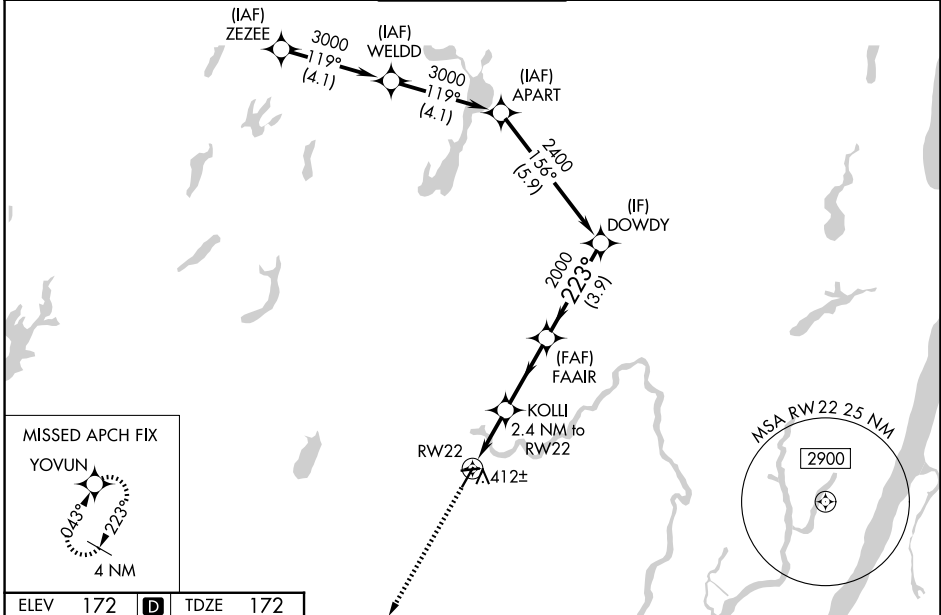
ESSEX COUNTY (CDW)

RNP APCH - GPS.

⚠ Rwy 22 helicopter visibility reduction below 1 SM NA.
 For uncompensated Baro-VNAV systems,
 LNAV/VNAV NA below -1.5°C or above 54°C.
 Circling Rwy 10, 28 NA at night. Circling NA E of Rwy 4-22.

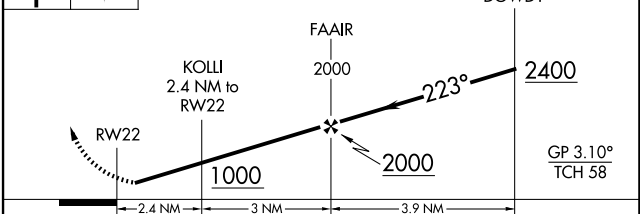
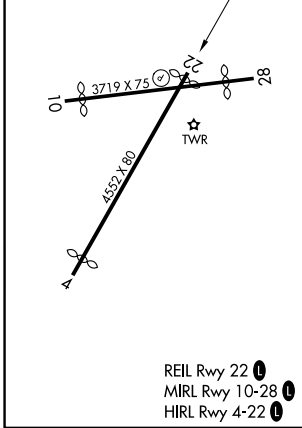
MISSED APPROACH:
 Climb to 2000 direct
 YOYUN and hold.

ATIS 135.5	NEWARK APP CON 127.6 379.9	CALDWELL TOWER ★ 119.8 (CTAF) 0	GND CON 121.9	UNICOM 122.95
----------------------	--------------------------------------	--	-------------------------	-------------------------



ELEV 172	D	TDZE 172
----------	----------	----------

2000 YOYUN
 VGS1 and descent angles not coincident
 (VGS1 Angle 3.00/TCH 42).



CATEGORY	A	B	C	D
LPV DA	459-1	287 (300-1)		NA
LNAV/VNAV DA	610-1 ³ / ₈	438 (500-1 ³ / ₈)		NA
LNAV MDA	680-1	508 (600-1)	680-1 ³ / ₈ 508 (600-1 ³ / ₈)	NA
CIRCLING	960-1 788 (800-1)	1040-2 868 (900-2)	1100-2 ³ / ₄ 928 (1000-2 ³ / ₄)	NA

NE-2, 11 JUN 2026 to 09 JUL 2026

NE-2, 11 JUN 2026 to 09 JUL 2026