

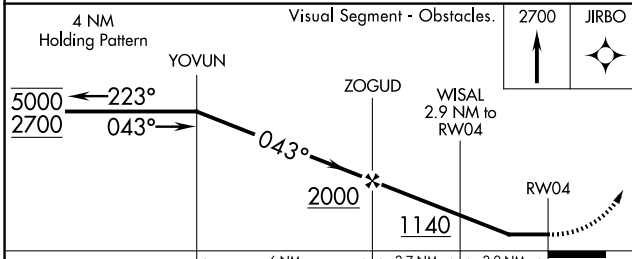
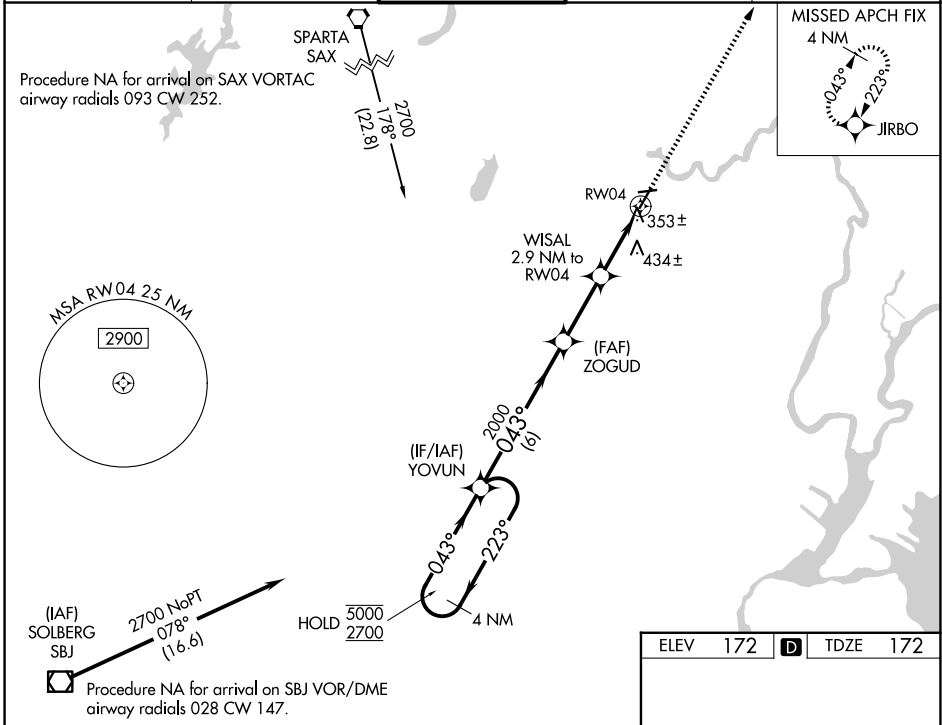
WAAS CH 42622 W04A	APP CRS 043°	Rwy Ldg 3977 TDZE 172 Apt Elev 172
--	------------------------	---

RNAV (GPS) RWY 4

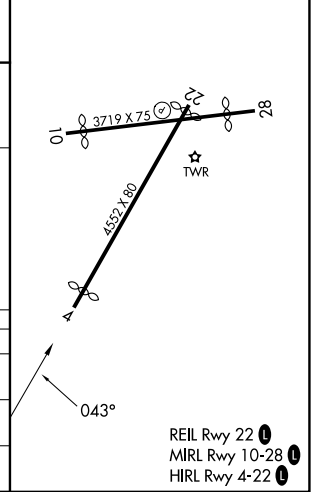
ESSEX COUNTY (CDW)

RNP APCH - GPS.		MISSED APPROACH: Climb to 2700 direct JIRBO and hold.		
	Rwy 4 helicopter visibility reduction below 1 SM NA. Circling Rwy 10, 28 NA at night. Circling NA E of Rwy 4-22.			

ATIS 135.5	NEWARK APP CON 127.6 379.9	CALDWELL TOWER ★ 119.8 (CTAF) 0	GND CON 121.9	UNICOM 122.95
----------------------	--------------------------------------	---	-------------------------	-------------------------



ELEV 172		TDZE 172
----------	--	----------



CATEGORY	A	B	C	D
LP MDA	620-1	448 (500-1)	620-1 3/8	448 (500-1 3/8)
LNNAV MDA	660-1	488 (500-1)	660-1 3/8	488 (500-1 3/8)
CIRCLING	960-1 788 (800-1)	1040-1 1/4 868 (900-1 1/4)	1100-2 3/4 928 (1000-2 3/4)	1400-3 1228 (1300-3)

REIL Rwy 22
MIRL Rwy 10-28
HIRL Rwy 4-22

NE-2, 11 JUN 2026 to 09 JUL 2026

NE-2, 11 JUN 2026 to 09 JUL 2026