

WAAS CH <b>97539</b> <b>W29A</b>	APP CRS <b>286°</b>	Rwy Idg TDZE <b>1419</b> Apt Elev <b>1419</b>	<b>5502</b>
--	------------------------	---	-------------

# RNAV (GPS) RWY 29

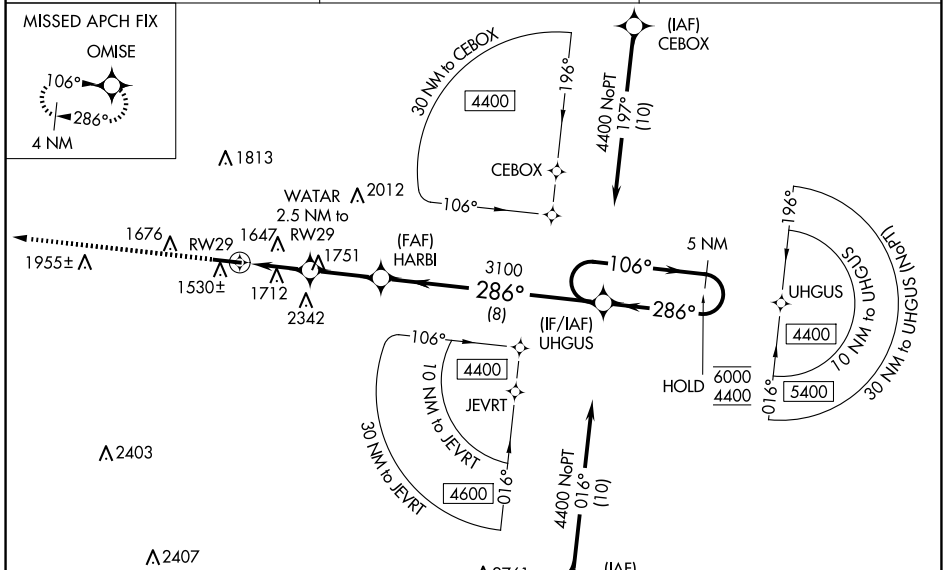
INDIANA COUNTY/JIMMY STEWART FLD (IDI)

RNP APCH - GPS

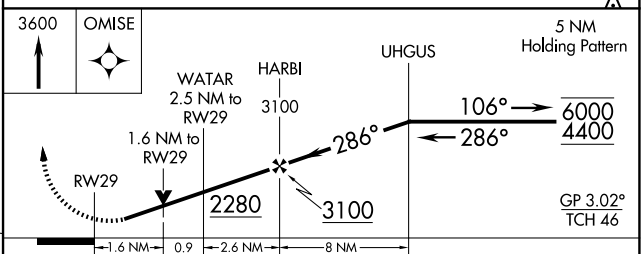
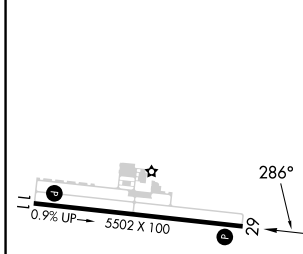
**▼** Baro-VNAV and VDP NA when using Allegheny County altimeter setting. For uncompensated Baro-VNAV systems, LNAV/VNAV NA below -17°C or above 54°C. Rwy 29 helicopter visibility reduction below 3/4 SM NA. When local altimeter setting not received, use Allegheny County altimeter setting and increase LPV DA to 1874 feet and all visibilities 3/4 SM. Increase LNAV/VNAV DA to 2099 feet and all visibilities 1/4 SM. Increase all MDAs 120 feet and LNAV visibility Cat C/D 3/4 SM, and Circling visibility Cat A/B 1/4 SM.

**MISSED APPROACH:**  
Climb to 3600 direct OMISE and hold.

AWOS-3 <b>126.625</b>	JOHNSTOWN APP CON * <b>121.2 299.2</b>	UNICOM <b>122.8 (CTAF) 0</b>
--------------------------	---	---------------------------------



ELEV <b>1419</b>	TDZE <b>1419</b>
------------------	------------------



CATEGORY	A	B	C	D
LPV DA		1755-1	336 (400-1)	
LNAV/VNAV DA		1980-1 1/2	561 (600-1 1/2)	
LNAV MDA	1980-1	561 (600-1)	1980-1 1/2	561 (600-1 1/2)
CIRCLING	2120-1 701 (800-1)	2180-1 761 (800-1)	2660-3	1241 (1300-3)

REIL Rwy 11 **0**  
HIRL Rwy 11-29 **0**

NE-4, 11 JUN 2026 to 09 JUL 2026

NE-4, 11 JUN 2026 to 09 JUL 2026