

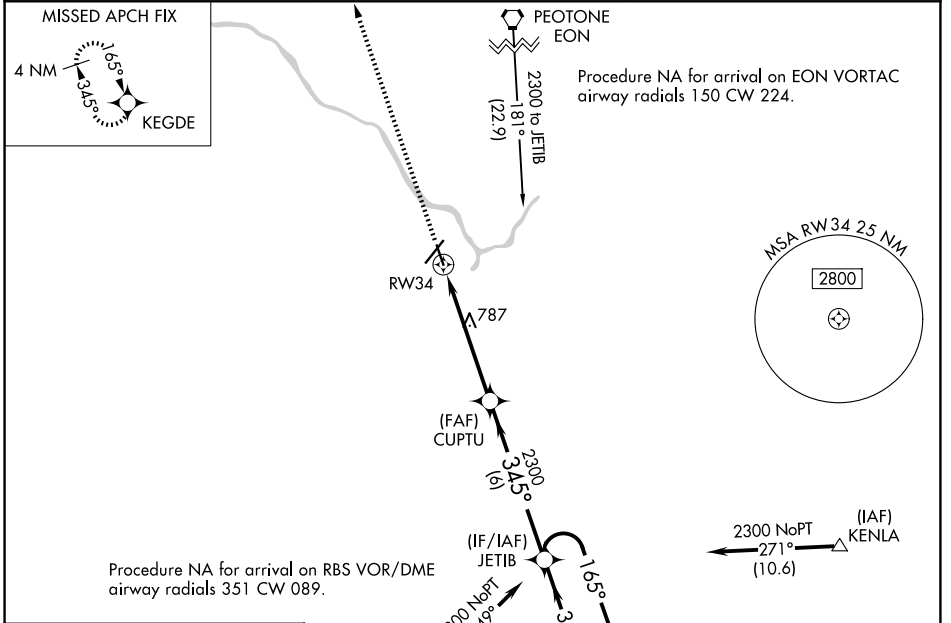
WAAS CH 86731 W34A	APP CRS 345°	Rwy Ldg TDZE 620 Apt Elev 630	4398
--	------------------------	---	-------------

RNAV (GPS) RWY 34

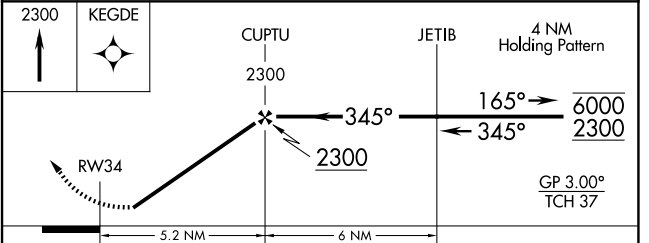
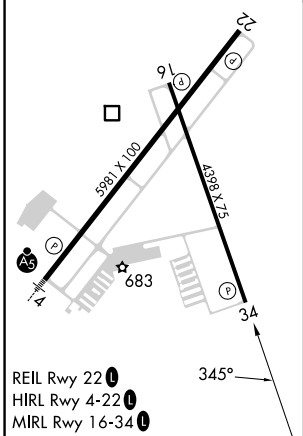
GREATER KANKAKEE (IKK)

RNP APCH.	MISSED APPROACH: Climb to 2300 direct KEGDE and hold.
<p>▼ Rwy 34 helicopter visibility reduction below 1 SM NA. For uncompensated Baro-VNAV systems, LNAV/VNAV NA below -16° C or above 54° C. ▲ Straight-in and Circling Rwy 34 NA at night, Circling Rwy 16 NA at night.</p>	

AWOS-3 128.475	CHICAGO CENTER 132.5 284.7	UNICOM 123.0 (CTAF)
--------------------------	--------------------------------------	-------------------------------



ELEV 630	TDZE 620
----------	----------



CATEGORY	A	B	C	D
LPV DA		870-1	250 (300-1)	
LNAV/VNAV DA		885-1	265 (300-1)	
LNAV MDA	1040-1	420 (500-1)	1040-1½ 420 (500-1½)	
CIRCLING	1080-1 450 (500-1)	1100-1 470 (500-1)	1140-1½ 510 (600-1½)	1340-2½ 710 (800-2½)

EC-3, 11 JUN 2026 to 09 JUL 2026

EC-3, 11 JUN 2026 to 09 JUL 2026