

WAAS CH 97719 W09A	APP CRS 092°	Rwy Ldg TDZE Apt Elev	5100 845 850
--	------------------------	-----------------------------	---

RNAV (GPS) RWY 9

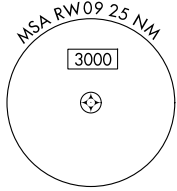
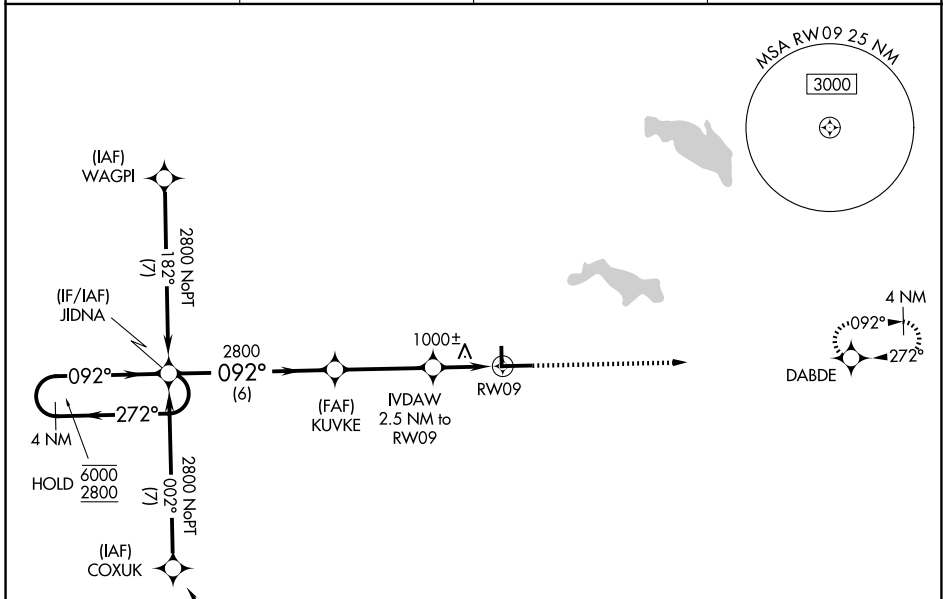
WARSAW MUNI (ASW)

RNP APCH - GPS.

⚠ For uncompensated Baro-VNAV systems, LNAV/VNAV NA below -16°C or above 54°C.
Rwy 9 helicopter visibility reduction below 3/4 SM NA. Circling Rwy 18, 36 NA at night.

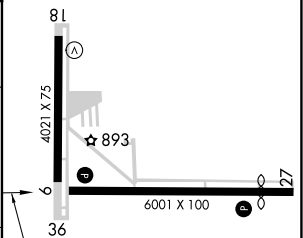
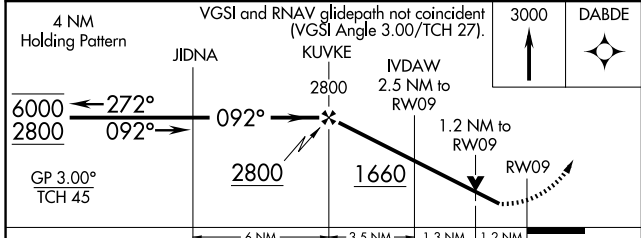
MISSED APPROACH:
Climb to 3000 direct
DABDE and hold.

AWOS-3 121.125	FORT WAYNE APP CON 127.2 284.6	CLNC DEL 134.05	UNICOM 122.7 (CTAF) 0
--------------------------	--	---------------------------	---------------------------------



Procedure NA for arrivals at CLEFT on V38 and T215 eastbound.

ELEV 850	D TDZE 845
----------	-------------------



CATEGORY	A	B	C	D
LPV DA		1095-3/4	250 (300-3/4)	
LNAV/VNAV DA		1295-1 3/8	450 (500-1 3/8)	
LNAV MDA	1260-1	415 (500-1)	1260-1 1/8	415 (500-1 1/8)
CIRCLING	1340-1	490 (500-1)	1480-1 3/4 630 (700-1 3/4)	1480-2 630 (700-2)

HIRL Rwy 9-27 **0**
MIRL Rwy 18-36 **0**
REIL Rwy 9 and 27 **0**

EC-2, 11 JUN 2026 to 09 JUL 2026

EC-2, 11 JUN 2026 to 09 JUL 2026