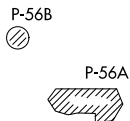


JDUBB FOUR DEPARTURE (RNAV)

AWOS-3
125.225
CLNC DEL
120.5
118.55 (When twr closed)
GND CON
120.5
LEESBURG TOWER ★
127.5 (CTAF)
UNICOM
122.975
POTOMAC DEP CON
125.05 350.2

**TOP ALTITUDE:
3000**



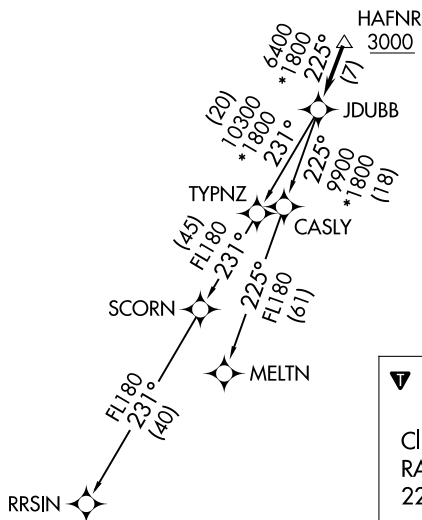
TAKEOFF MINIMUMS:

Rwys 17, 35: Standard

- NOTE: RNAV 1.
- NOTE: RADAR required.
- NOTE: DME/DME/IRU or GPS required.
- NOTE: Turbo-jets only.
- NOTE: Takeoff Rwy 35 requires a climb to 1200 on heading 353° before proceeding on the ATC assigned heading for obstacle avoidance.

NE-3, 11 JUN 2026 to 09 JUL 2026

NE-3, 11 JUN 2026 to 09 JUL 2026



NOTE: Chart not to scale.

DEPARTURE ROUTE DESCRIPTION

Climb on heading assigned by ATC, expect RADAR vectors to HAFNR, then on track 225° to JDUBB, thence. . . .

. . . . on assigned transition, maintain 3000, expect clearance to filed altitude within ten (10) minutes after departure.

MELTN TRANSITION (JDUBB4.MELTN)
RRSIN TRANSITION (JDUBB4.RRSIN)